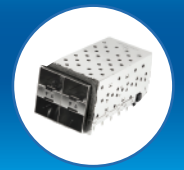


ExpressPort™ SFP+ 2xN



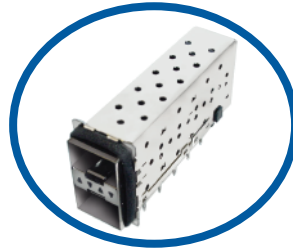
UE86-D2527-20321

Amphenol's ExpressPort™ SFP+ 2xN Combo provides data transfer speeds of up to 25 Gbps per port. ExpressPort™ SFP+ 2xN Combos consist of an integrated stacked connector system and a cage with compliant press-fit pins.

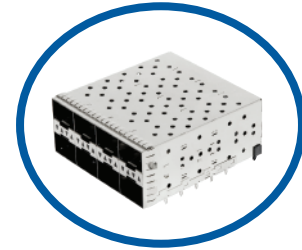
Amphenol's unique ExpressPort™ SFP+ cage construction features EMI shielding available in the form of an elastomeric gasket or metal spring fingers. These cages also eliminate ventilation holes near the front of the cage to prevent potential catch points for the mating module EMI springs.



UE86-K8427-20321



UE86-D1427-10321



UE86-D4627-10321

Specification Highlights

The interconnect system is comprised of a 2-row stacked, 20-position, 0.8 mm pitch SFP+ connector and cage assembly as one unit with all press-fit construction.

General Characteristics

- RoHS Compliant
- Press-fit Cage and Connector Combo for min 1.57 +/- 10% mm (0.0625") PCB Thickness
- Industry Standard EIA-364

Mechanical Characteristics

- Card Entry Slot Accepts 1.0 mm Thick Integrated Circuit Cards
- Durability: 250 Mating Cycles min

Electrical Characteristics

- Hot Swappable
- Operating Voltage: 3.3 V
- Operating Current: 0.5 A
- Differential Impedance: 100 Ω +/- 10 Ω
- DWV: 300 V AC
- Insulation Resistance: 1000 M Ω min
- Contact Resistance: 70 m Ω max

Packaging

- Tray Packaging: Cage and Connector Assembly
- Bulk Packaging: Dust Cover

Materials

- Cage
 - o Base Material: Copper Alloy
 - o Plating: Nickel or Tin
 - o Light Pipe: Optical Grade Polycarbonate
 - o Dust Cover: Thermoplastic
- Connector
 - o Contact Base Material: Copper Alloy
 - o Contact Plating: Gold on Mating Area, Matte Tin on Termination
 - o Housings: Glass Reinforced, Lead-Free Solder Reflow Process Compatible Thermoplastic, UL94V-0 Rated

Temperature Rating

- Operating Temperature: -55°C to +85°C
- Storage Temperature: -55°C to +105°C

Configurations (Rows x Ports per Row)

- | | |
|-------|-------|
| • 2x1 | • 2x2 |
| • 2x4 | • 2x5 |
| • 2x6 | • 2x8 |

Options

- Dust Cover
- Light Pipe
 - o 4 Light Pipes per 2x1
 - o 2 Inner Light Pipes per 2x1
 - o 2 Outer Light Pipes per 2x1
- EMI Shielding
 - o Metal Spring Fingers
 - o Conductive Elastomeric Gasket



UE86-K2427-10321



UE86-K442C-20321

Ordering Information

ExpressPort™ SFP+ 2xN Combo (Cage / Connector)

UE86 - X X X X X - X X X X 1

UE86 SERIES DESIGNATION
UE86 - RoHS SFP+ Cage and Connector (Lead Free)

STYLE
B - 2xN, No Light Pipe
D - 2xN, Small Light Pipe Openings
K - 2xN, Large Light Pipe Openings
L - 2xN, Low Profile Combo (No Light Pipe)

NUMBER OF PORTS IN ROW
1 - 2x1
2 - 2x2
4 - 2x4
5 - 2x5
6 - 2x6
8 - 2x8

CHASSIS GROUNDING
4 - Elastomeric Gasket
5 - Elastomeric Gasket, Bottom Mylar Tape
6 - Metal Spring Fingers

MOUNTING TYPE: CONNECTOR
2 - Standard Press Fit Pins (12 Gbps)
5 - Small Press Fit Pins for High Speed Termination (16 Gbps)

PACKAGING
1 - Tray Packaging (Stacked)

PLATING OPTION: CAGE
1 - Bright Tin
2 - Nickel
3 - Matte Tin

PLATING OPTION: CONNECTOR
X - Various Options Available
Consult Sales or Website for Details

DUST COVER OPTION
0 - Without Dust Cover
D - With Dust Cover (Shipped Loose)

LIGHT PIPE OPTION
0 - No Light Pipe
1 - 4 Light Pipes per 2x1
2 - 2 Inner Light Pipes per 2x1
3 - 2 Outer Light Pipes per 2x1

MOUNTING TYPE: CAGE
7 - Standard 2xN Cage
C - Enhanced EMI Cage