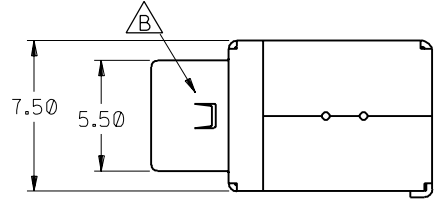


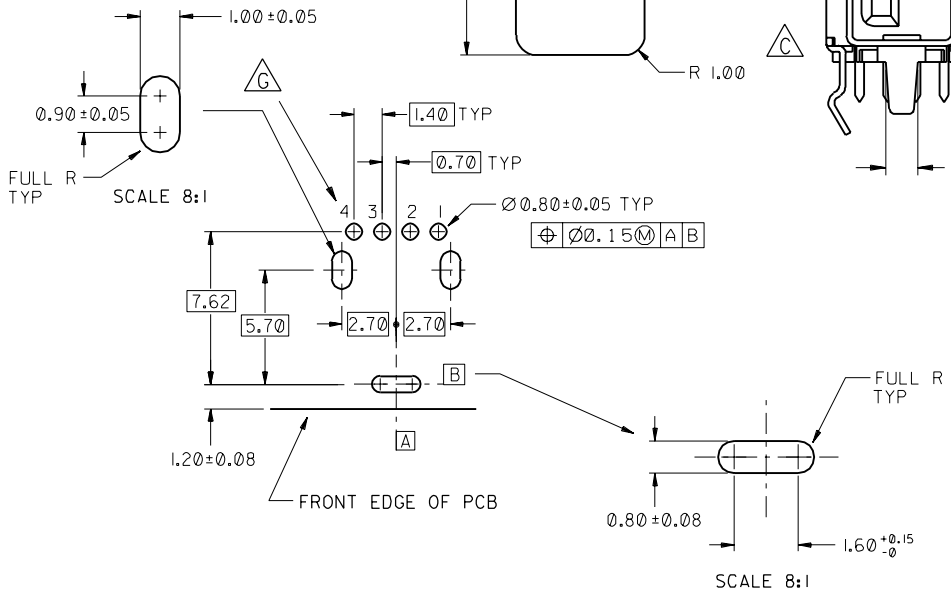
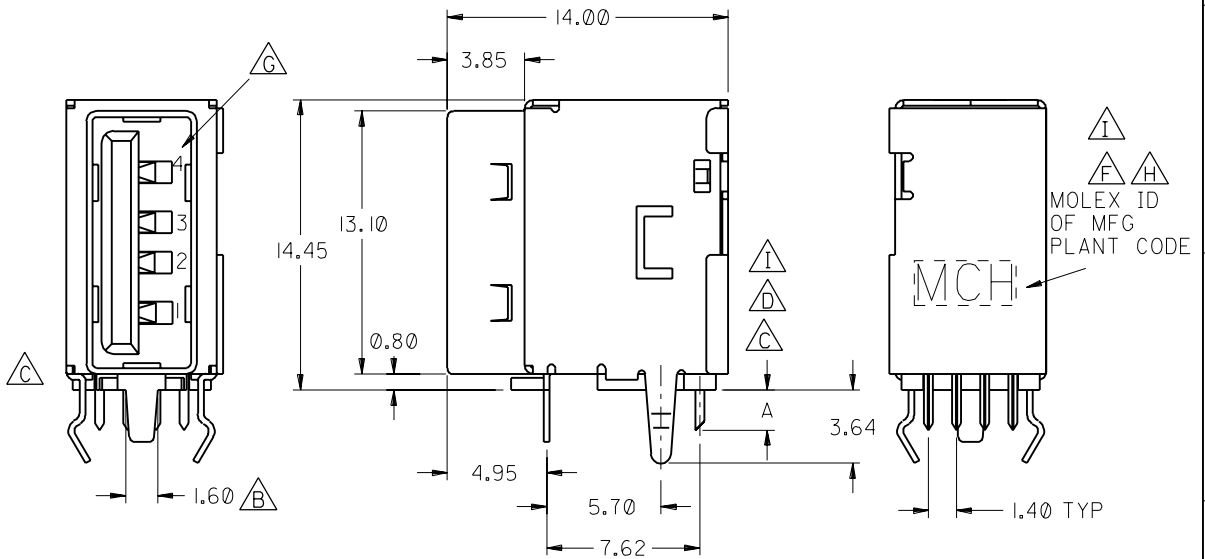
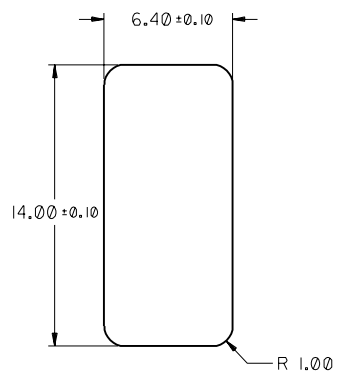
CAD FILE : S89485
 SIMILAR ITEM
 EDP NO.
 ENG. NO SDA-89485-000
 DO NOT SCALE DRAWING

- NOTES :
- MATERIAL :
 - HOUSING : HIGH TEMPERATURE NYLON , GLASS FIBRE FILLED, UL94-V0 , COLOR: BLACK
 - TERMINAL : PHOSPHOR BRONZE
 - METAL SHELL : DEEP DRAWN STEEL
 - PLATING :
 - TERMINAL :
 - CONTACT AREA : (a) GOLD FLASH.
 - (b) GOLD (Au), THICKNESS = 30 MICROINCH MINIMUM.
 - SOLDER TAIL : TIN-LEAD (Sn-Pb) ALLOY.
 - THICKNESS= 75 MICROINCH MINIMUM .
 - UNDER PLATE : NICKEL (Ni), THICKNESS= 50 MICROINCH MINIMUM.
 - METAL SHELL :
 - TIN (Sn) ALLOY , THICKNESS= 100 MICROINCH MINIMUM.
 - UNDER PLATE : NICKEL (Ni), THICKNESS= 50 MICROINCH MINIMUM.
 - RECOMMENDED PCB THICKNESS : 1.60±0.05 mm
 - PRODUCT SPECIFICATION : REFER TO PS-89485
 - TRAY PACKAGING SPECIFICATION REFER TO : PK-89485-002
 TUBE PACKAGING SPECIFICATION REFER TO : PK-89485-001
 TUBE PACKAGING P/N, PLEASE REFER TO SHEET 2,3

| DIMENSION "A" | P/N FOR TRAY PACKING | |
|--|----------------------|--|
| 2.00 ^{+0.35} _{-0.15} | 89485-0000 | GOLD FLASH PLATING ON CONTACT AREA |
| | 89485-0001 | 30 MICRO INCH GOLD PLATING ON CONTACT AREA |
| 2.50 ^{+0.35} _{-0.10} | 89485-0002 | GOLD FLASH PLATING ON CONTACT AREA |
| | 89485-0003 | 30 MICRO INCH GOLD PLATING ON CONTACT AREA |



Recommended Panel Opening



| | | | | | | | |
|---------------------------|----------------------------|-----------|---------|--------|---------------------------|-----------|---|
| L | ADD THE PK NUMBER | 1200-0068 | GRACE | 010216 | MATERIAL : | SEE NOTE | MOLEX TAIWAN LTD. SHEET 1 OF 3 |
| K | CORRECT HSG MATERIAL | 1200-0037 | Titan | 000815 | FINISH : | SEE NOTE | |
| J | Tooling Completed | 100-0211 | Vincent | 000609 | WIRE RANGE : | N/A | GENERAL TOLERANCES ANGLE : ± 3° DIM : ± .25/.010 |
| I | Add Long Tail Option | 100-020 | Vincent | 000328 | INS. RANGE : | N/A | |
| H | CHANGE LOGO | 100-0149 | Vincent | 000127 | DRAWN BY 961007 R.YANG | CHK'D BY | ENG. NO.: SDA-89485-000• REV L |
| G | CHANGE CONTACT NUMBERS | 199-045 | Vincent | 980819 | APPR'D BY | SCALE 4:1 | |
| F | PER ECN T99-022 | 199-022 | Vincent | 980730 | TITLE : | | SINGLE PORT UP-RIGHT USB CONNECTOR |
| E | Change Housing of Material | 198-320 | Vincent | 980422 | | | |
| D | RELEASE TO MANUFACTURE | 198-279 | Vincent | 980313 | | | |
| LTR | REVISION RECORD | ECN | DR | DATE | | | |
| REVISE ONLY ON CAD SYSTEM | | | | | | | |