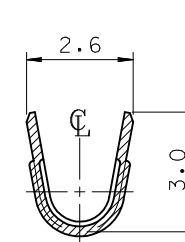
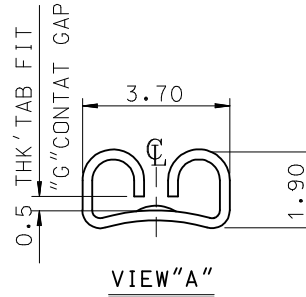
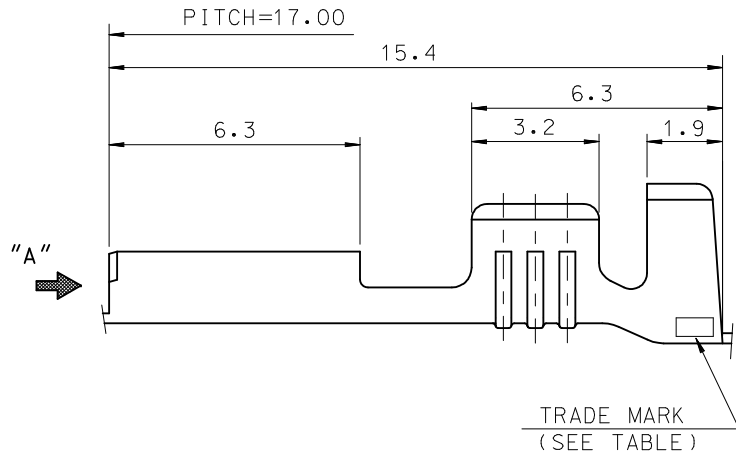
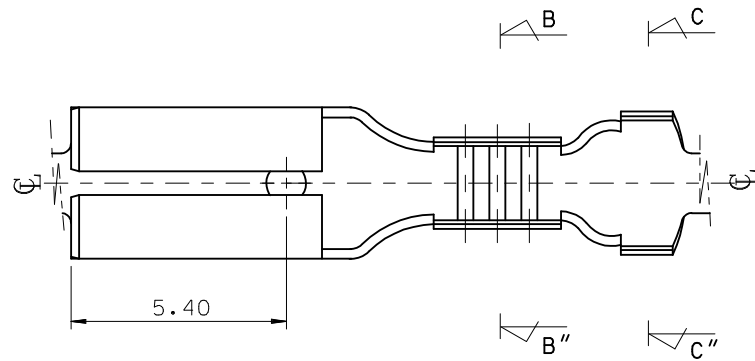


NOTES.

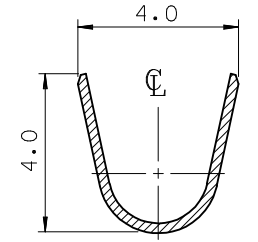
- MATERIAL : BRASS
- FINISHES : SEE TABLE 1  
0.8~1.8 μm TIN PLATING  
OVERALL 0.3~0.8μm COPPER PLATING
- PRODUCT SPECIFICATIONS : PS-35544-001  
PS-35702-001  
PS-68428-001
- MATES WITH : 0.5t TAB
- APPLICABLE WIRE RANGE : AWG #20~#16

MATERIAL NO.	PART NO.	FINISH	TRADE MARK
357110700	35711-0700	UNPLATED	MK2
357110710	35711-0710	⊙ PRE-TIN PLATED	
357110701	35711-0701	UNPLATED	L MK1
357110711	35711-0711	⊙ PRE-TIN PLATED	

<TABLE 1>



SECTION B-B



SECTION C-C

PART NO.	"G" CONTACT GAP
35711-0700	0.3 - 0.4
35711-0710	0.3 - 0.4
35711-0701	0.42 - 0.47
35711-0711	0.42 - 0.47

<TABLE 2>

REVISED EC NO: KOR2009-0111 DRWN: JHPARK01 2009/01/30 CHKD: WY. YANG 2009/01/30 APPR: YUNSIKKIM 2009/01/30	QUALITY SYMBOLS ▽=0 □=0	GENERAL TOLERANCES (UNLESS SPECIFIED)		DIMENSION STYLE MM ONLY		SCALE 8:1	DESIGN UNITS METRIC	THIRD ANGLE PROJECTION	
		mm	INCH	DRAWN BY	DATE	TITLE			
		4 PLACES ± ---	± ---	WY. YANG	1993/04/15	.110 SLIP-ON RECEPTACLE			
		3 PLACES ± ---	± ---	CHECKED BY	DATE				
		2 PLACES ± ---	± ---	BK. CHOI	1993/04/15				
		1 PLACE ± 0.30	± ---	APPROVED BY	DATE				
		ANGULAR ± ---°		CW. LEE	1993/04/15				
		DRAFT WHERE APPLICABLE MUST REMAIN WITHIN DIMENSIONS		SEE TABLE		MOLEX INCORPORATED DOCUMENT NO. SD-35711-07*0		SHEET NO. 1 OF 01	
		THIS DRAWING CONTAINS INFORMATION THAT IS PROPRIETARY TO MOLEX INCORPORATED AND SHOULD NOT BE USED WITHOUT WRITTEN PERMISSION							