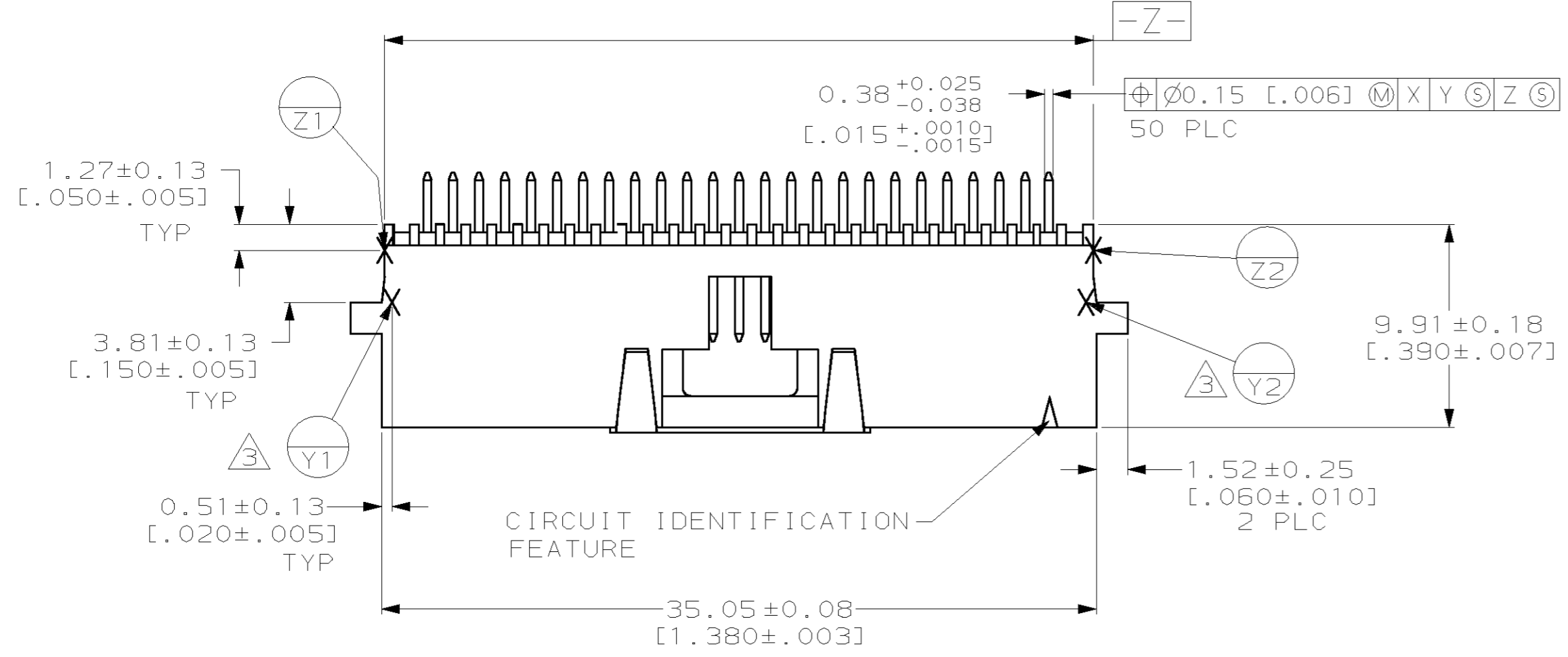
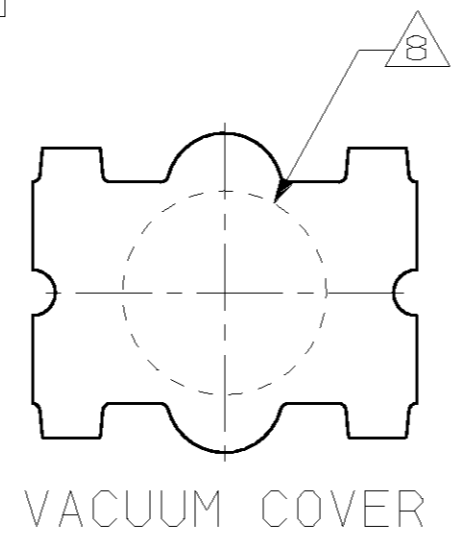
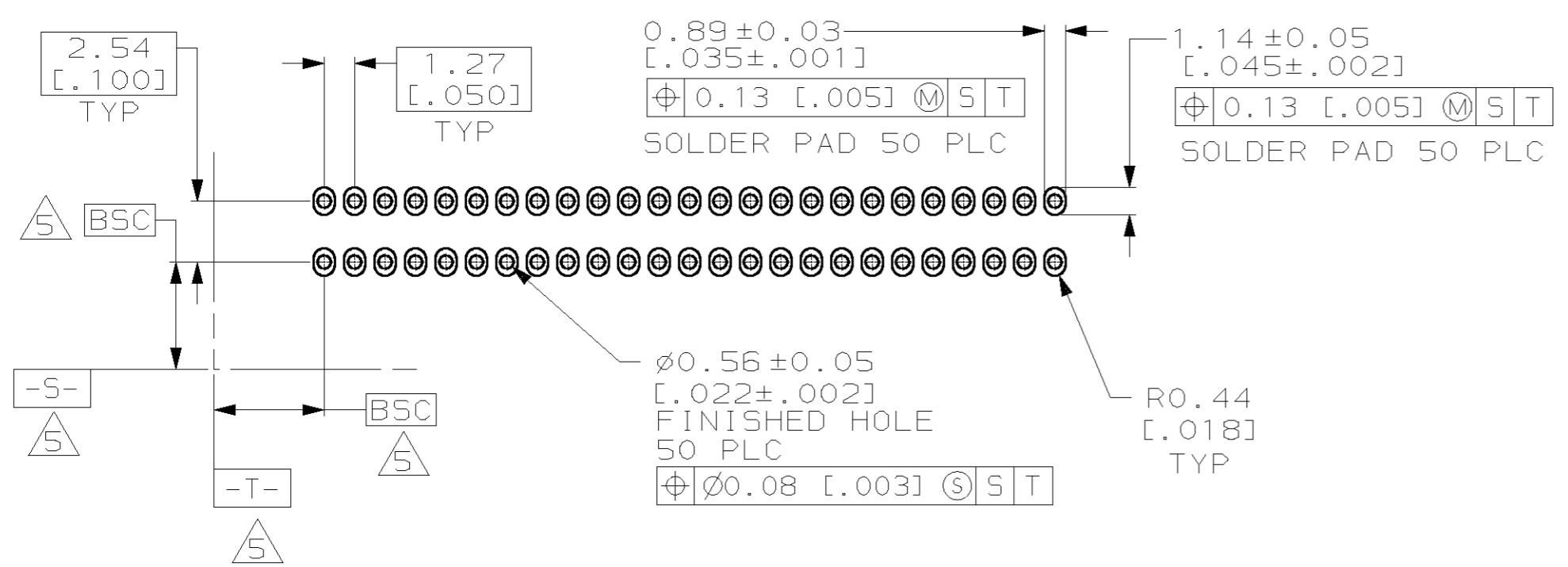
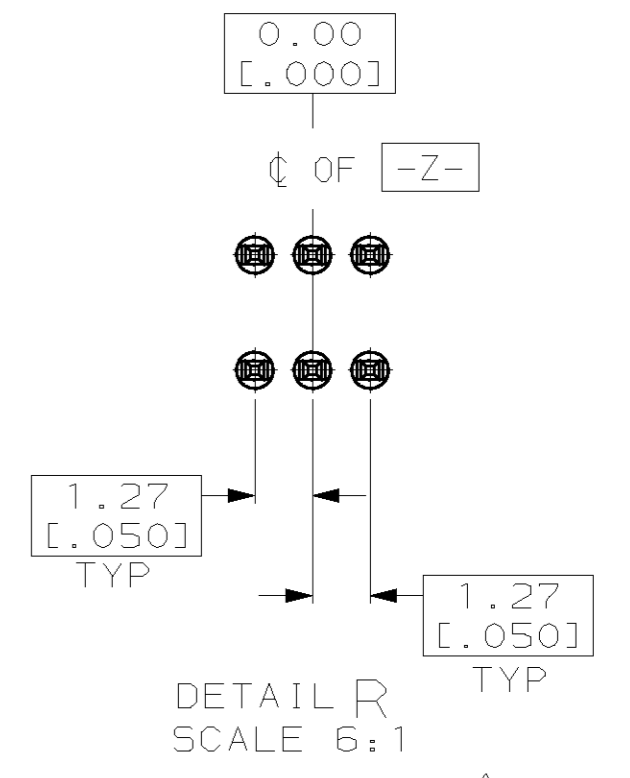
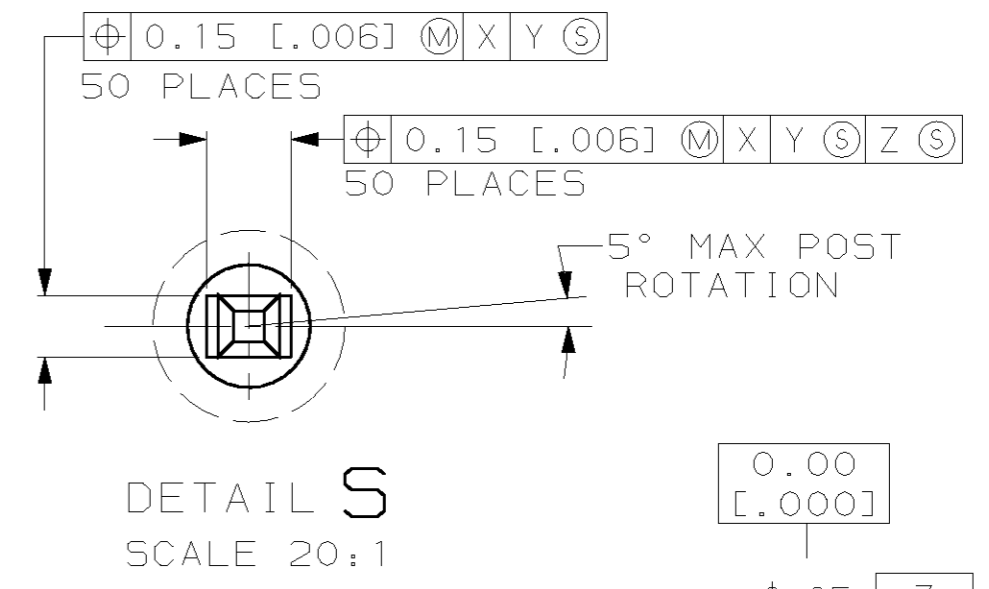
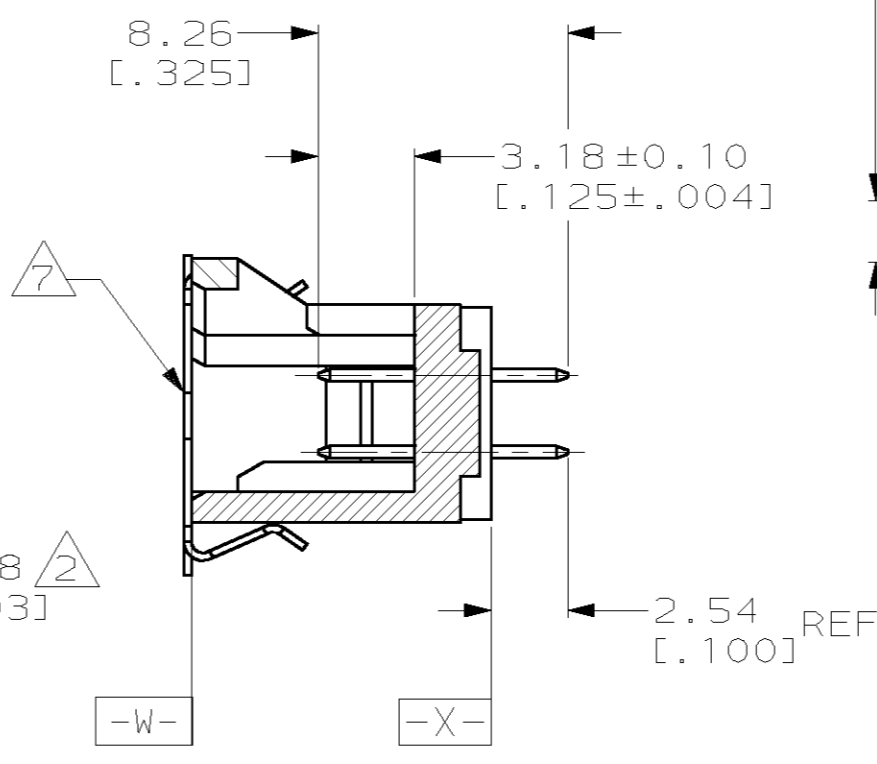
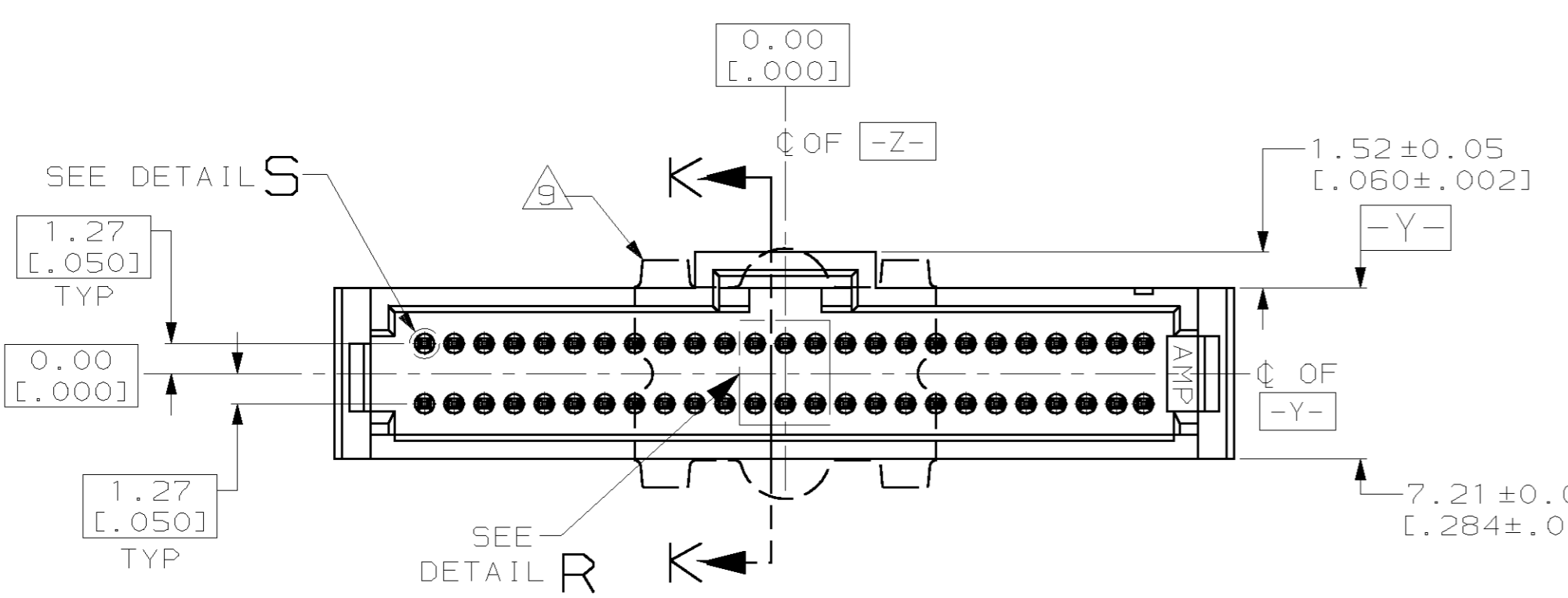


THIS DRAWING IS UNPUBLISHED. RELEASED FOR PUBLICATION
 (C) COPYRIGHT 19 BY AMP INCORPORATED. ALL RIGHTS RESERVED.

LOC		DIST		REVISIONS			
P	LTR	DESCRIPTION	DATE	DWN	APVD		
B		REV PER 063C-0573-04	18OCT04	JR	DS		



- 1 CONTACT AREA PLATED WITH 0.000762 [.000030] MIN GOLD; SOLDER TAILS PLATED WITH 0.00381 [.000150] MIN TIN-LEAD, ALL OVER 0.00127 [.000050] MIN NICKEL.
- 2 DIMENSION APPLIES AT BASE OF SHROUD
- 3 ARE LOCATED THE SAME AS EXCEPT ON OPPOSITE SIDE OF HOUSING.
- 4 PACKAGED IN TAPE & REEL PER EIA-481 SPECIFICATIONS. SEE CHART FOR TAPE WIDTHS.
- 5 DATUMS AND BASIC DIMENSIONS ESTABLISHED BY CUSTOMER.
- 6 HOUSING: THERMOPLASTIC, COLOR-BLACK. POST: COPPER ALLOY. VACUUM COVER: ALUMINUM.
- 7 VACUUM COVER DESIGNED FOR 4.0 [.160] DIA. NOZZLE. VACUUM COVER TO BE REMOVED AFTER SOLDERING.
- 8 6.75 [.265] MIN TARGET AREA FOR VACUUM PICK-UP.
- 9 VACUUM COVER SHOWN IN PHANTOM LINE.
- 10 CONTACT AREA PLATED WITH 0.000762 [.000030] MIN GOLD; SOLDER TAILS PLATED WITH 0.00381 [.000150] MIN TIN, ALL OVER 0.00127 [.000050] MIN NICKEL.



THIS DRAWING IS A CONTROLLED DOCUMENT.		DWN	B. HAYMAKER	17JAN00	AMP Incorporated Harrisburg, PA 17105-3608	
DIMENSIONS: MMEINCH		CHK	J. MOSIER	17JAN00		
TOLERANCES UNLESS OTHERWISE SPECIFIED:		APVD	J. MOSIER	17JAN00		
0 PLC ± 1 PLC ± 2 PLC ± 3 PLC ±0.13(.005) 4 PLC ± ANGLES ±		PRODUCT SPEC	108-1093			
MATERIAL		APPLICATION SPEC	114-25031		NAME	HEADER ASSEMBLY, VERTICAL, DOUBLE ROW, System 50, AMPMODU™
FINISH		WEIGHT	-		SIZE	A2
SEE NOTES		CUSTOMER DRAWING	SCALE	10:1	CAGE CODE	00779
			SHEET	1 OF 1	DRAWING NO	147380
			REV	B	RESTRICTED TO	-