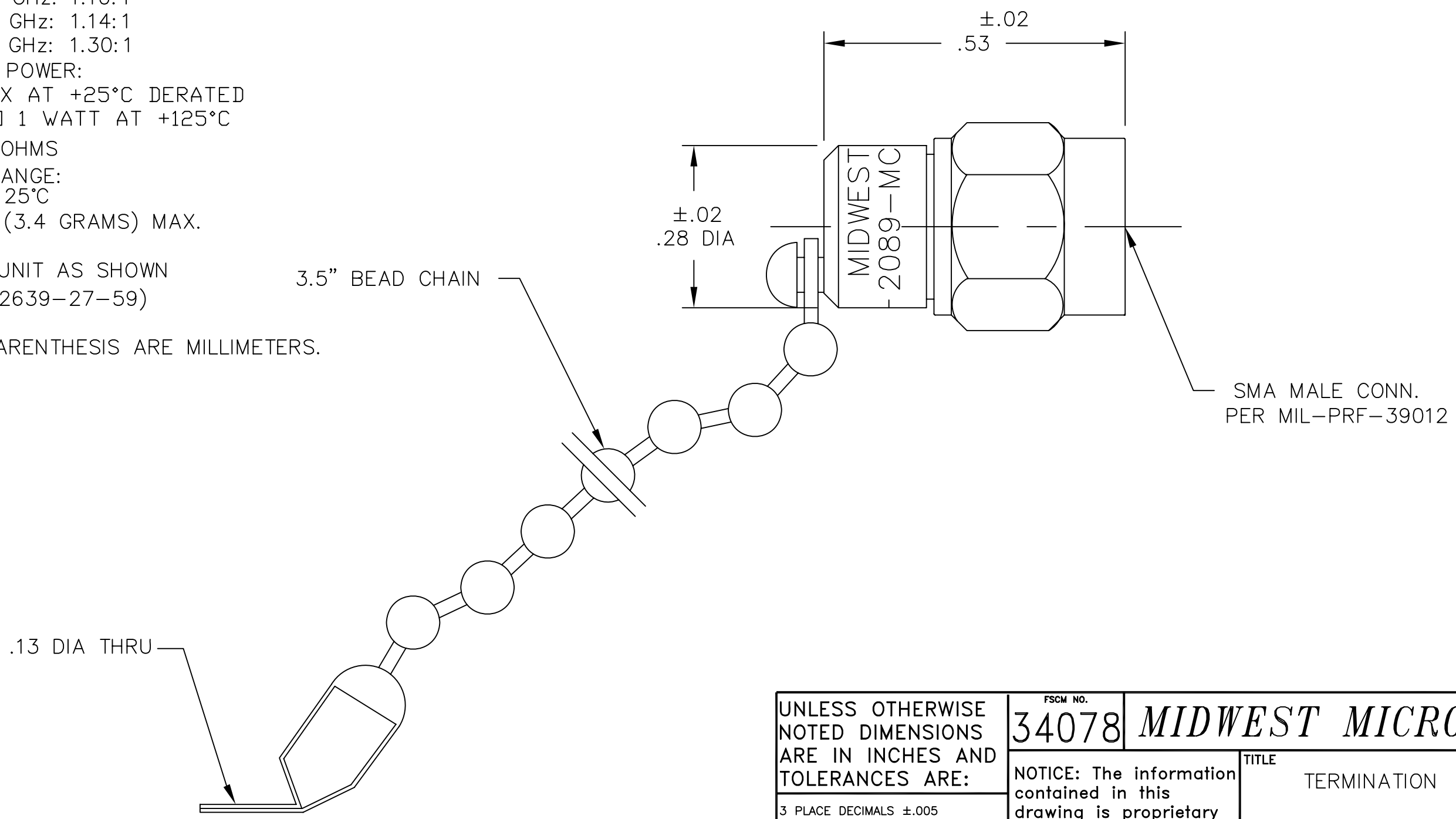


- NOTES:
- 1.0 ELECTRICAL SPECIFICATIONS
    - 1.1 FREQUENCY RANGE: DC to 26.5 GHz
    - 1.2 VSWR (MAX):
      - DC to 4.0 GHz: 1.05:1
      - 8.0 to 12.0 GHz: 1.10:1
      - 12.0 to 18.0 GHz: 1.14:1
      - 18.0 to 26.5 GHz: 1.30:1
    - 1.3 MAXIMUM INPUT POWER:
      - 2 WATTS MAX AT +25°C DERATED
      - LINEARLY TO 1 WATT AT +125°C
    - 1.4 IMPEDANCE: 50 OHMS
    - 1.5 TEMPERATURE RANGE:
      - 65°C to +125°C
    - 1.6 WEIGHT: .12 Oz. (3.4 GRAMS) MAX.
  - 2.0 MARKING: MARK UNIT AS SHOWN  
(REF.: INK-02639-27-59)
  - 3.0 DIMENSIONS IN PARENTHESIS ARE MILLIMETERS.



DATE	12/20/06
DESCRIPTION	RELEASED
REV.	-

UNLESS OTHERWISE NOTED DIMENSIONS ARE IN INCHES AND TOLERANCES ARE:	FSCM NO.		34078 <b>MIDWEST MICROWAVE</b>	
	NOTICE: The information contained in this drawing is proprietary and must not be used without the permission of Midwest Microwave		TITLE TERMINATION	
3 PLACE DECIMALS ±.005	DRAWN/DATE S.ORLOV 12/20/06		ENG./DATE G.KOZAK 12/20/06	
2 PLACE DECIMALS ±.02	CHECKED/DATE		APPROVED/DATE	
FRACTIONS ±1/64	DRAWING NUMBER TRM-2089-MC-SMA-02			
PARALLELITY: T.I.R. _____	SCALE: 5=1		SHEET 1 of 1	
FLATNESS: T.I.R. _____				
CONCENTRICITY: T.I.R. _____				
ANGLES AND PERPENDICULARITY: ±1'				