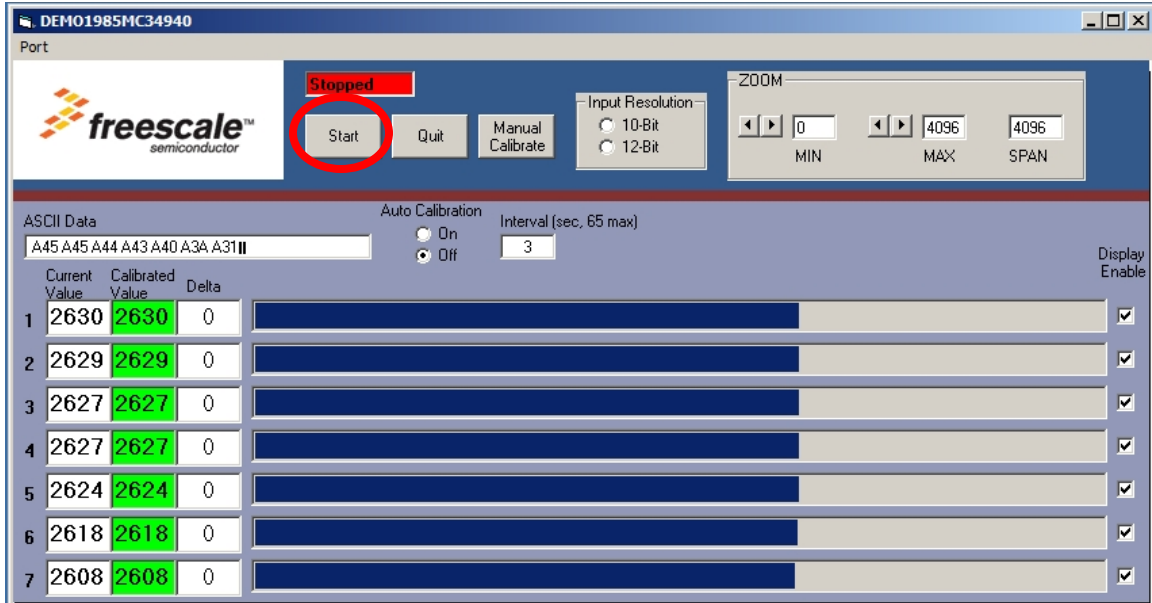




4) The system will record the calibrated values and can run by clicking on the “Start” button.



#### Additional Information

As described on page 6 of the MC34940 datasheet, the part is configurable to operate at three different frequencies (60kHz, 120kHz and 240kHz). The DEMO1985MC34940E evaluation board includes a jumper (JP2) that allows you to evaluate the part at 120kHz (default) or at 240kHz.

Jumper setting on JP2	Frequency
Open	120 kHz
Closed	240 kHz

