



Is Now Part of



**ON Semiconductor®**

To learn more about ON Semiconductor, please visit our website at  
[www.onsemi.com](http://www.onsemi.com)

ON Semiconductor and the ON Semiconductor logo are trademarks of Semiconductor Components Industries, LLC dba ON Semiconductor or its subsidiaries in the United States and/or other countries. ON Semiconductor owns the rights to a number of patents, trademarks, copyrights, trade secrets, and other intellectual property. A listing of ON Semiconductor's product/patent coverage may be accessed at [www.onsemi.com/site/pdf/Patent-Marking.pdf](http://www.onsemi.com/site/pdf/Patent-Marking.pdf). ON Semiconductor reserves the right to make changes without further notice to any products herein. ON Semiconductor makes no warranty, representation or guarantee regarding the suitability of its products for any particular purpose, nor does ON Semiconductor assume any liability arising out of the application or use of any product or circuit, and specifically disclaims any and all liability, including without limitation special, consequential or incidental damages. Buyer is responsible for its products and applications using ON Semiconductor products, including compliance with all laws, regulations and safety requirements or standards, regardless of any support or applications information provided by ON Semiconductor. "Typical" parameters which may be provided in ON Semiconductor data sheets and/or specifications can and do vary in different applications and actual performance may vary over time. All operating parameters, including "Typicals" must be validated for each customer application by customer's technical experts. ON Semiconductor does not convey any license under its patent rights nor the rights of others. ON Semiconductor products are not designed, intended, or authorized for use as a critical component in life support systems or any FDA Class 3 medical devices or medical devices with a same or similar classification in a foreign jurisdiction or any devices intended for implantation in the human body. Should Buyer purchase or use ON Semiconductor products for any such unintended or unauthorized application, Buyer shall indemnify and hold ON Semiconductor and its officers, employees, subsidiaries, affiliates, and distributors harmless against all claims, costs, damages, and expenses, and reasonable attorney fees arising out of, directly or indirectly, any claim of personal injury or death associated with such unintended or unauthorized use, even if such claim alleges that ON Semiconductor was negligent regarding the design or manufacture of the part. ON Semiconductor is an Equal Opportunity/Affirmative Action Employer. This literature is subject to all applicable copyright laws and is not for resale in any manner.



April 2016

# HUFA76413DK8T\_F085

## N-Channel Logic Level UltraFET<sup>®</sup> Power MOSFET 60V, 4.8A, 56mΩ

### General Description

These N-Channel power MOSFETs are manufactured using the innovative UltraFET<sup>®</sup> process. This advanced process technology achieves the lowest possible onresistance per silicon area, resulting in outstanding performance. This device is capable of withstanding high energy

in the avalanche mode and the diode exhibits very low reverse recovery time and stored charge. It was designed for use in applications where power efficiency is important, such as switching regulators, switching convertors, motor drivers, relay drivers, low-voltage bus switches, and power management in portable and battery-operated products.

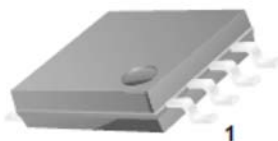


### Features

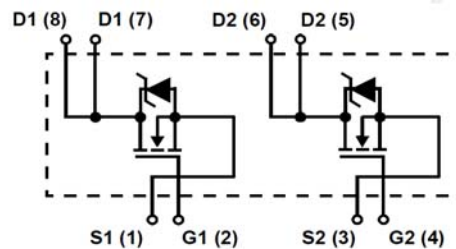
- 150°C Maximum Junction Temperature
- UIS Capability (Single Pulse and Repetitive Pulse)
- Ultra-Low On-Resistance  $r_{DS(ON)} = 0.049\Omega$ ,  $V_{GS} = 10V$
- Ultra-Low On-Resistance  $r_{DS(ON)} = 0.056\Omega$ ,  $V_{GS} = 5V$
- Qualified to AEC Q101
- RoHS Compliant

### Applications

- Motor and Load Control
- Powertrain Management



SO-8



### MOSFET Maximum Ratings $T_A = 25^\circ\text{C}$ unless otherwise noted

Symbol	Parameter	Ratings	Units
$V_{DSS}$	Drain to Source Voltage	60	V
$V_{GS}$	Gate to Source Voltage	$\pm 16$	V
$I_D$	Drain Current -Continuous ( $T_C = 25^\circ\text{C}$ , $V_{GS} = 10V$ )	5.1	A
	-Continuous ( $T_C = 25^\circ\text{C}$ , $V_{GS} = 5V$ )	4.8	
	-Continuous ( $T_C = 125^\circ\text{C}$ , $V_{GS} = 5V$ , $R_{\theta JA} = 228^\circ\text{C/W}$ )	1	
	-Pulsed	Figure 4	
$E_{AS}$	Single Pulse Avalanche Energy (Note 1)	260	mJ
$P_D$	Power Dissipation	2.5	W
	Derate Above $25^\circ\text{C}$	0.02	W/ $^\circ\text{C}$
$T_J, T_{STG}$	Operating and Storage Temperature	-55 to +150	$^\circ\text{C}$

### Thermal Characteristics

$R_{\theta JA}$	Thermal Resistance Junction to Ambient SO-8 (Note 2)	50	$^\circ\text{C/W}$
	Thermal Resistance Junction to Ambient SO-8 (Note 3)	191	
	Thermal Resistance Junction to Ambient SO-8 (Note 4)	228	

### Package Marking and Ordering Information

Device Marking	Device	Package	Reel Size	Tape Width	Quantity
76413DK8	HUFA76413DK8T_F085	SO-8	330mm	12mm	2500 units

#### Notes:

- 1: Starting  $T_J = 25^\circ\text{C}$ ,  $L = 20\text{mH}$ ,  $I_{AS} = 5.1\text{A}$
- 2:  $R_{\theta JA}$  is  $50^\circ\text{C/W}$  when mounted on a  $0.5\text{ in}^2$  copper pad on FR-4 at 1 second.
- 3:  $R_{\theta JA}$  is  $191^\circ\text{C/W}$  when mounted on a  $0.027\text{ in}^2$  copper pad on FR-4 at 1000 seconds.
- 4:  $R_{\theta JA}$  is  $228^\circ\text{C/W}$  when mounted on a  $0.006\text{ in}^2$  copper pad on FR-4 at 1000 seconds.
- 5: A suffix as "...F085P" has been temporarily introduced in order to manage a double source strategy as Fairchild has officially announced in Aug 2014.

**Electrical Characteristics**  $T_J = 25^\circ\text{C}$  unless otherwise noted

Symbol	Parameter	Test Conditions	Min	Typ	Max	Units
--------	-----------	-----------------	-----	-----	-----	-------

**Off Characteristics**

$BV_{DSS}$	Drain to Source Breakdown Voltage	$I_D = 250 \mu\text{A}$ , $V_{GS} = 0 \text{ V}$	60	-	-	V
$I_{DSS}$	Zero Gate Voltage Drain Current	$V_{DS} = 55 \text{ V}$ , $V_{GS} = 0 \text{ V}$	-	-	1	$\mu\text{A}$
		$T_A = 150^\circ\text{C}$	-	-	250	
$I_{GSS}$	Gate to Source Leakage Current	$V_{GS} = \pm 16 \text{ V}$	-	-	$\pm 100$	nA

**On Characteristics**

$V_{GS(th)}$	Gate to Source Threshold Voltage	$V_{GS} = V_{DS}$ , $I_D = 250 \mu\text{A}$	1	-	3	V
$r_{DS(on)}$	Static Drain to Source On Resistance	$I_D = 5.1 \text{ A}$ , $V_{GS} = 10 \text{ V}$	-	0.041	0.049	$\Omega$
		$I_D = 4.8 \text{ A}$ , $V_{GS} = 5 \text{ V}$	-	0.048	0.056	
		$I_D = 4.8 \text{ A}$ , $V_{GS} = 5 \text{ V}$ , $T_A = 150^\circ\text{C}$	-	0.091	0.106	

**Dynamic Characteristics**

$C_{iss}$	Input Capacitance	$V_{DS} = 25 \text{ V}$ , $V_{GS} = 0 \text{ V}$ , $f = 1 \text{ MHz}$	-	620	-	pF	
$C_{oss}$	Output Capacitance		-	180	-	pF	
$C_{rss}$	Reverse Transfer Capacitance		-	30	-	pF	
$Q_{g(TOT)}$	Total Gate Charge at 10V	$V_{GS} = 0$ to 10 V	$V_{DD} = 30 \text{ V}$ , $I_D = 4.8 \text{ A}$ , $I_g = 1.0 \text{ mA}$	-	18	23	nC
$Q_{g(5)}$	Total Gate Charge at 5V	$V_{GS} = 0$ to 5 V		-	10	13	nC
$Q_{g(TH)}$	Threshold Gate Charge	$V_{GS} = 0$ to 1 V		-	0.6	0.8	nC
$Q_{gs}$	Gate to Source Charge			-	1.8	-	nC
$Q_{gd}$	Gate to Drain "Miller" Charge			-	5	-	nC

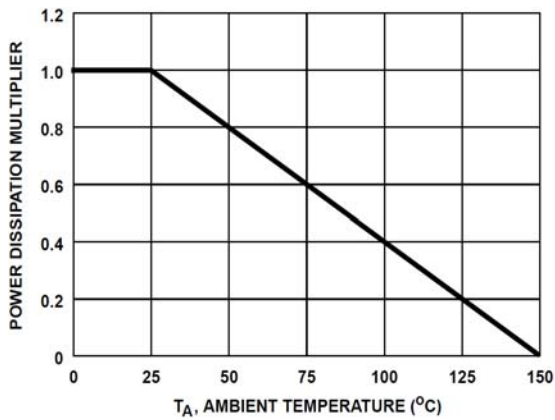
**Switching Characteristics ( $V_{GS}=5\text{V}$ )**

$t_{on}$	Turn-On Time	$V_{DD} = 30 \text{ V}$ , $I_D = 1.0 \text{ A}$ , $V_{GS} = 5 \text{ V}$ , $R_{GS} = 16 \Omega$	-	-	44	ns
$t_{d(on)}$	Turn-On Delay Time		-	10	-	ns
$t_r$	Rise Time		-	19	-	ns
$t_{d(off)}$	Turn-Off Delay Time		-	45	-	ns
$t_f$	Fall Time		-	27	-	ns
$t_{off}$	Turn-Off Time		-	-	108	ns

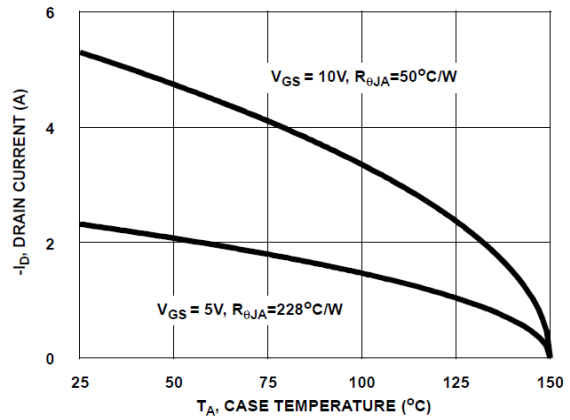
**Drain-Source Diode Characteristics**

$V_{SD}$	Source to Drain Diode Forward Voltage	$I_{SD} = 4.8 \text{ A}$	-	-	1.25	V
		$I_{SD} = 2.4 \text{ A}$	-	-	1.0	
$t_{rr}$	Reverse Recovery Time	$I_{SD} = 4.8 \text{ A}$ , $dI_{SD}/dt = 100 \text{ A}/\mu\text{s}$	-	-	43	ns
$Q_{rr}$	Reverse Recovery Charge		-	-	55	nC

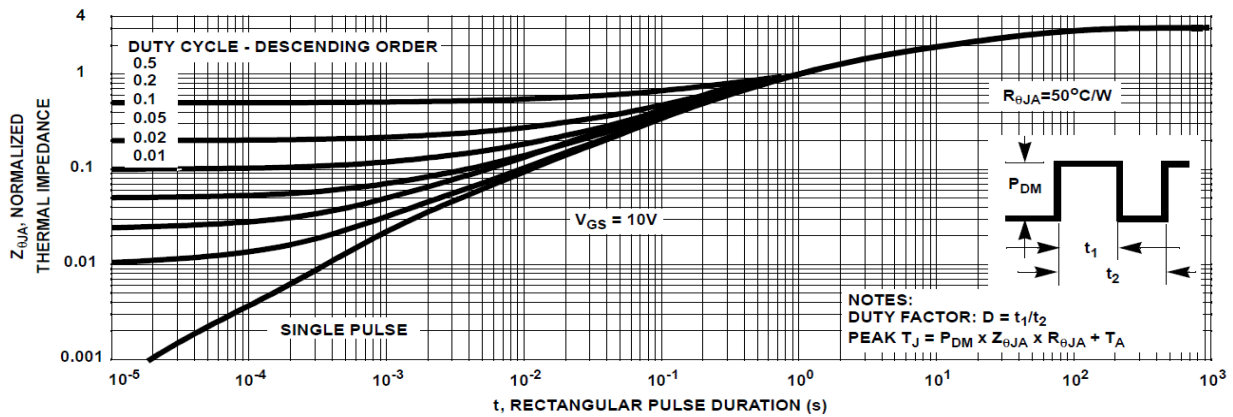
**Typical Characteristics**  $T_J = 25^\circ\text{C}$  unless otherwise noted



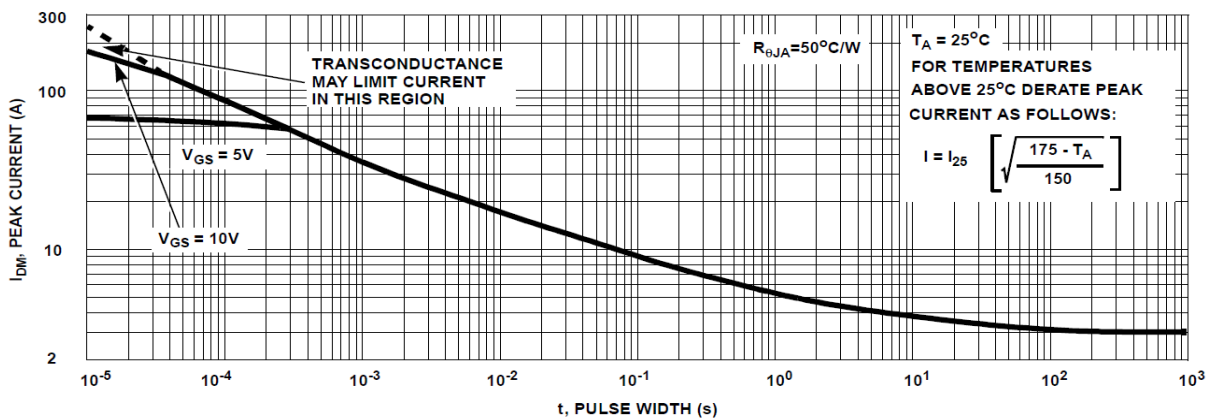
**Figure 1. Normalized Power Dissipation vs. Ambient Temperature**



**Figure 2. Maximum Continuous Drain Current vs. Case Temperature**

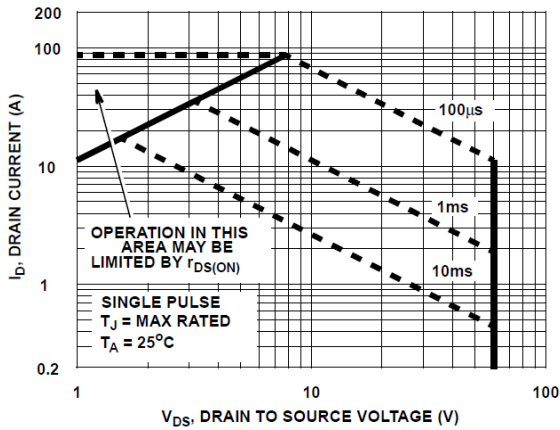


**Figure 3. Normalized Maximum Transient Thermal Impedance**

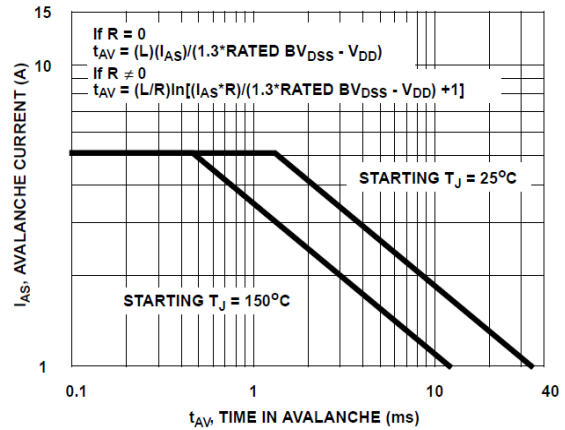


**Figure 4. Peak Current Capability**

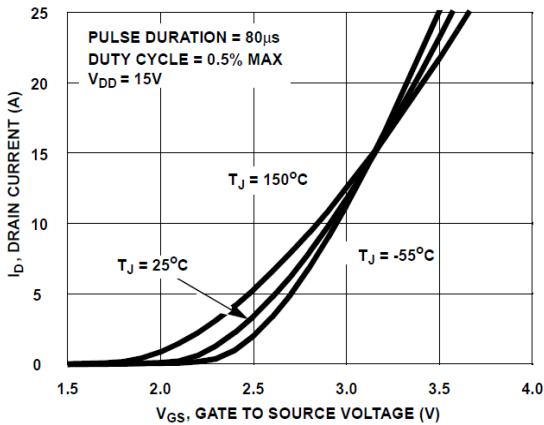
**Typical Characteristics**  $T_J = 25^\circ\text{C}$  unless otherwise noted



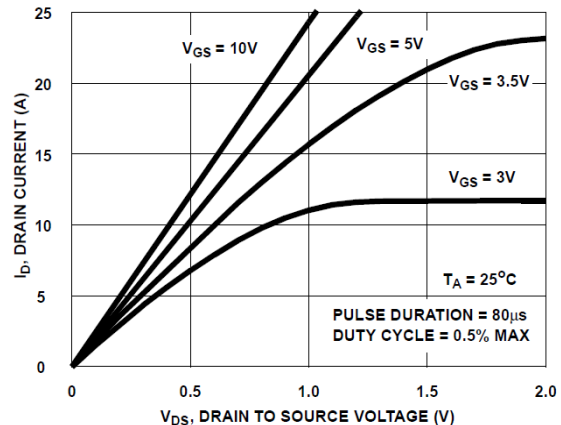
**Figure 5. Forward Bias Safe Operating Area**



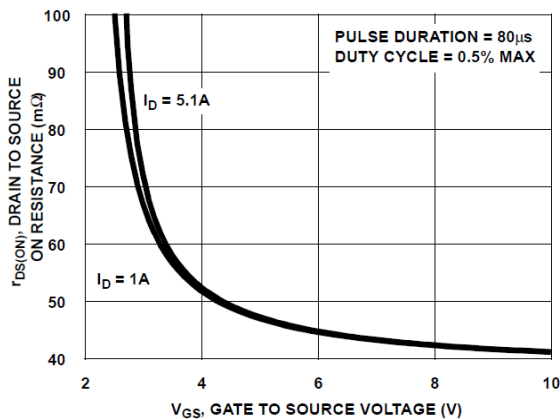
**Figure 6. Unclamped Inductive Switching Capability**



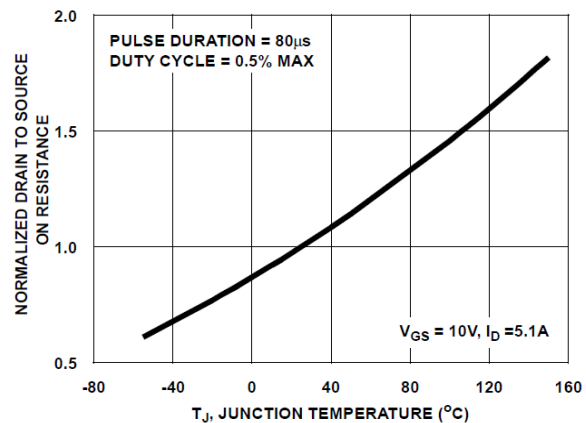
**Figure 7. Transfer Characteristics**



**Figure 8. Saturation Characteristics**

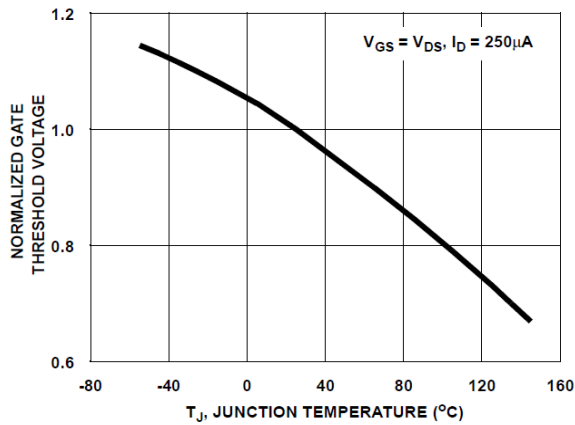


**Figure 9. Drain to Source On Resistance vs. Gate Voltage and Drain Current**

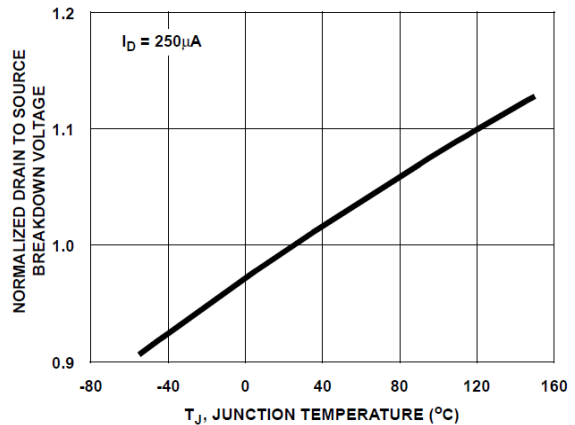


**Figure 10. Normalized Drain to Source On Resistance vs. Junction Temperature**

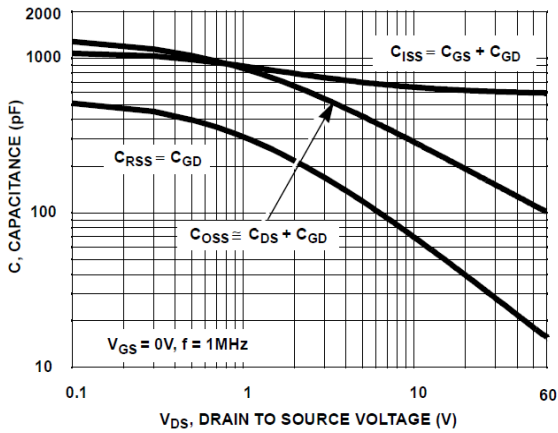
**Typical Characteristics**  $T_J = 25^\circ\text{C}$  unless otherwise noted



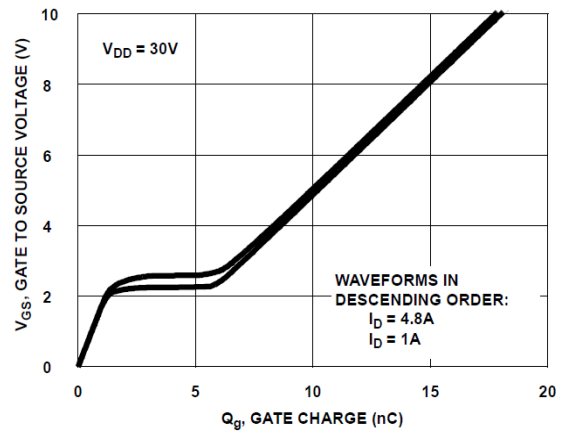
**Figure 11. Normalized Gate Threshold Voltage vs. Junction Temperature**



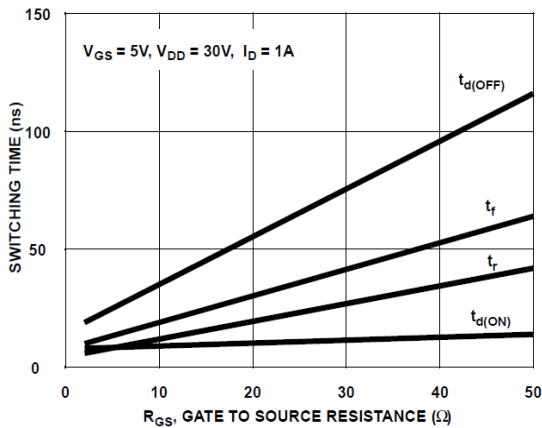
**Figure 12. Normalized Drain to Source Breakdown Voltage vs. Junction Temperature**



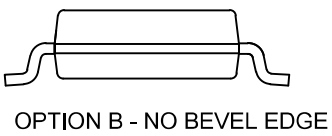
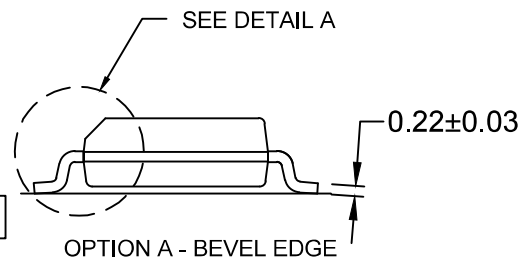
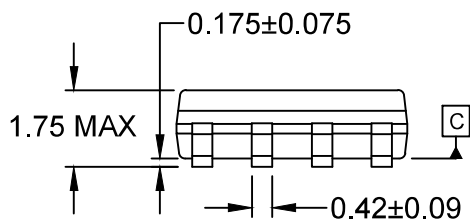
**Figure 13. Capacitance vs. Drain to Source Voltage**



**Figure 14. Gate Charge Waveforms for Constant Gate Currents**



**Figure 15. Switching Time vs Gate Resistance**



NOTES:

- A) THIS PACKAGE CONFORMS TO JEDEC MS-012, VARIATION AA.
- B) ALL DIMENSIONS ARE IN MILLIMETERS.
- C) DIMENSIONS DO NOT INCLUDE MOLD FLASH OR BURRS.
- D) LANDPATTERN STANDARD: SOIC127P600X175-8M
- E) DRAWING FILENAME: M08Arev16



ON Semiconductor and  are trademarks of Semiconductor Components Industries, LLC dba ON Semiconductor or its subsidiaries in the United States and/or other countries. ON Semiconductor owns the rights to a number of patents, trademarks, copyrights, trade secrets, and other intellectual property. A listing of ON Semiconductor's product/patent coverage may be accessed at [www.onsemi.com/site/pdf/Patent-Marking.pdf](http://www.onsemi.com/site/pdf/Patent-Marking.pdf). ON Semiconductor reserves the right to make changes without further notice to any products herein. ON Semiconductor makes no warranty, representation or guarantee regarding the suitability of its products for any particular purpose, nor does ON Semiconductor assume any liability arising out of the application or use of any product or circuit, and specifically disclaims any and all liability, including without limitation special, consequential or incidental damages. Buyer is responsible for its products and applications using ON Semiconductor products, including compliance with all laws, regulations and safety requirements or standards, regardless of any support or applications information provided by ON Semiconductor. "Typical" parameters which may be provided in ON Semiconductor data sheets and/or specifications can and do vary in different applications and actual performance may vary over time. All operating parameters, including "Typicals" must be validated for each customer application by customer's technical experts. ON Semiconductor does not convey any license under its patent rights nor the rights of others. ON Semiconductor products are not designed, intended, or authorized for use as a critical component in life support systems or any FDA Class 3 medical devices or medical devices with a same or similar classification in a foreign jurisdiction or any devices intended for implantation in the human body. Should Buyer purchase or use ON Semiconductor products for any such unintended or unauthorized application, Buyer shall indemnify and hold ON Semiconductor and its officers, employees, subsidiaries, affiliates, and distributors harmless against all claims, costs, damages, and expenses, and reasonable attorney fees arising out of, directly or indirectly, any claim of personal injury or death associated with such unintended or unauthorized use, even if such claim alleges that ON Semiconductor was negligent regarding the design or manufacture of the part. ON Semiconductor is an Equal Opportunity/Affirmative Action Employer. This literature is subject to all applicable copyright laws and is not for resale in any manner.

## PUBLICATION ORDERING INFORMATION

### LITERATURE FULFILLMENT:

Literature Distribution Center for ON Semiconductor  
19521 E. 32nd Pkwy, Aurora, Colorado 80011 USA  
**Phone:** 303-675-2175 or 800-344-3860 Toll Free USA/Canada  
**Fax:** 303-675-2176 or 800-344-3867 Toll Free USA/Canada  
**Email:** [orderlit@onsemi.com](mailto:orderlit@onsemi.com)

**N. American Technical Support:** 800-282-9855 Toll Free  
USA/Canada  
**Europe, Middle East and Africa Technical Support:**  
Phone: 421 33 790 2910  
**Japan Customer Focus Center**  
Phone: 81-3-5817-1050

**ON Semiconductor Website:** [www.onsemi.com](http://www.onsemi.com)  
**Order Literature:** <http://www.onsemi.com/orderlit>  
For additional information, please contact your local  
Sales Representative