

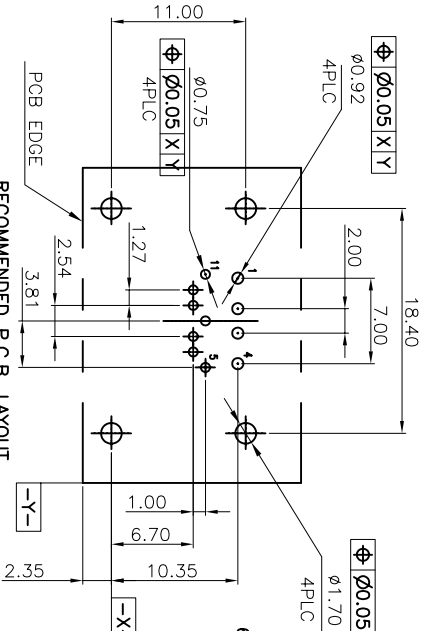
PIN DEFINITION

USB	ESATA
NAME	NAME
TYPE	TYPE
P1	P5
VBUS	GND
P2	P6
D-	A+
P3	P7
D+	A-
P4	GND
GND	P8
	GND
	P9
	B-
	P10
	B+
	P11
	GND

PIN DEFINITION

ESATA	USB
NAME	NAME
TYPE	TYPE
P5	P1
GND	VBUS
P6	P2
A+	D-
P7	P3
A-	D+
P8	GND
GND	P4
P9	GND
B-	
P10	
B+	
P11	
GND	

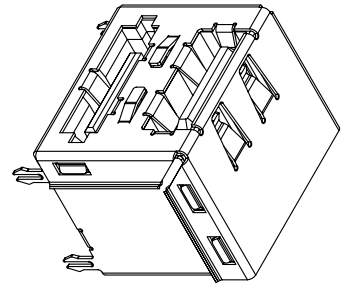
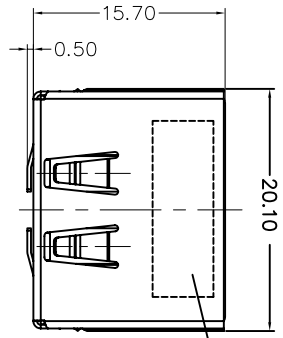
RECOMMENDED P.C.B. LAYOUT
T=1.60
TOLERANCE: ±0.05 (COMPONENT VIEW)



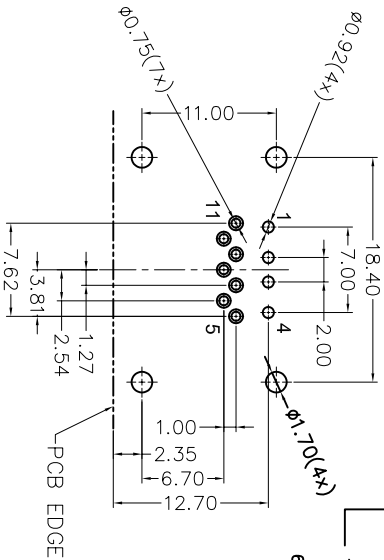
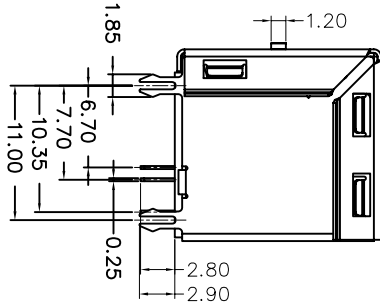
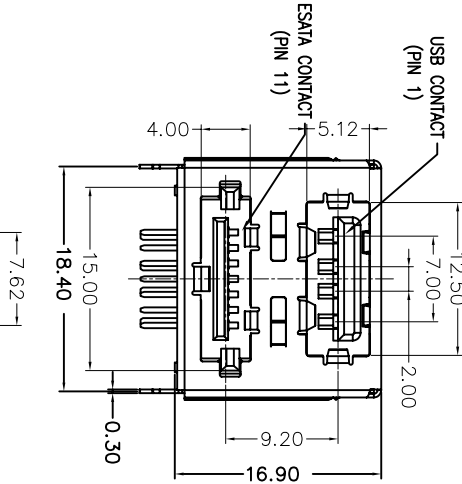
- NOTES:
1. MATERIAL: HOUSING: THERMOPLASTIC, HIGH TEMP, 30% G/F U.94 V-0 (BLACK) SPACER: THERMOPLASTIC, HIGH TEMP, 30% G/F U.94 V-0 (BLACK) ESATA CONTACT: COPPER USB CONTACT: COPPER FRONT SHELL: STEEL ALLOY (SPET) REAR SHELL: COPPER ALLOY
 2. FINISH: CONTACT: GOLD PLATING ON CONTACT AREA 100 u" MIN. MATT TIN PLATING ON SOLDER TAILS 50 u" MIN. NICKEL UNDERPLATING OVER ALL
 3. PRODUCT SPEC: GS-12-402
 4. THE HOUSING WILL WITHSTAND EXPOSURE TO 260C FOR 10 SEC IN A WAVE SOLDER APPLICATION WITH A 1.6MM PCB.
 5. PRODUCT NUMBERING 10074142-0 0 X X LF — LEAD FREE
 6. A SYMBOL WILL BE NEXT TO ANY DIMENSION, VIEW OR NOTE WHICH HAS BEEN MODIFIED WITH THE CURRENT DRAWING REVISION
- PACKING: TRAY
BLANK: 15u" GOLD PLATING

mat'l. code	ecrn no	dr	ddte	tolerances unless otherwise specified	CUSTOMER COPY	title	product family	code
A	109-1094	S.Lin	06/26/09	.XX ± 0.25	projection	USB OVER ESATA, R/A, DIP TYPE	SATA	TWN
B	110-0034	S.Lin	02/05/10	.XXX ± 0.15				1 of 3
C	110-0137	S.Lin	10'-08-23 angles	0' ±2'				
D	T-005421	S.Lin	11'-08-31 dr					
E	EX-S-007171	HKL	2013-06-13					
F	EX-S-14970	HKL	2013-06-13					

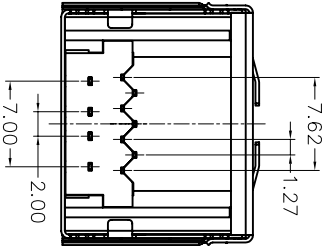
A



DATE CODE: FCXXXXX
YEAR
WEEK



RECOMMENDED PCB LAYOUT(T=1.60mm)
TOLERANCE: ±0.05



USB

NAME	TYPE
P1	VBUS
P2	D-
P3	D+
P4	GND

E-SATA

NAME	TYPE
P5	GND
P6	A+
P7	A-
P8	GND
P9	B-
P10	B+
P11	GND

< PIN DEFINITION >

- NOTES:
- MATERIAL:
HOUSING: THERMOPLASTIC, HIGH TEMP, 30% G/F UL94 V-0(BLACK)
SPACER: THERMOPLASTIC, HIGH TEMP, 30% G/F UL94 V-0(BLACK)
ESATA CONTACT: COPPER
USB CONTACT: COPPER ALLOY
FRONT SHELL: STEEL ALLOY (SPET)
REAR SHELL: COPPER ALLOY

- FINISH:
CONTACT: GOLD PLATING ON CONTACT AREA
100 μ" MIN. MATT TIN PLATING ON SOLDER TAILS
50 μ" MIN. NICKEL UNDERPLATING OVER ALL
REAR SHELL: NICKEL OVER CU PLATING

- PRODUCT SPEC: GS-12-402
- PACKING SPEC: GS-14-1109
- THE HOUSING WILL WITHSTAND EXPOSURE TO 280C FOR 10 SEC IN A WAVE SOLDER APPLICATION WITH A 1.6MM PCB.

- PRODUCT NUMBERING
10074142-1 0 X X LF — LEAD FREE

- A SYMBOL \triangle WILL BE NEXT TO ANY DIMENSION, VIEW OR NOTE WHICH HAS BEEN MODIFIED WITH THE CURRENT DRAWING REVISION

mat'l code	tolerances unless otherwise specified		CUSTOMER COPY	FCI	title	product family	code
ltr	ecn no	dr	ddte	lineor	projection	MM	size
A	T09-1094	S.Lin	06/26/09				dwg no
B	T10-0034	S.Lin	02/05/10	.XXX ± 0.15			10074142
C	T10-0137	S.Lin	10'-08-23	angles	0° ±2°		code
D	T-005421	S.Lin	11'-08-31	dr	Sterling Lin	06/26/09	TWN
E	EX-S-007171	HKL	2013-06-13	engr	HK LIM	2013-06-13	sheet
F	EX-S-14970	HKL	2013-06-13	chr	HK LIM	2013-06-13	2 of 3
sheet	revision	F	F	F	pppd	CH TAN	
index	sheet	1	2	3			

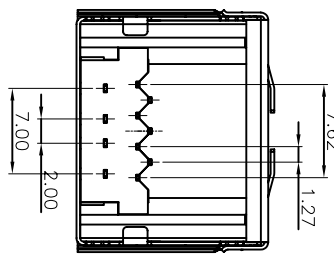
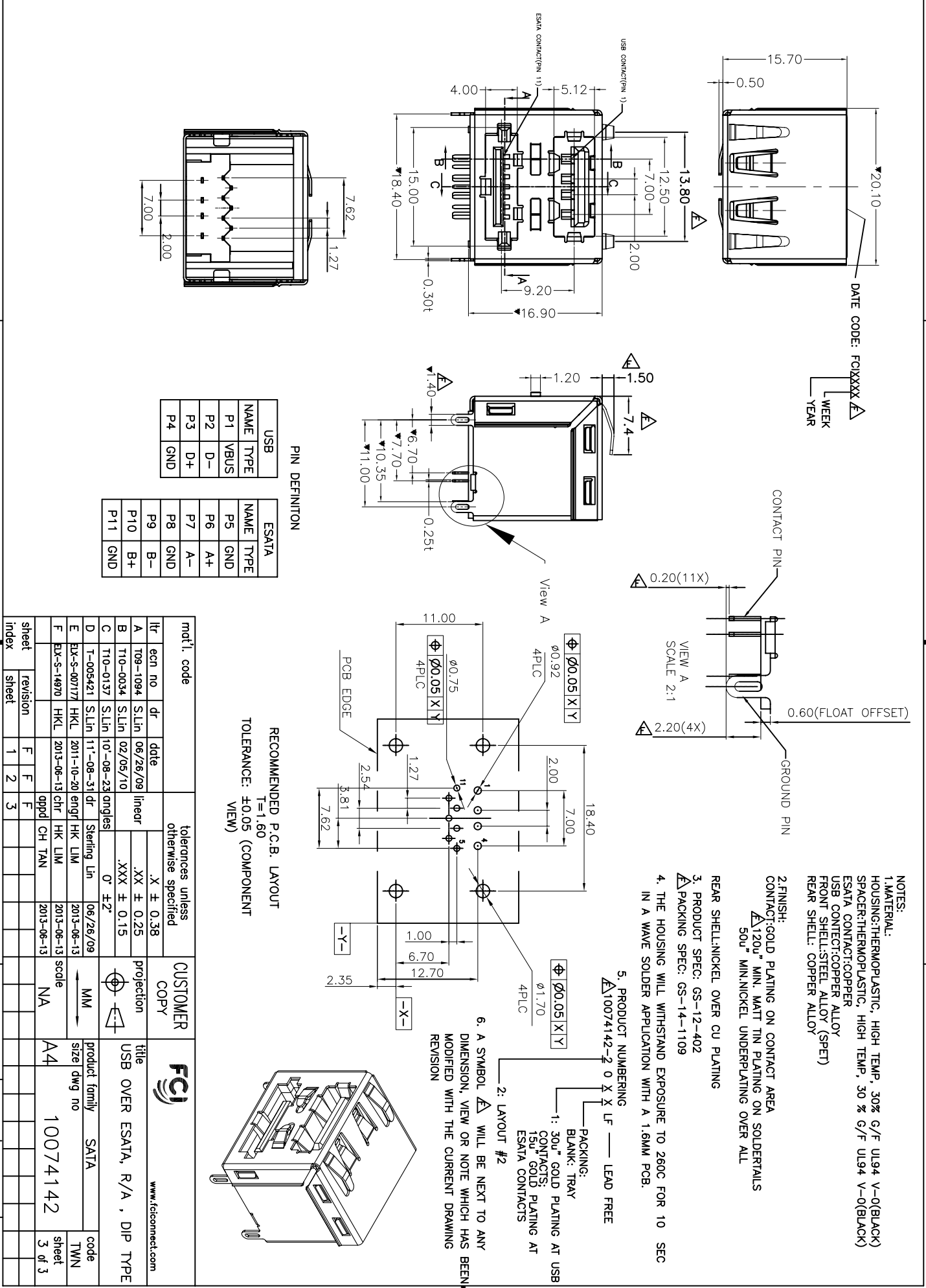
ACAD

3

4

B

A



PIN DEFINITION

USB	ESATA
NAME	NAME
TYPE	TYPE
P1	P5
VBUS	GND
P2	P6
D-	A+
P3	P7
D+	A-
P4	P8
GND	GND
	P9
	B-
	P10
	B+
	P11
	GND

RECOMMENDED P.C.B. LAYOUT
T=1.60
TOLERANCE: ±0.05 (COMPONENT VIEW)

- NOTES:**
1. MATERIAL: HOUSING: THERMOPLASTIC, HIGH TEMP, 30% G/F U.94 V-0(BLACK) SPACER: THERMOPLASTIC, HIGH TEMP, 30% G/F U.94 V-0(BLACK) ESATA CONTACT: COPPER USB CONTACT: COPPER FRONT SHELL: STEEL ALLOY (SPET) REAR SHELL: COPPER ALLOY
 2. FINISH: CONTACT: GOLD PLATING ON CONTACT AREA Δ120μ" MIN. MATT TIN PLATING ON SOLDER TAILS 50μ" MIN. NICKEL UNDERPLATING OVER ALL
 3. PRODUCT SPEC: GS-12-402 ΔPACKING SPEC: GS-14-1109
 4. THE HOUSING WILL WITHSTAND EXPOSURE TO 260C FOR 10 SEC IN A WAVE SOLDER APPLICATION WITH A 1.6MM PCB.
 5. PRODUCT NUMBERING Δ10074142-2 0 X X LF — LEAD FREE

6. A SYMBOL Δ WILL BE NEXT TO ANY DIMENSION, VIEW OR NOTE WHICH HAS BEEN MODIFIED WITH THE CURRENT DRAWING REVISION
- 2: LAYOUT #2
- PACKING: TRAY
BLANK: TRAY
1: 30μ" GOLD PLATING AT USB CONTACTS
15μ" GOLD PLATING AT ESATA CONTACTS

mat'l. code	ecrn no	dr	date	tolerances unless otherwise specified	CUSTOMER COPY	projection	title
	A	T09-1094	S.Lin 06/26/09	.X ± 0.38			USB OVER ESATA, R/A, DIP TYPE
	B	T10-0034	S.Lin 02/05/10	.XX ± 0.25			
	C	T10-0137	S.Lin 10'-08-23 angles	.XXX ± 0.15			
	D	T-005421	S.Lin 11'-08-31 dr	0' ±2"			
	E	EX-S-007171	HKL 2013-06-13				
	F	EX-S-14970	HKL 2013-06-13				

ACAD

code code

sheet

3 of 3