

1|

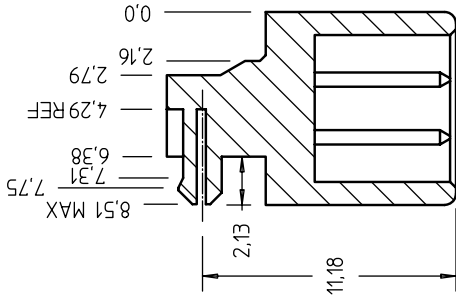
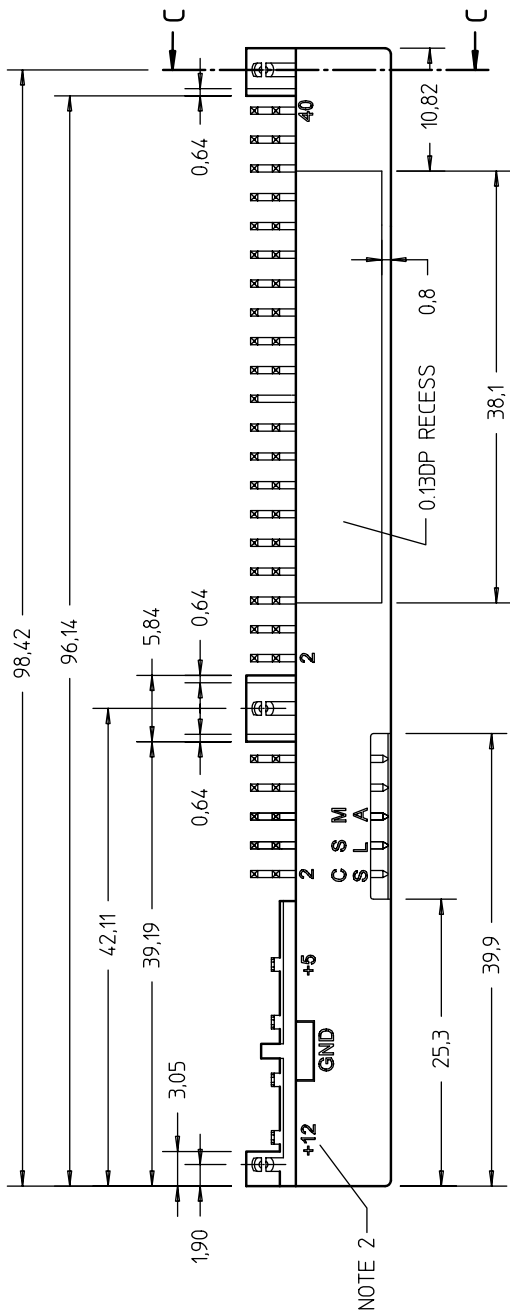
2|

3|

4

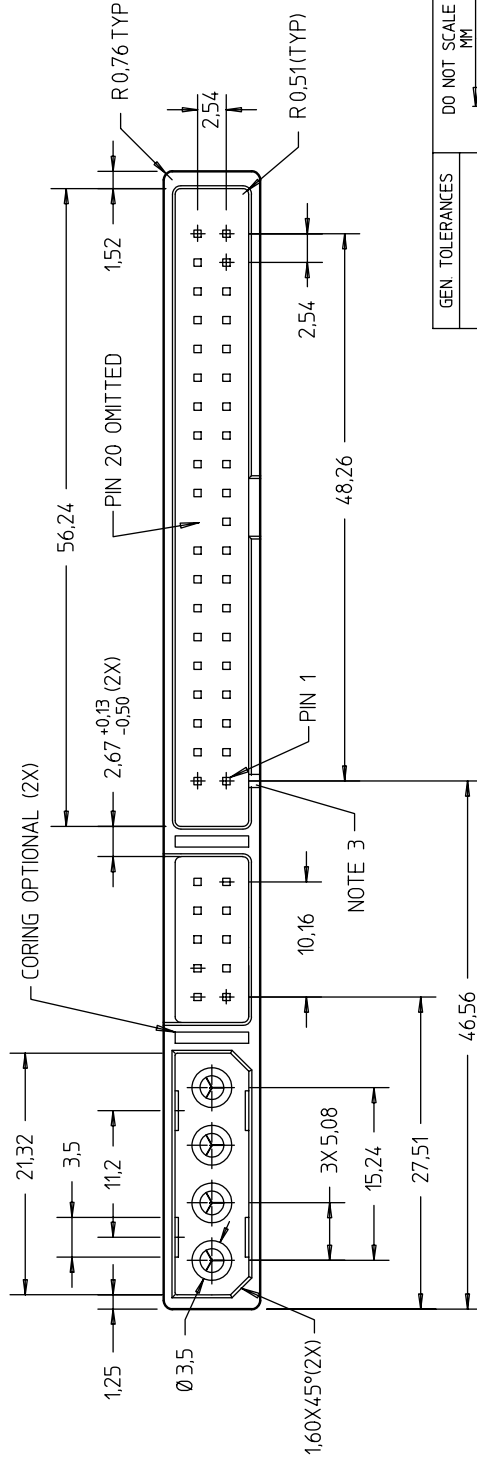
PRODUCT NO
SEE TABLE

REV	DESCRIPTION	REV'D BY	DATE
A	RLSD ECR S90187	R. CRASTA	08OCT.99
F	ECR S05-013	R. CRASTA	18APR.05

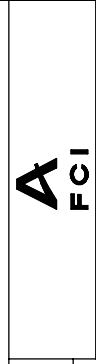


A

A



GEN. TOLERANCES	DO NOT SCALE DWG.	NAME	DATE
XX = ±0.25		R CRASTA	8 OCT.99
X.XX = ±0.13		R CRASTA	18APR.05
ANGLES = ±3°		JOEY NG	18APR.05



DESCRIPTION	
COMBO, RA HDR	
PRODUCT NO.	63430
SCALE	SHT. 1 OF 2

CUSTOMER COPY

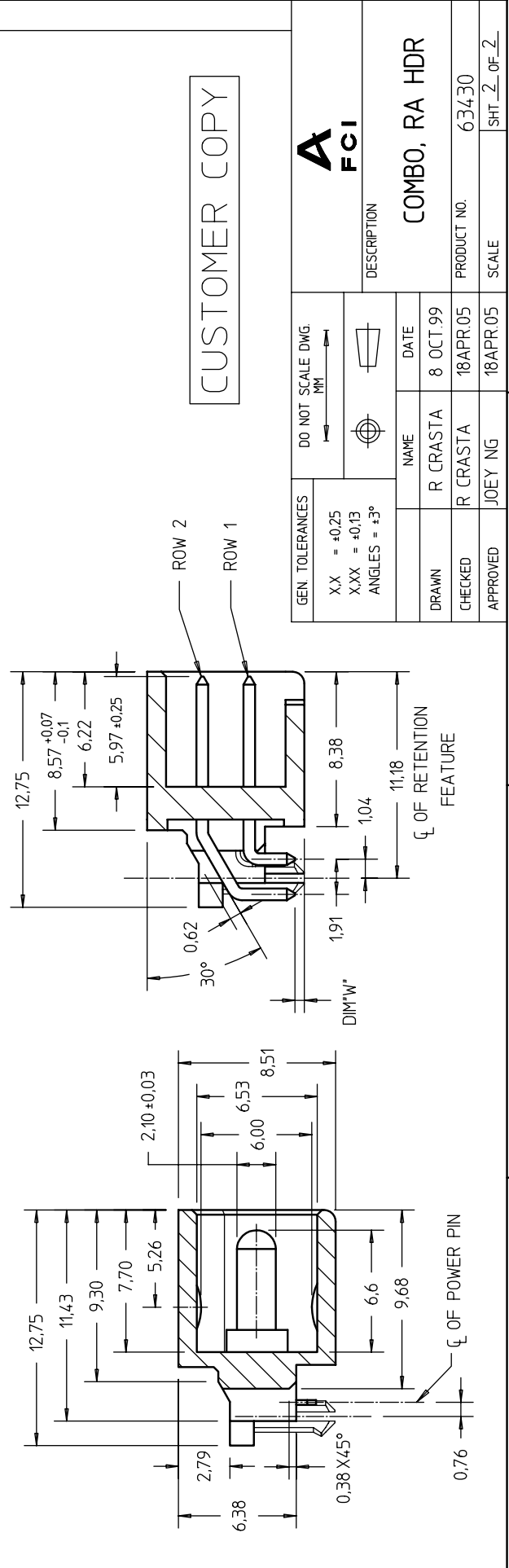
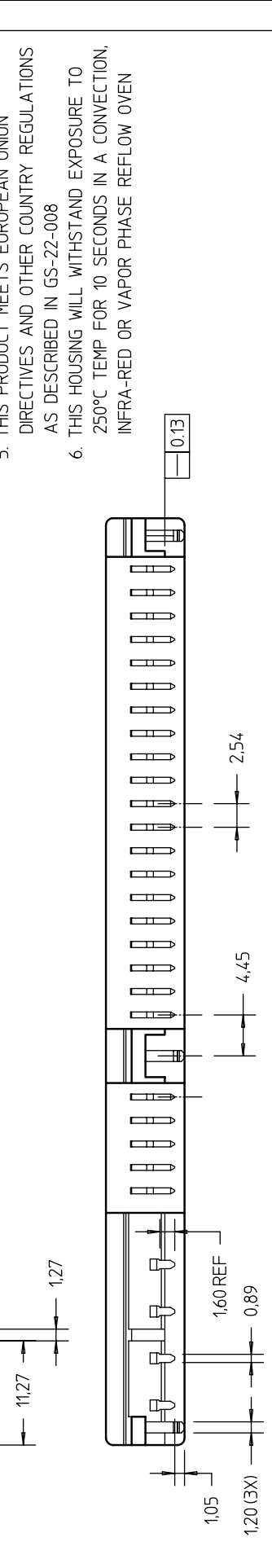
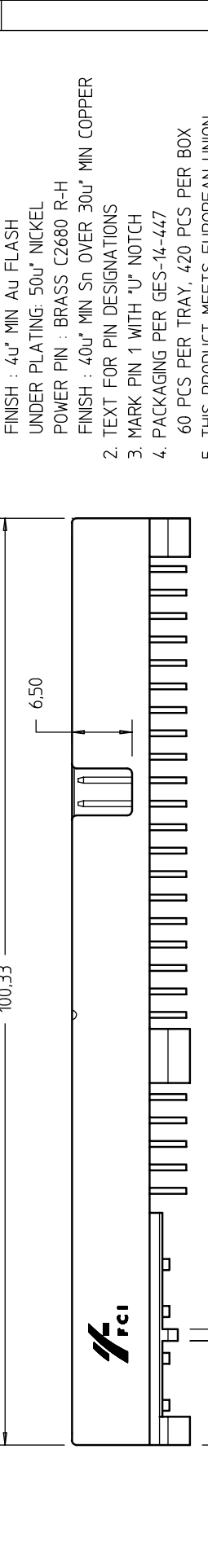
1|

2|

3|

4

PRODUCT NO	DIM"W"
63430-001LF	1.07
63430-001WLF	0.51



CUSTOMER COPY

NOTES:

1. MATERIAL:
HOUSING : 40% GF PPS (BLACK) UL 94V-1
SIGNAL PIN: PH BRONZE
FINISH : 4u" MIN AU FLASH
UNDER PLATING: 50u" NICKEL
POWER PIN : BRASS C2680 R-H
FINISH : 40u" MIN Sn OVER 30u" MIN COPPER
2. TEXT FOR PIN DESIGNATIONS
3. MARK PIN 1 WITH "U" NOTCH
4. PACKAGING PER GES-14-447
60 PCS PER TRAY, 420 PCS PER BOX
5. THIS PRODUCT MEETS EUROPEAN UNION DIRECTIVES AND OTHER COUNTRY REGULATIONS AS DESCRIBED IN GS-22-008
6. THIS HOUSING WILL WITHSTAND EXPOSURE TO 250°C TEMP FOR 10 SECONDS IN A CONVECTION, INFRA-RED OR VAPOR PHASE REFLOW OVEN

GEN. TOLERANCES	DO NOT SCALE DWG.	DESCRIPTION	
XX = ±0.25	 	COMBO, RA HDR	
XX = ±0.13			
ANGLES = ±3°		NAME	DATE
		R CRASTA	8 OCT.99
		R CRASTA	18APR05
		JOEY NG	18APR05
		PRODUCT NO.	63430
		SCALE	SHT. 2 OF 2

1 1 2 1 3 1 4

A B 4