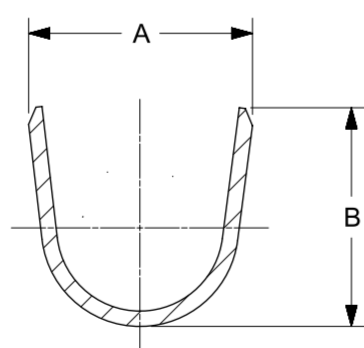
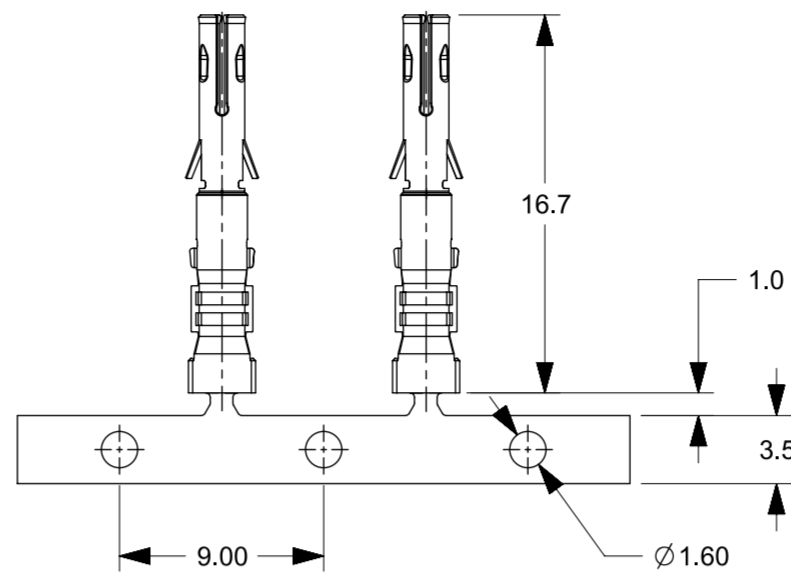


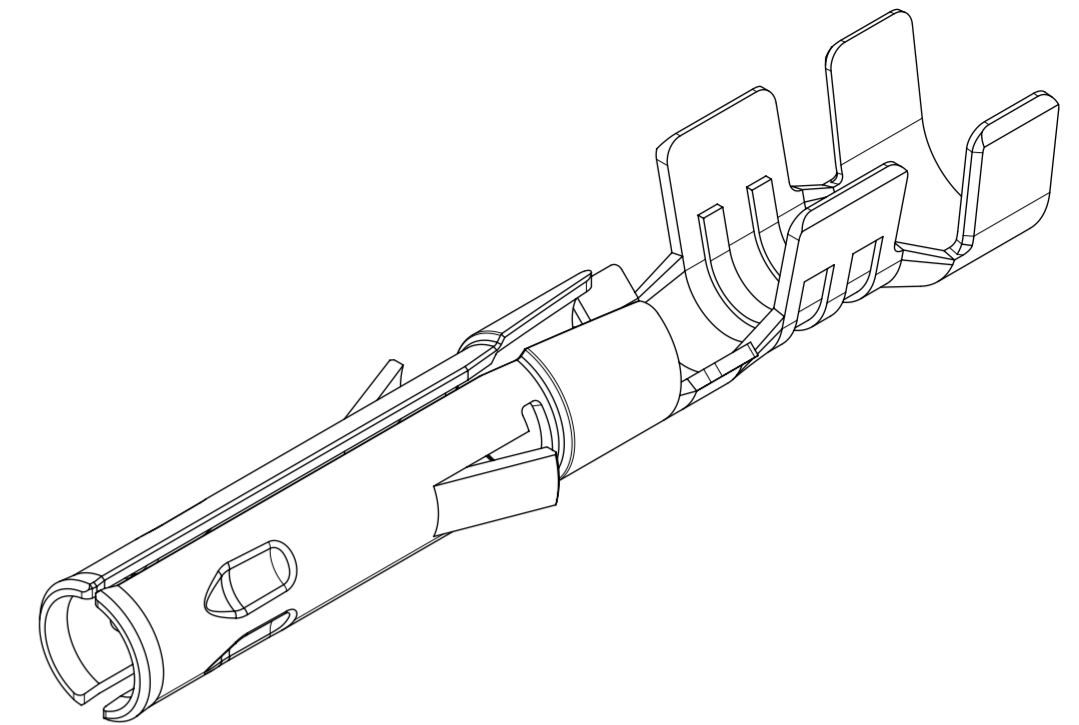
SECTION C-C



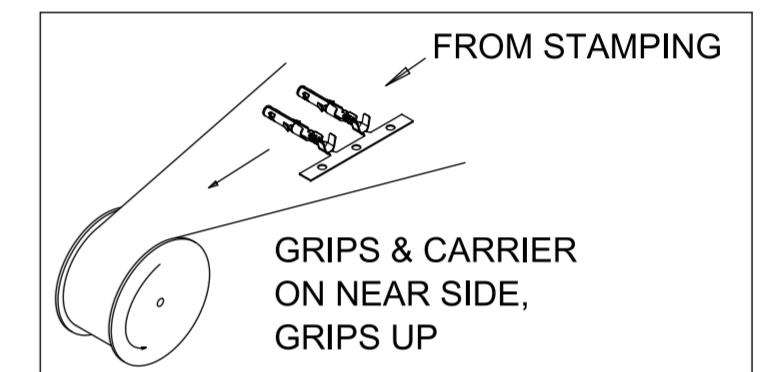
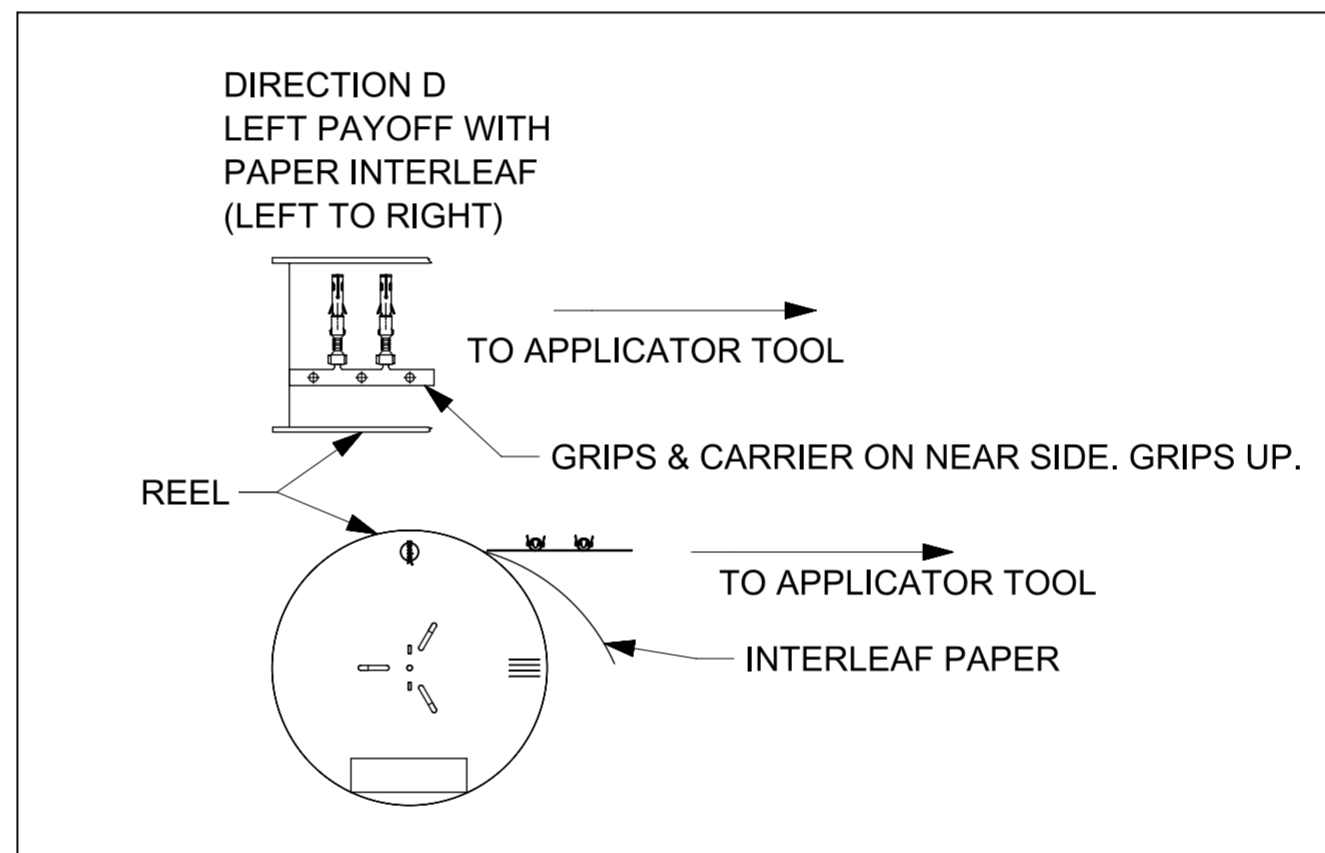
SECTION D-D



STRIP LAYOUT



REELING DIRECTIONS



| SI. NO | PART NUMBER | WIRE RANGE | WIRE STYLE | DIM A | DIM B | DIM X | DIM Y |
|--------|-------------|------------|----------------|-------|-------|-------|-------|
| 1 | 1501811016 | 16-18 AWG | 16 AWG, UL1061 | 2.96 | 2.90 | 2.72 | 2.71 |
| | | | 18 AWG, UL1007 | 2.96 | 2.90 | 2.72 | 2.71 |
| | | | 18 AWG, UL1061 | 2.96 | 2.90 | 2.72 | 2.71 |
| 2 | 1501811020 | 20-22 AWG | 20 AWG, UL1007 | 2.58 | 2.40 | 2.44 | 2.03 |
| | | | 20 AWG, UL1061 | 2.58 | 2.40 | 2.44 | 2.03 |
| | | | 22 AWG, UL1007 | 2.58 | 2.40 | 2.44 | 2.03 |
| | | | 22 AWG, UL1061 | 2.58 | 2.40 | 2.44 | 2.03 |

NOTES:

1. MATERIAL: CARTRIDGE BRASS ALLOY.
2. FINISH: PREPLATED OVERALL TIN ONLY- BRIGHT FINISH AND MIN THICKNESS 1.5µm.
3. PRODUCT SPECIFICATION: 1501760001-PS.
4. PACKAGING SPEC. REFER PK-150180-001.
5. THIS PART CONFORMS TO CLASS B REQUIREMENTS OF COSMETIC SPEC PS-45499-002.
6. TERMINAL TO BE USED WITH SERIES 150178 AND 150179.
7. TERMINAL MATES WITH THE SERIES 150180.

THIS DRAWING CONTAINS INFORMATION THAT IS PROPRIETARY TO MOLEX ELECTRONIC TECHNOLOGIES, LLC AND SHOULD NOT BE USED WITHOUT WRITTEN PERMISSION

| | | | | | | | |
|--|--|---------------------------------------|-----------------|--|----------------------------------|-----------------|--------------|
| EC NO: 107456 DRWN: SNAGARAVENKA CHKD: REV: APPR: KPRASAD | 2016/10/26 | GENERAL TOLERANCES (UNLESS SPECIFIED) | DIMENSION UNITS | SCALE | | | |
| | 2016/10/26 | ANGULAR TOL ± 0.5 ° | MM | 10:1 | | | |
| | 4 PLACES ± | SS06 | DRWN BY | DATE | ECONOLATCH FEMALE CRIMP TERMINAL | | |
| | 3 PLACES ± | 2015/05/28 | CHK'D BY | DATE | | | |
| 2 PLACES ± 0.25 | PRODUCT CUSTOMER DRAWING | | | SERIES: 150181 MATERIAL NUMBER: SEE CHART CUSTOMER: GENERAL MARKET | | | |
| 1 PLACE ± 0.35 | KPRASAD 2015/06/04 | | | | | | |
| 0 PLACES ± | DRAFT WHERE APPLICABLE MUST REMAIN WITHIN DIMENSIONS | | | DRAWING SIZE | THIRD ANGLE PROJECTION | DOCUMENT NUMBER | |
| B | | A2 | A2 | SD-150181-0001 | PSD | DOC PART | SHEET NUMBER |
| | | | | 000 | | | 1 OF 1 |