

DETAILS

Product Number	C12226_STRADA-FW
Family	Strada
Type	Lens
Color	clear
Diameter	19,6+15,5 mm
Height	11,2 mm
Style	rectang
Optic Material	PMMA
Holder Material	
Fastening	glue, pin, screw
Status	production ready
ROHS Compliant	Yes
Date Updated	14/05/2014



OPTICAL PROPERTIES

LED	Viewing	Light	Effi-	cd/lm	Connector
	Angle	Beam	ciency		
MX-6	Asymmetric deg	Asymmetric	92 %	-	-
MX-3	Asymmetric deg	Asymmetric	92 %	-	-
NS6x83	Asymmetric deg	Asymmetric	92 %	-	-
NS3x83	Asymmetric deg	Asymmetric	92 %	-	-
OLP-x5050F6L	Asymmetric deg	Asymmetric	93 %	0.200	-

D

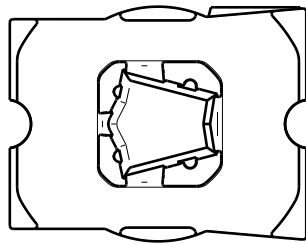
C

B

A

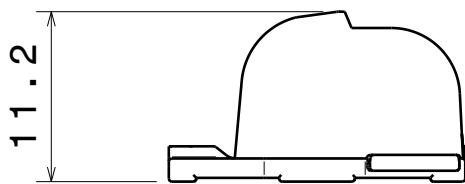
4

4



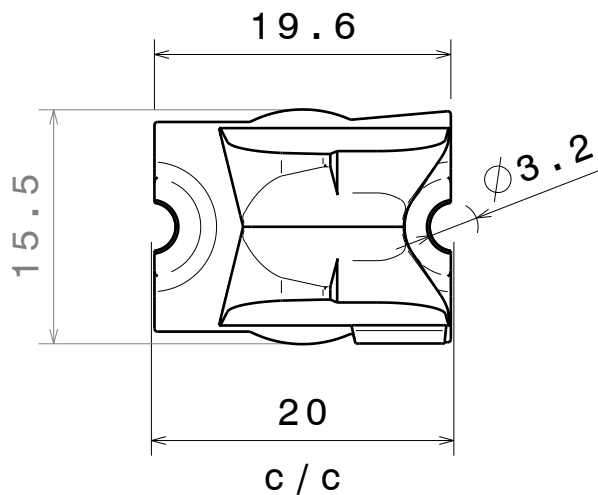
3

3



2

2



Top view
Scale: 2:1

MATERIALS
Lens: PMMA

This drawing is our property.
It can't be reproduced
or communicated without
our written agreement.



Ledil Oy
Salorankatu 10
24240 SALO
Finland

DRAWING TITLE

Datasheet Strada-FW-N83 lens

DRAWN BY

pv

DATE

23.8.2011

CHECKED BY

ah

DATE

22.8.2011

SIZE

A4

DRAWING NUMBER

C12226

REV

1

DESIGNED BY

hh

DATE

22.8.2011

SCALE

2:1

WEIGHT (g)

SHEET

1/1

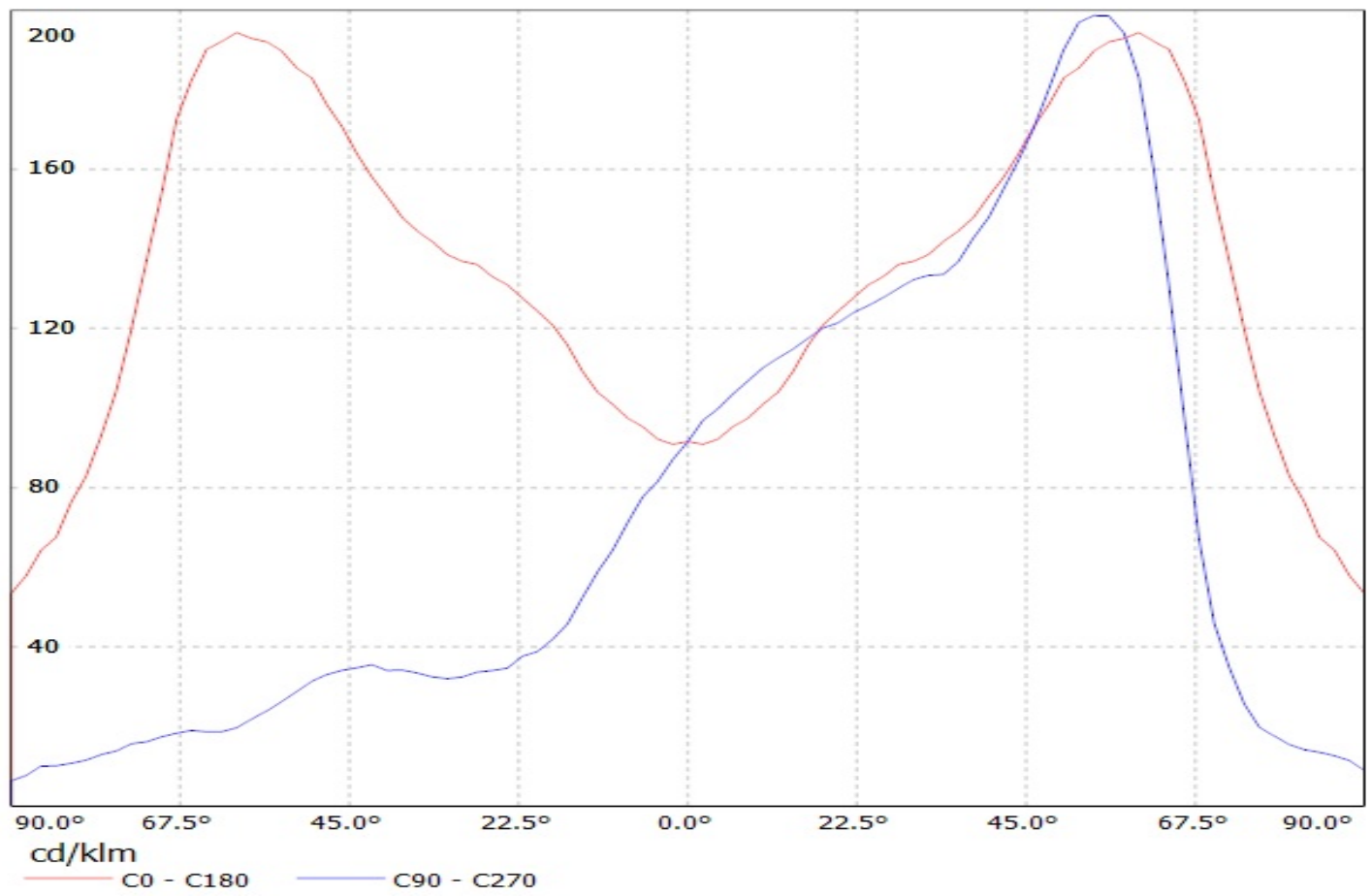
D

A

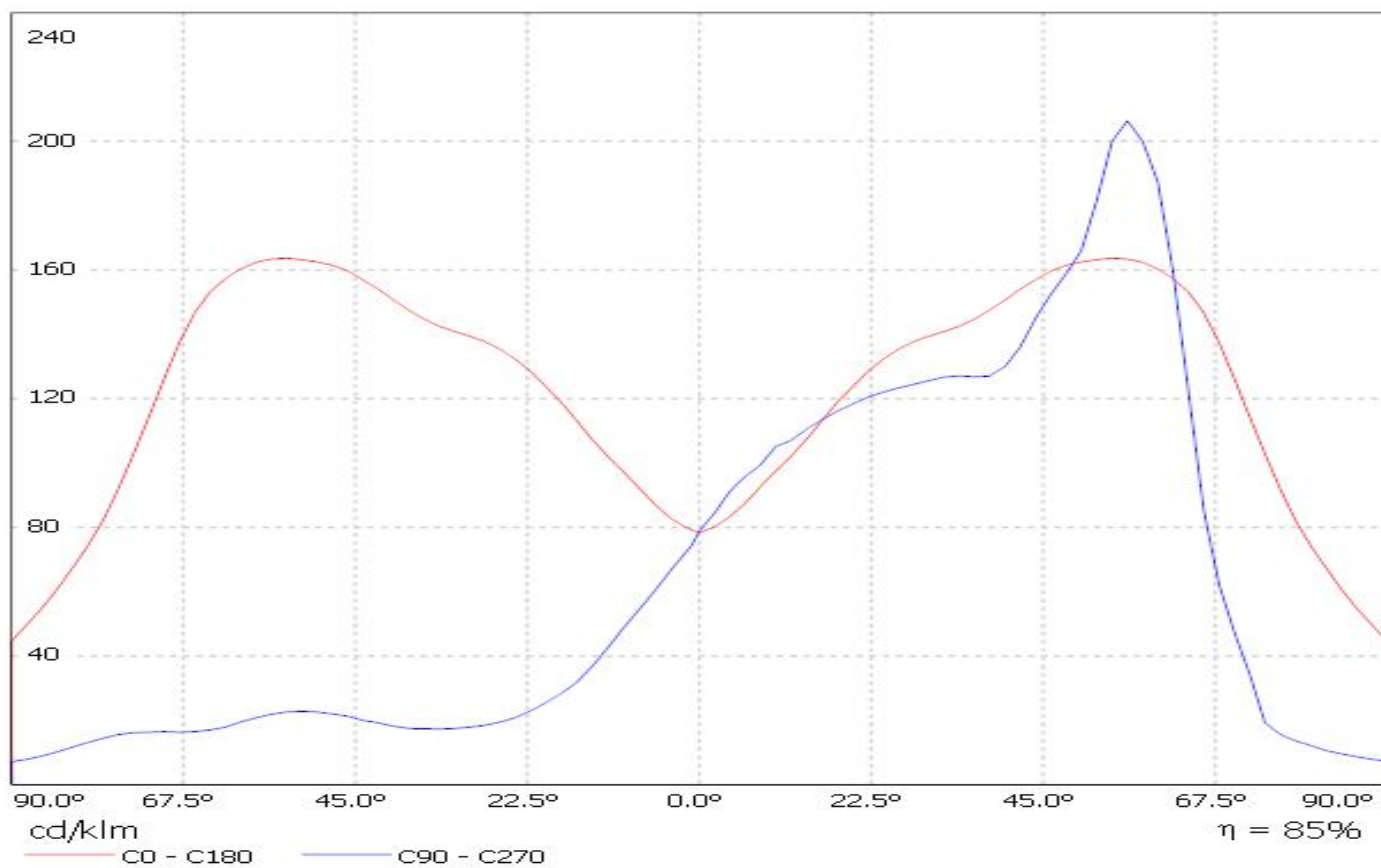
1

1

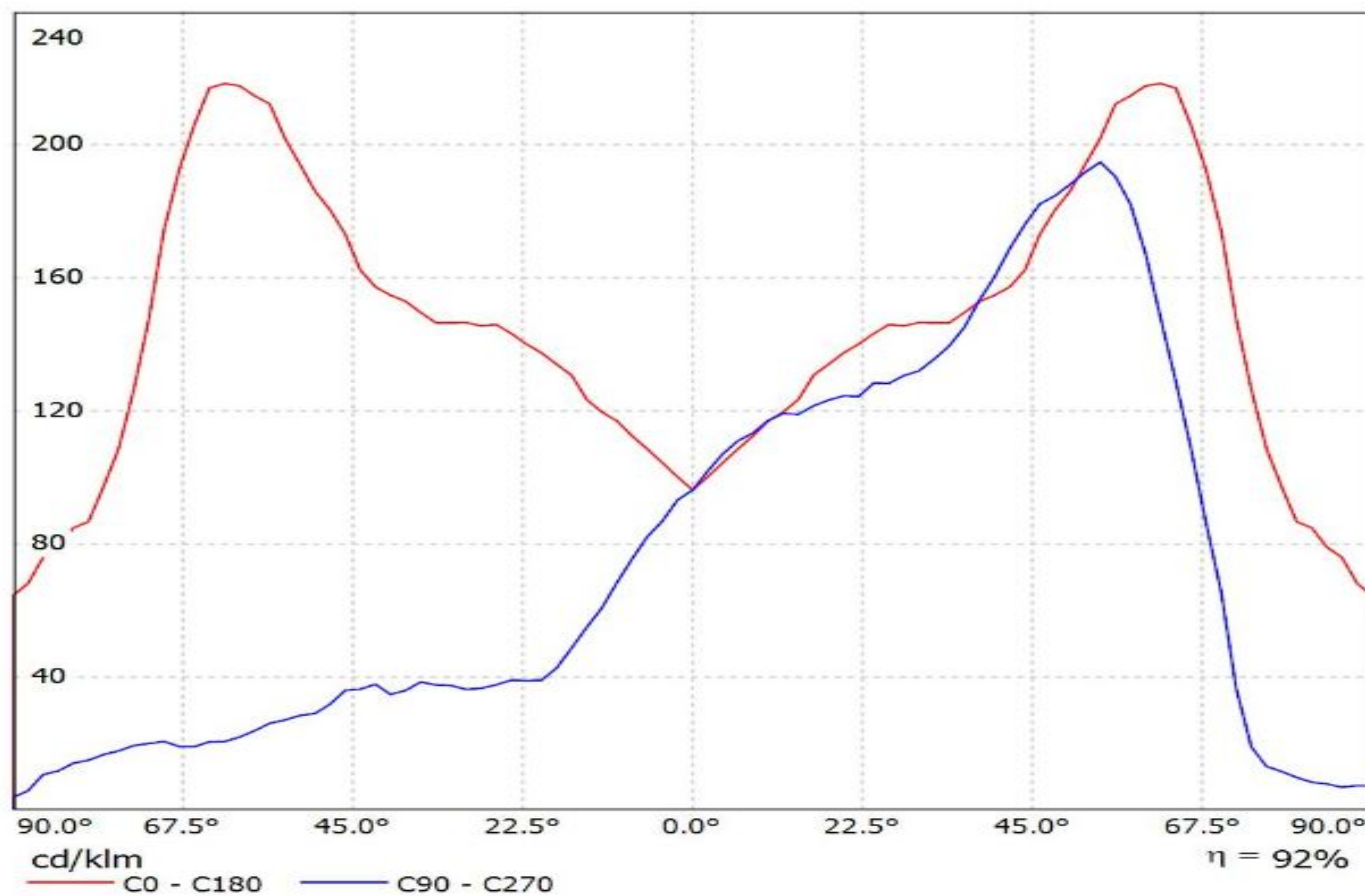
Luminaire: Ledil Oy C12226_STRADA-FW-MX6 LOR=92%
Lamps: 1 x Cree MX6 67lm 250mA



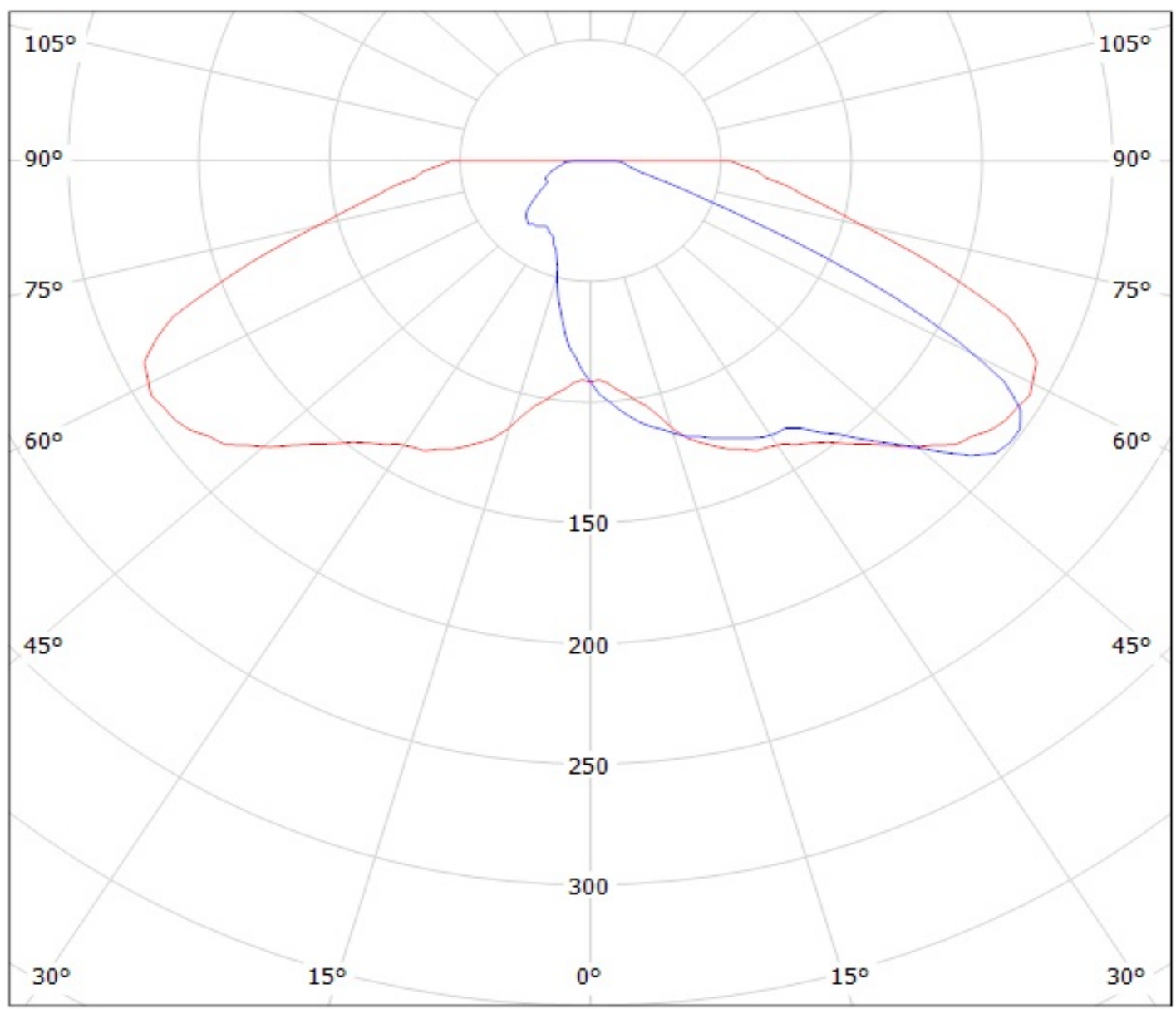
Luminaire: Ledil Oy C12226_Strada-FW_N083 C12226_Strada-FW_N083
Lamps: 1 x Nichia N083 6chip white



Luminaire: Ledil Oy C12226_STRADA-FW (Optogan 80lm @ 250mA) Efficiency=94%
Lamps: 1 x Optogan 80lm @ 250mA



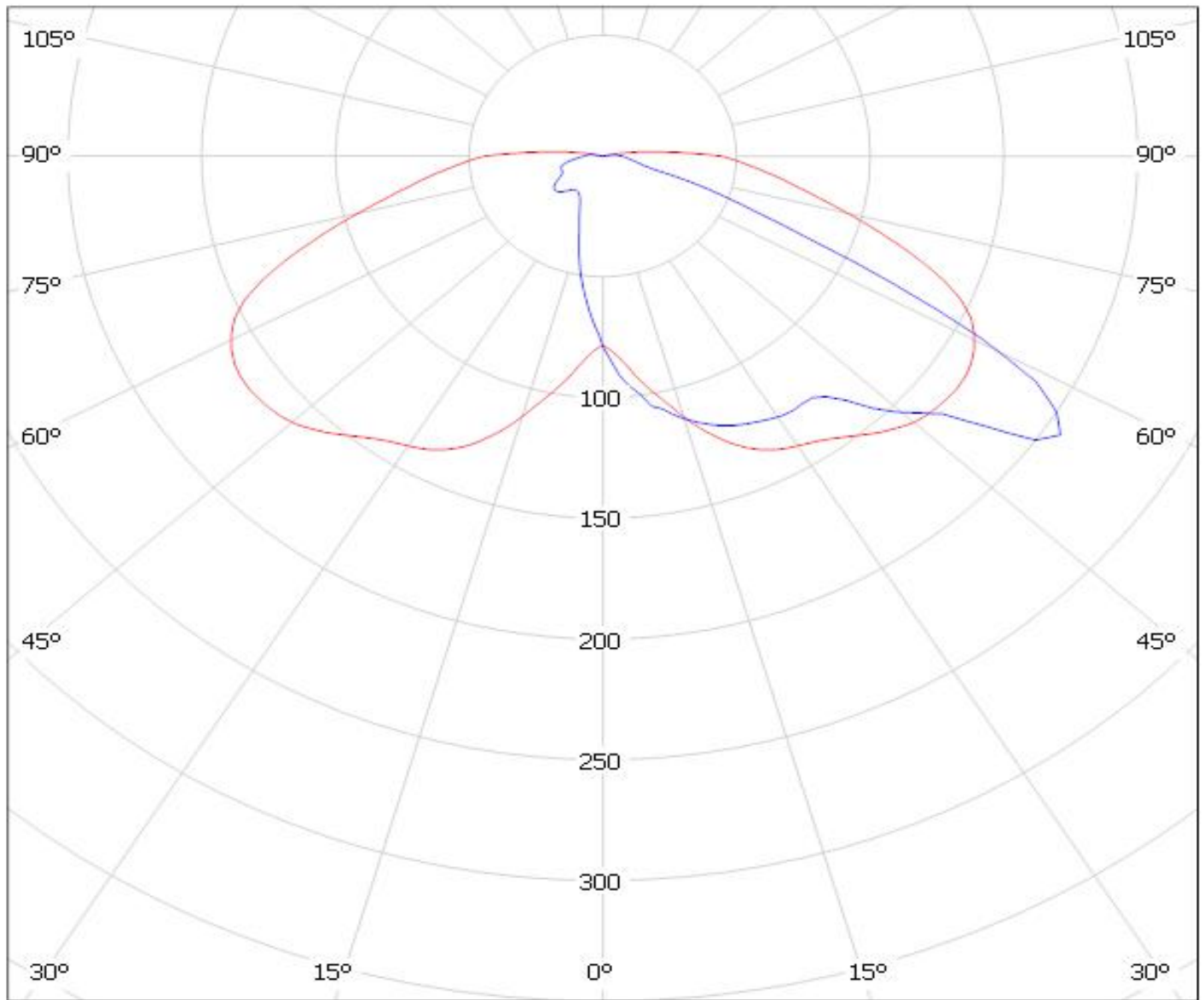
Luminaire: Ledil Oy C12226_STRADA-FW-MX6 LOR=92%
Lamps: 1 x Cree MX6 67lm 250mA



cd/klm
— C0 - C180 — C90 - C270

Luminaire: Ledil Oy C12226_Strada-FW_N083 C12226_Strada-FW_N083

Lamps: 1 x Nichia N083 6chip white



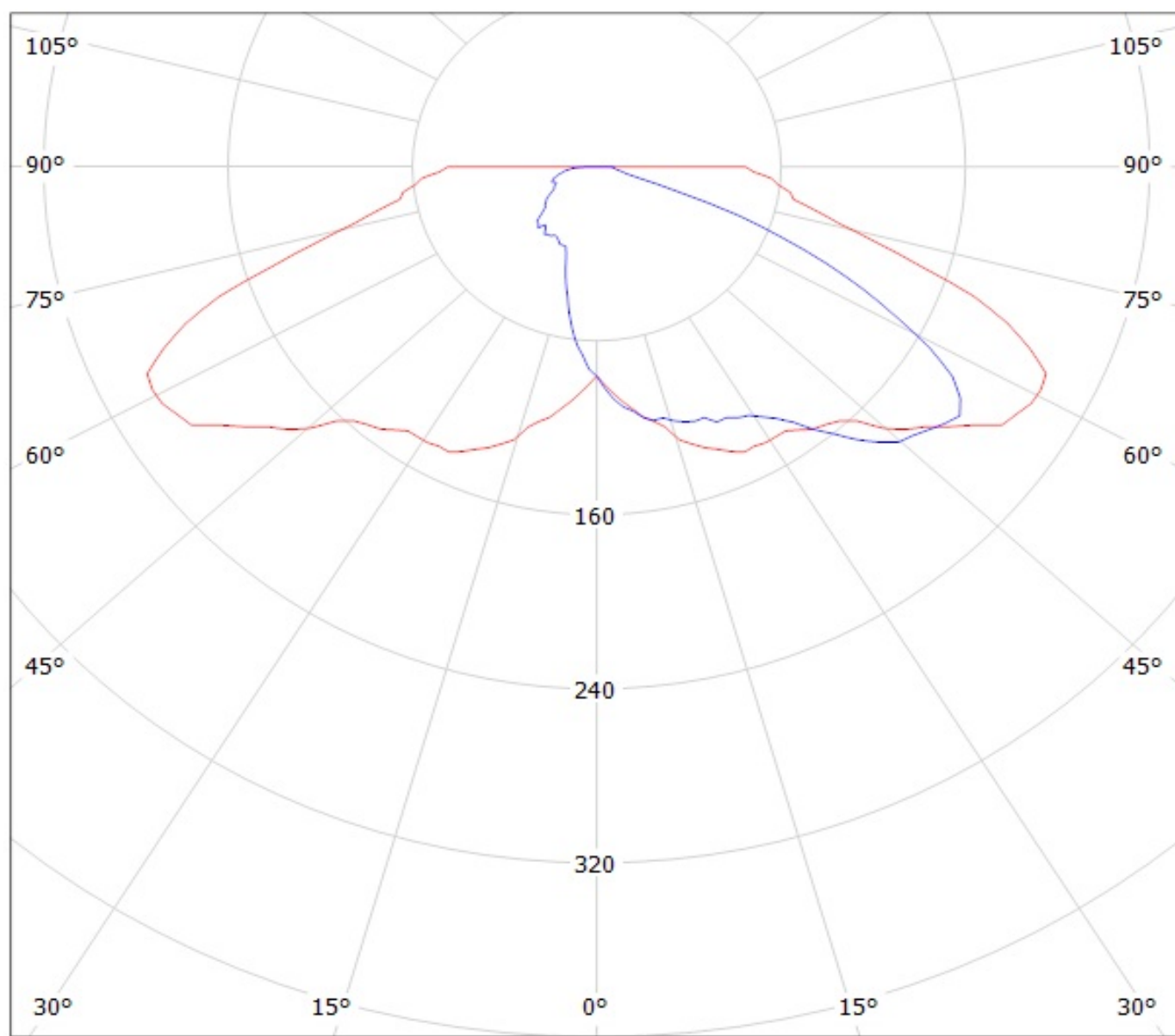
cd/klm

— C0 - C180

— C90 - C270

$\eta = 85\%$

Luminaire: Ledil Oy C12226_STRADA-FW (Optogan 80lm @ 250mA) Efficiency=94%
Lamps: 1 x Optogan 80lm @ 250mA



cd/klm

— C0 - C180

— C90 - C270

NOTE: The typical divergence will be changed by different color, chip size and chip position tolerance. The typical total divergence is the full angle measured where the luminous intensity is half of the peak value.