

1

2

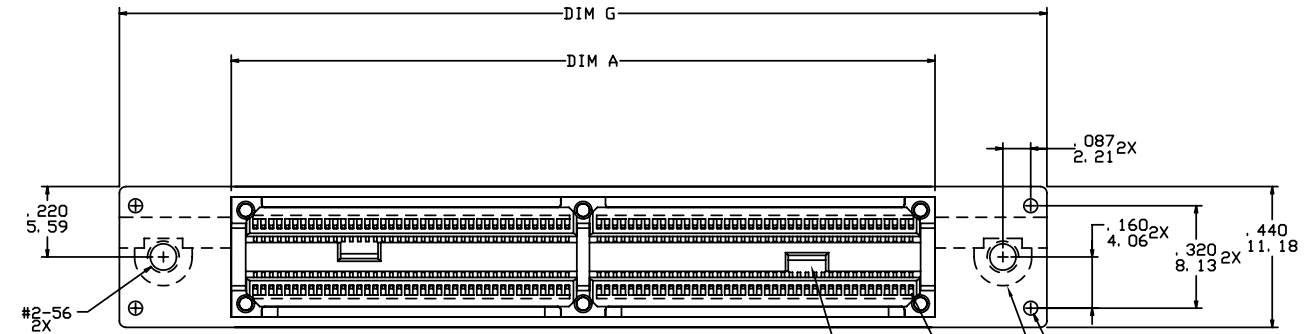
3

4

PRODUCT NUMBER
SEE TABLE

A

A



PROCESSING CAP OMITTED
FOR CLARITY

MFG. OPTION

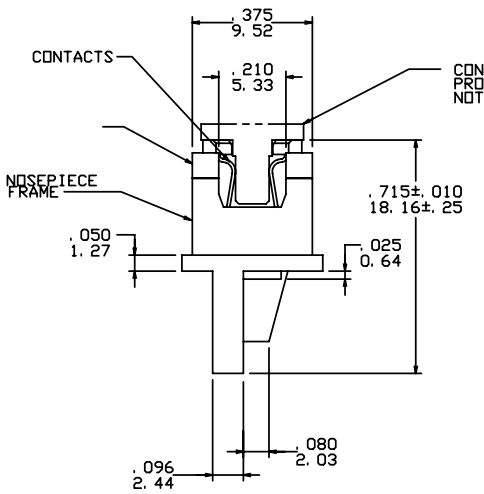
PDS#1

Ø .0430
1.092
HOLE
4X

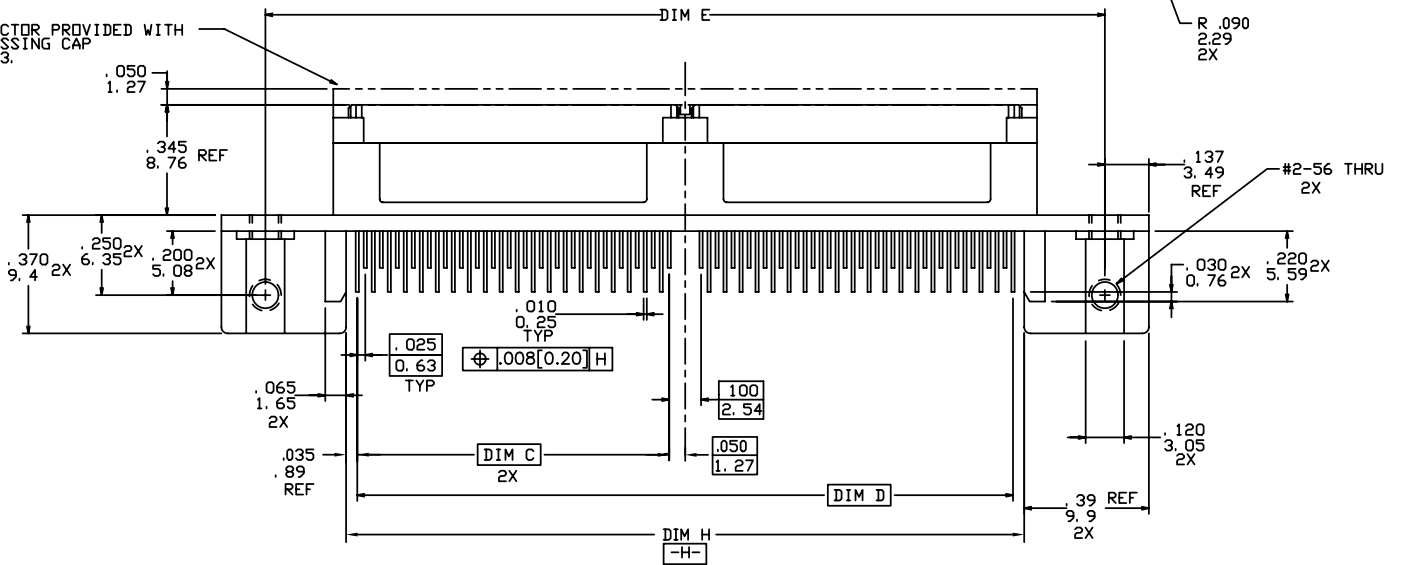
R .090
2.29
2X

B

B



CONNECTOR PROVIDED WITH
PROCESSING CAP
NOTE 3.



C

C



Copyright FCI.

D

D

www.fciconnect.com			surface ISO 1302	tolerance std ISO 406	projection ISO 10	INCH/MM
			TOLERANCES UNLESS OTHERWISE SPECIFIED			
Dr	D. WAUGHEN	1/10/94	ANGULAR	LINEAR	size	Scale
Eng	M. HAHN	1/10/94	0°	±2°	A4	2.000
Chr	M. HAHN	1/10/94	Product family		ECN	N10-0427
Appr	M. HAHN	1/10/94	Micropax		Spec ref	
rev			title		dwg no	
ecn no			.025 STRADDLE RECEPT.		91894	
dr			DOUBLE MODULE		Rev.	
date			catalog no		M	
			CUSTOMER		sheet 1 of 2	

rev	ecn no	dr	date
M	N10-0427	KW	2011-03-08
H	V60749	EPK	6/17/96
J	V12115	MEM	10/9/01
K	M06-0166	MHT	5/03/06
L	M08-0251	MHT	8/09/08

REV F - 2006-04-17

1

2

PDM: Rev:M

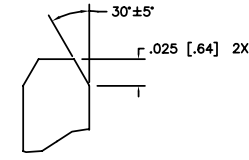
STATUS Released

4 Printed: Apr 18, 2011

PRODUCT NUMBER	NO. OF CONTACTS	DIM A	DIM C	DIM D	DIM E	DIM F	DIM G	DIM H	BOARD THICKNESS	SOLDERBUMP	PLATING NOTE 2	LEAD FREE OPTION
91894-001	160	2.200/55.88	.975/24.76	2.050/52.07	2.625/66.68	2.110/53.59	2.900/73.66	2.120/53.85	.062/1.58	NO	30 GXT	NOTE 4
91894-104										YES		
91894-003	200	2.700/68.58	1.225/31.12	2.550/64.77	3.125/79.38	2.610/66.29	3.400/86.36	2.620/66.55	.062/1.58	NO	30 GXT	
91894-103										YES		

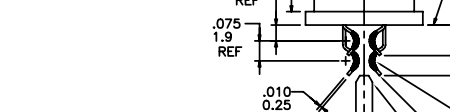
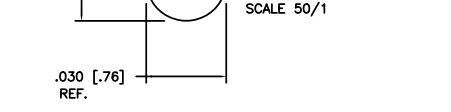
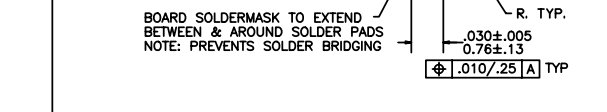
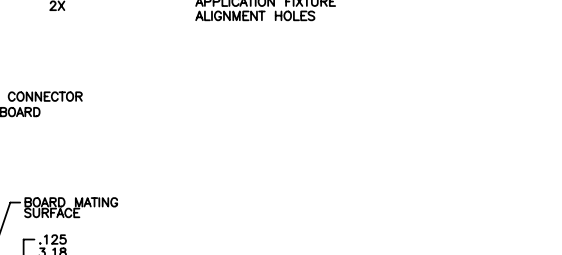
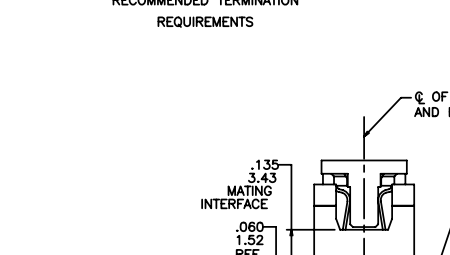
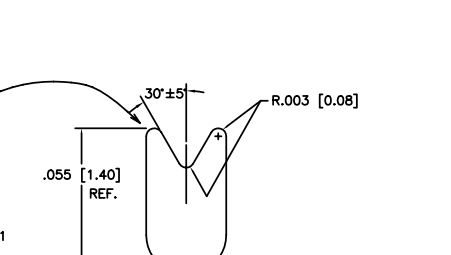
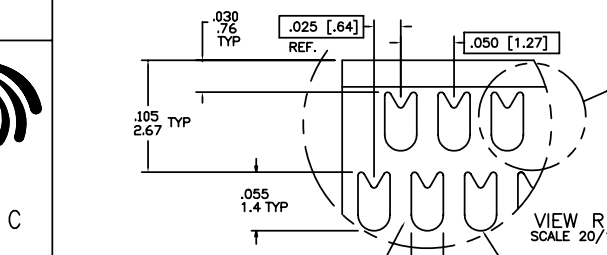
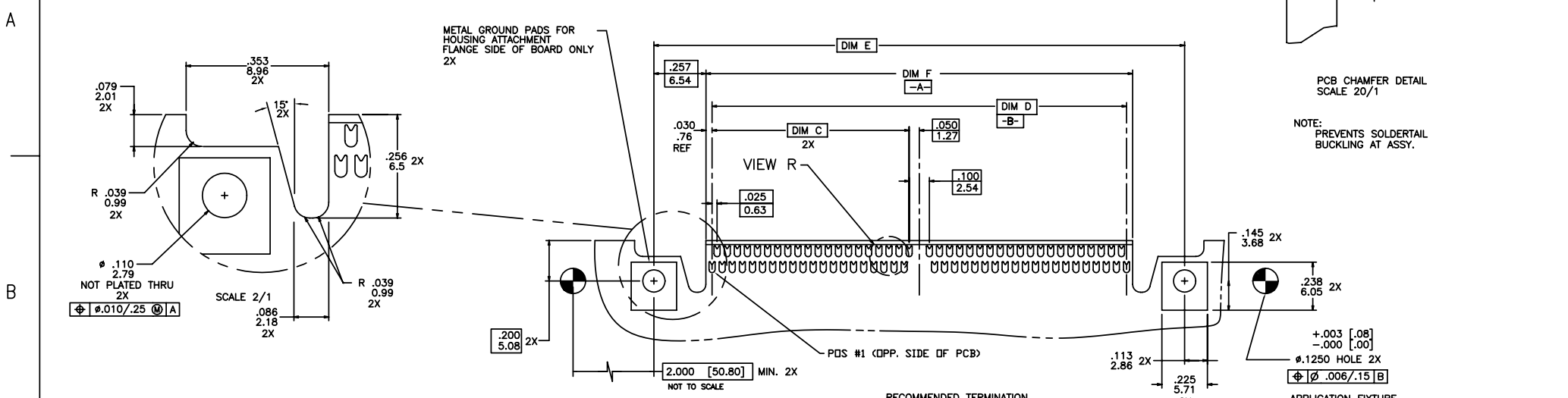
OBSOLETE

OBSOLETE



PCB CHAMFER DETAIL SCALE 20/1

NOTE: PREVENTS SOLDER TAIL BUCKLING AT ASSY.



- NOTES:
- MATERIALS:
DIELECTRIC: LCP
CONTACTS: Be Cu
FRAME: ZINC ALLOY #3
 - PLATING:
SOLDER TAILS: 150u"/3.81u Sn Pb
FRAME: 100u"/2.54u Ni
CONTACT: 30u"/0.76u GXT OVER 50u"/1.27u Ni
LEAD FREE PLATING:
SOLDER TAILS: 150u"/3.81u Sn
FRAME: 100u"/2.54u Ni
CONTACT: 30u"/0.76u GXT OVER 50u"/1.27u Ni
 - DO NOT REMOVE PROCESSING CAP UNTIL SOLDERING IS COMPLETED. CAP WILL PREVENT POTENTIAL NOSE PIECE BOW DURING HIGH TEMP. SOLDERING PROCESS.
 - ADD "LF" SUFFIX AT THE END OF PART NUMBER FOR LEAD FREE OPTION.
 - THE HOUSING WILL WITHSTAND EXPOSURE TO 260°C PEAK TEMPERATURE FOR 10-20 SECONDS IN A CONVECTION, INFRA-RED OR VAPOR PHASE REFLOW OVEN. SEE APPLICATION NOTES/PROCEDURES IF THEY ARE AVAILABLE.
 - THIS PRODUCT MEETS EUROPEAN UNION DIRECTIVES AND OTHER COUNTRY REGULATION AS DESCRIBED IN GS-22-008.
 - SEE BUS-20-084 (SET-UP APPLICATION SPEC) FOR REFERENCE.

www.fciconnect.com			surface ISO 1302	tolerance std ISO 406	projection	INCH/MM
			TOLERANCES UNLESS OTHERWISE SPECIFIED			
Dr	D. WAUGHEN	1/10/94	ANGULAR	0.X	±0.01/0.3	size A4
Eng	M. HAHN	1/10/94		LINEAR	0.XX	
Chr	M. HAHN	1/10/94	0° ±2°	0.XXX	±0.002/0.0051	ECN N10-0427
Appr	M. HAHN	1/10/94	Product family	Micropax		Spec ref
FCI			title .025 STRADDLE RECEPT. DOUBLE MODULE		dwg no 91894	Rev. M
			catalog no		CUSTOMER	sheet 2 of 2