

JumpStart Board JSCC9M2443

Power Supply  
page 6

Reset  
page 6

JTAG  
page 6

Ethernet  
page 5

RS232  
page 9

USB  
page 3

SD/MMC  
page 3

VGA  
page 4

MEI  
page 8


LCD,  
Touch  
page 5

Digital  
I/O  
page 5

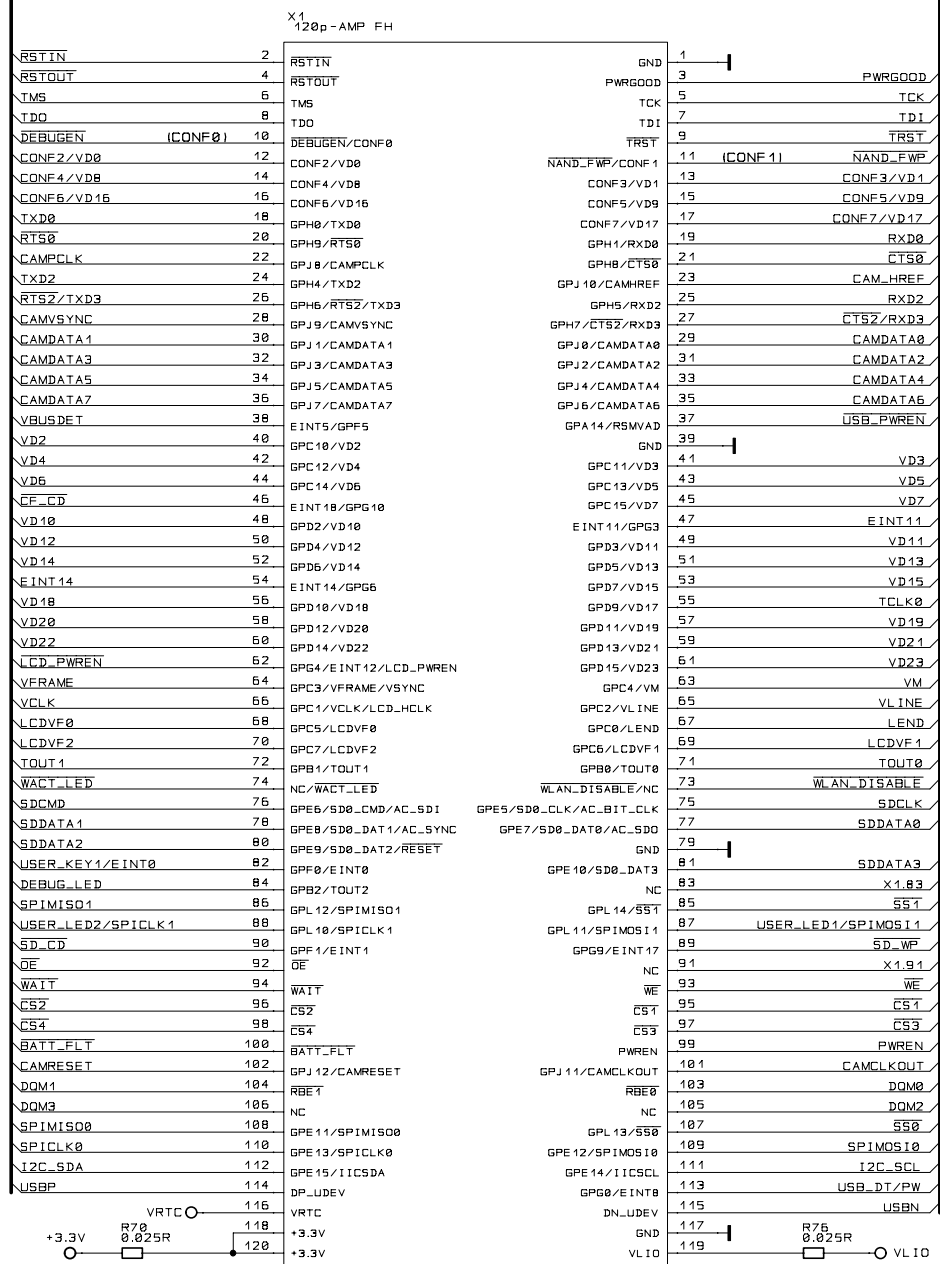
Expansion  
Connectors  
page 7

Board-to-Board Connectors  
page 2

All rights reserved © Digi International Inc.

Usable for:				Scale:			Filename: JSCC9M2443.scm		
				ConnectCore 9M 2443 Dev. Board					
				Note: This layout version is for reference only. Some parts may not be equipped or may have different values.					
				Designer	17.03.2009	Hp5	Title:  Overview		
				Approved					
				ISO					
							Partnumber:		Sheet
							30010071-02 Rev A		1
				Rev.			Provided for:		of 9
02	Initial layout	17.03.2009	Hp5				Provided by:		

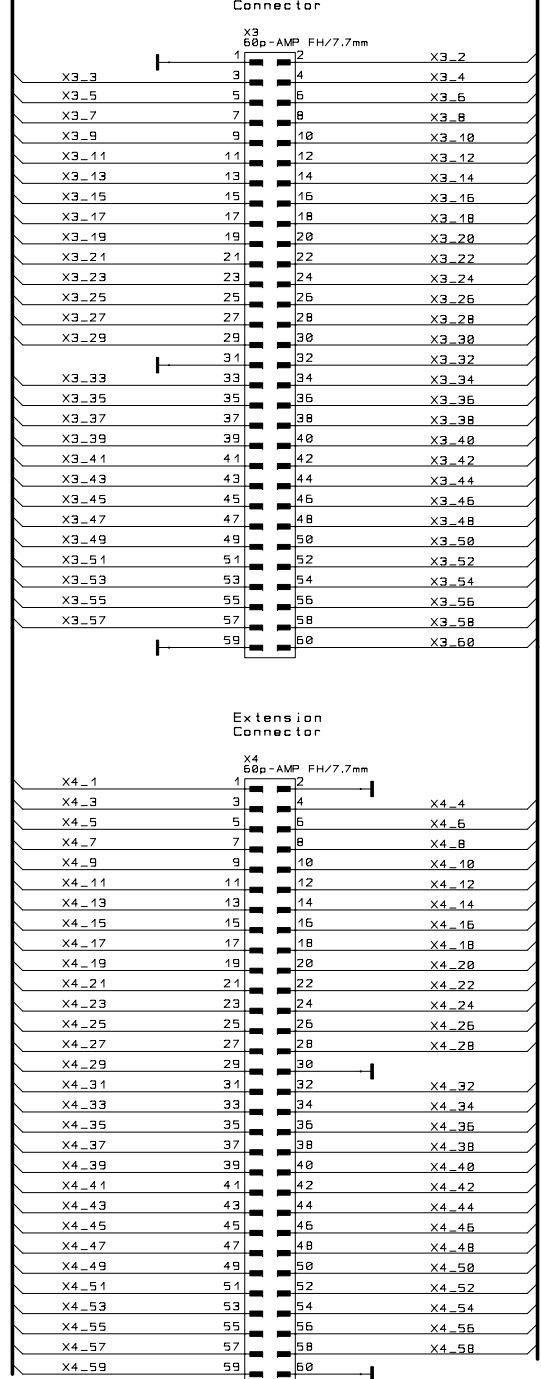
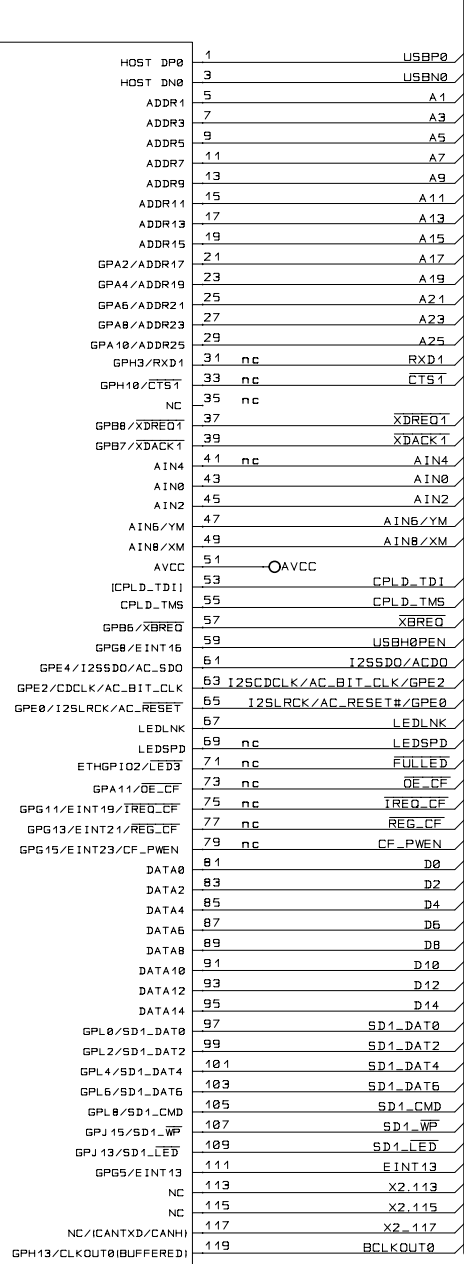
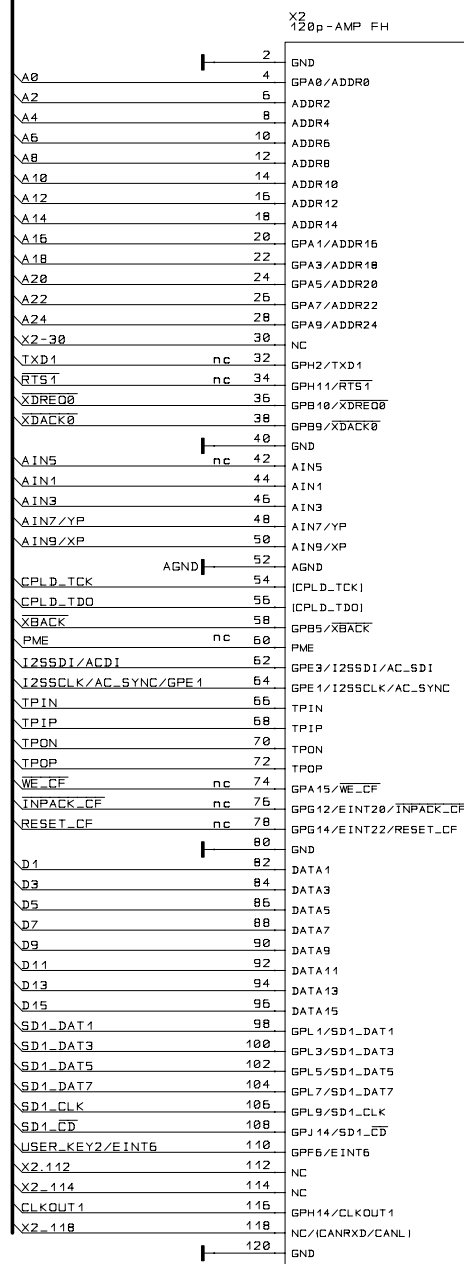
System Bus



Current measurements on +3.3V (module)

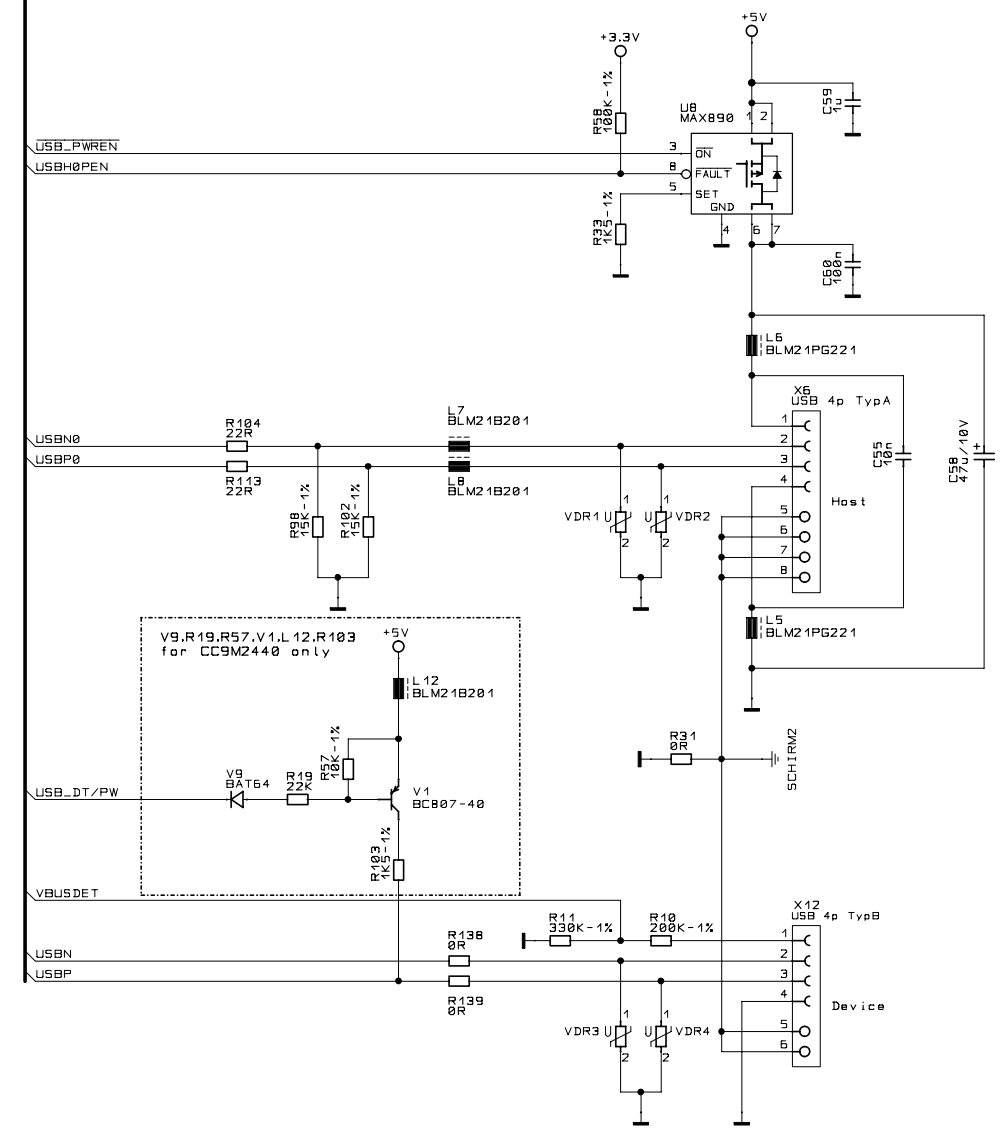
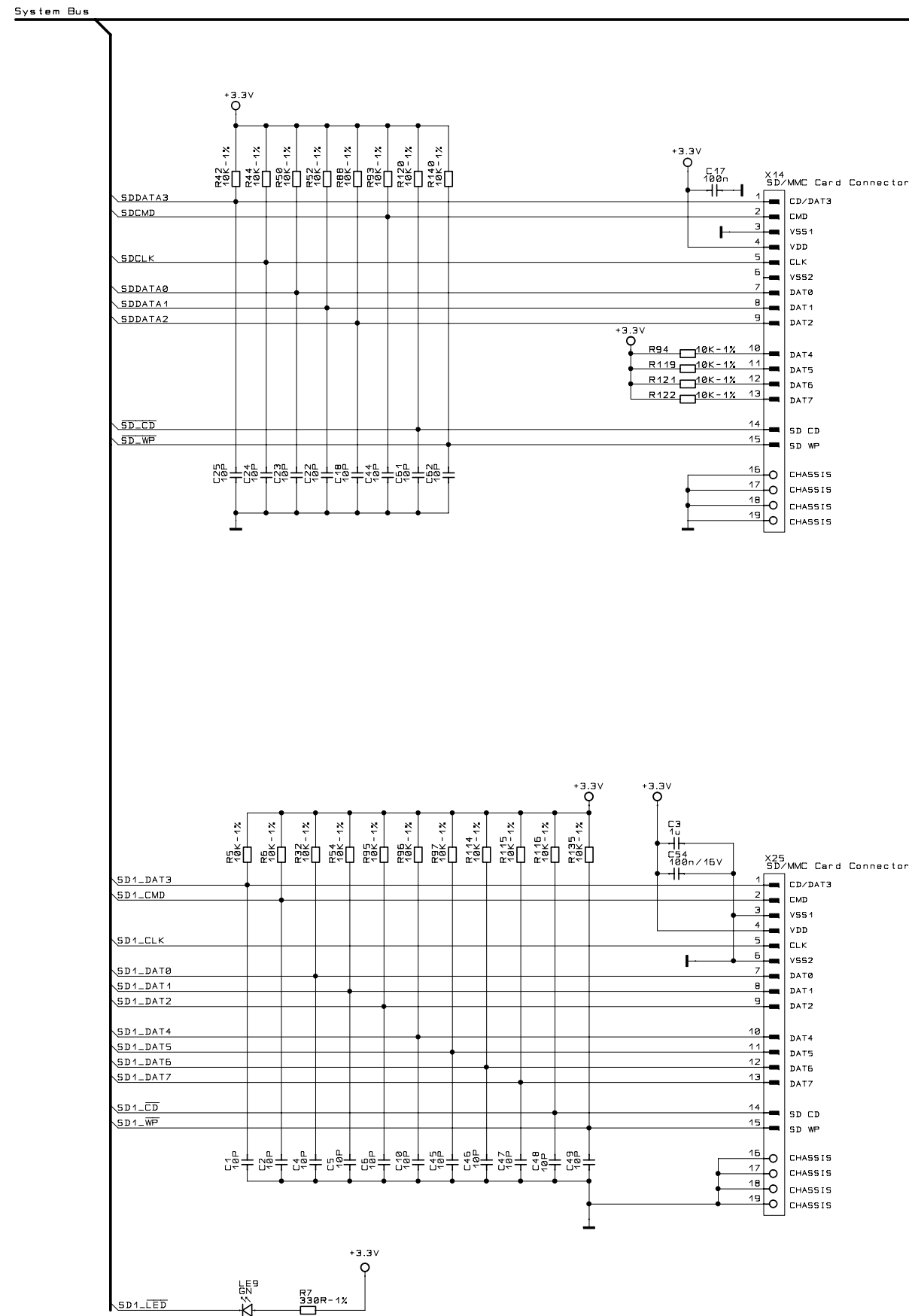
Current measurements on VLIO (module)

LCD\_PWREN has to be low active!  
(Switches Backlight Inverter of LCDAPKITJS)



Usable for:				Scale:		Filename: JSCC9M2443.scm	
				ConnectCore 9M 2443 Dev. Board			
				Note: This layout version is for reference only. Some parts may not be equipped or may have different values.			
		Date		Name		Title:	
		17.03.2009		Hp5		System Connectors	
		Designer		Approved		Partnumber:	
		ISO				30010071-02 Rev A	
		Rev.		Modification		Provided for:	
		82 Initial layout		17.03.2009 Hp5		Provided by:	
						Sheet 2 of 9	

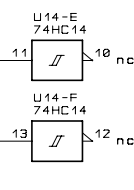
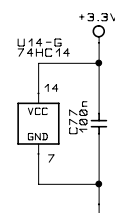
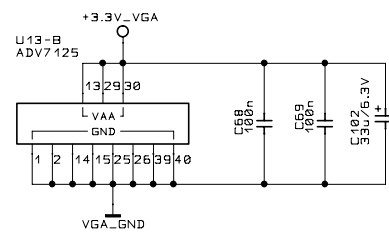
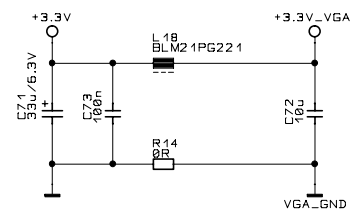
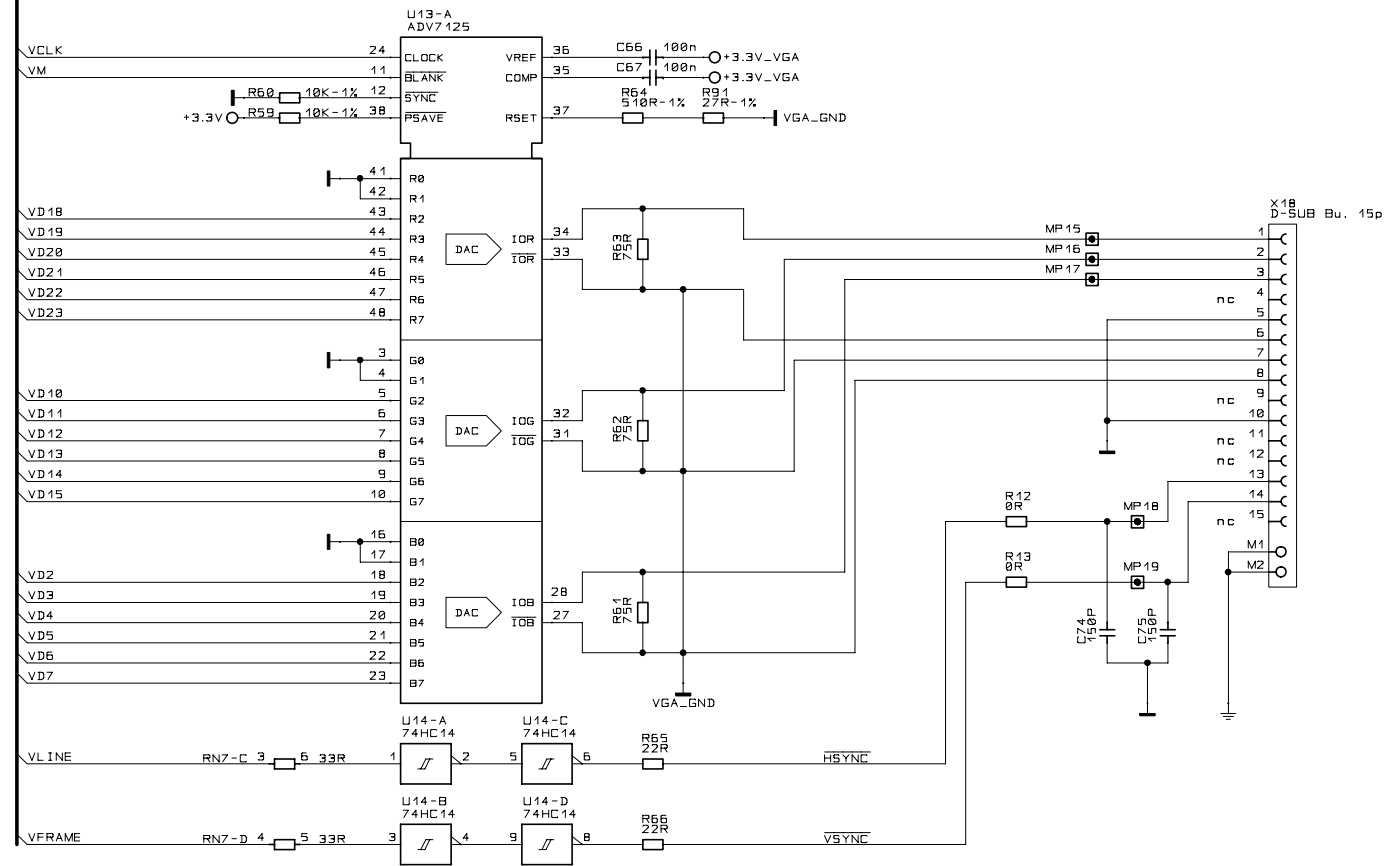




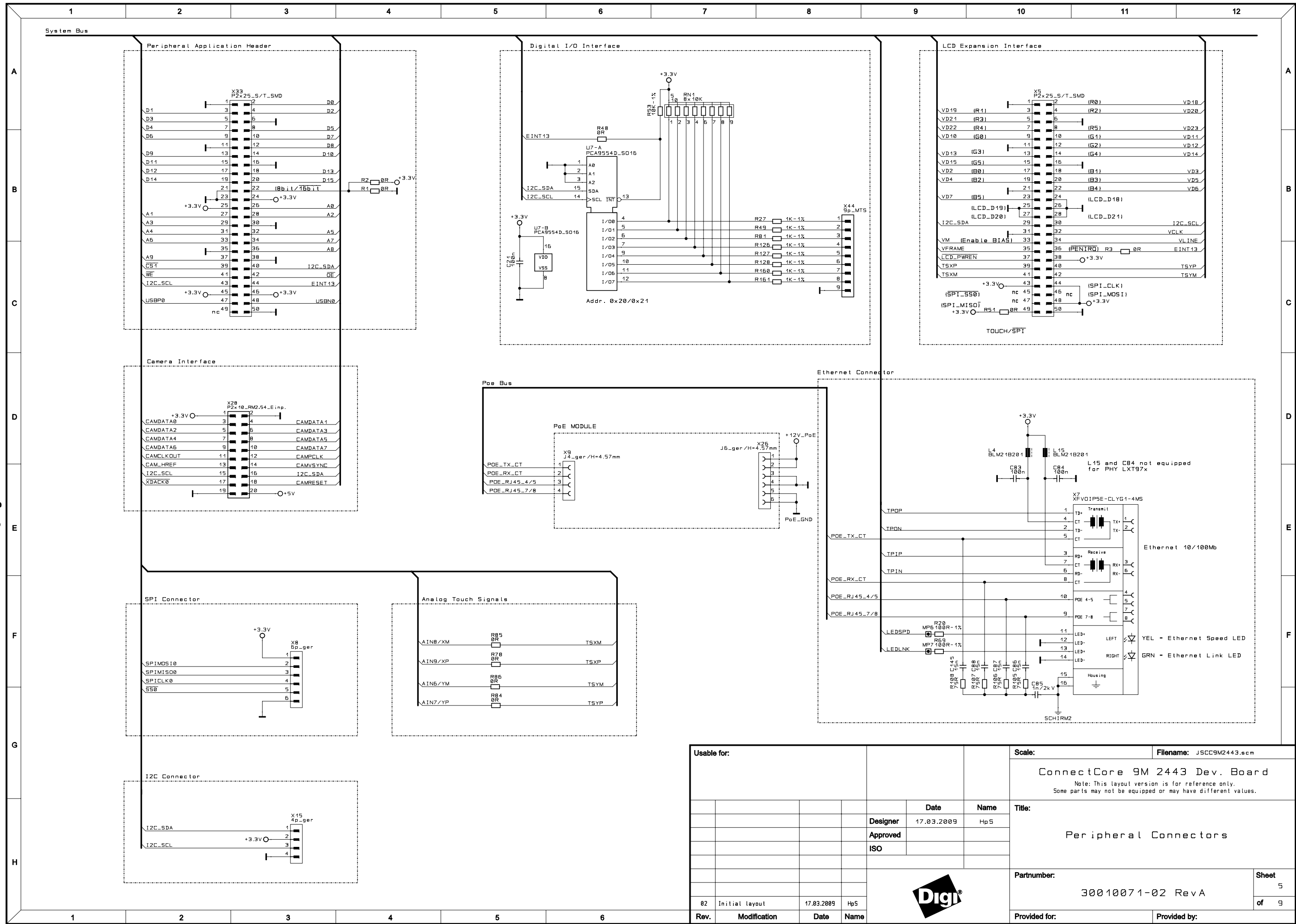
Usable for:				Scale:		Filename: JSCC9M2443.scm	
				ConnectCore 9M 2443 Dev. Board			
				Note: This layout version is for reference only. Some parts may not be equipped or may have different values.			
				Title:			
				USB, SD/MMC			
				Partnumber:		Sheet	
				30010071-02 Rev A		3	
				Provided for:		of	
						9	
Rev.	Modification	Date	Name				
02	Initial layout	17.03.2009	Hp5				



System Bus

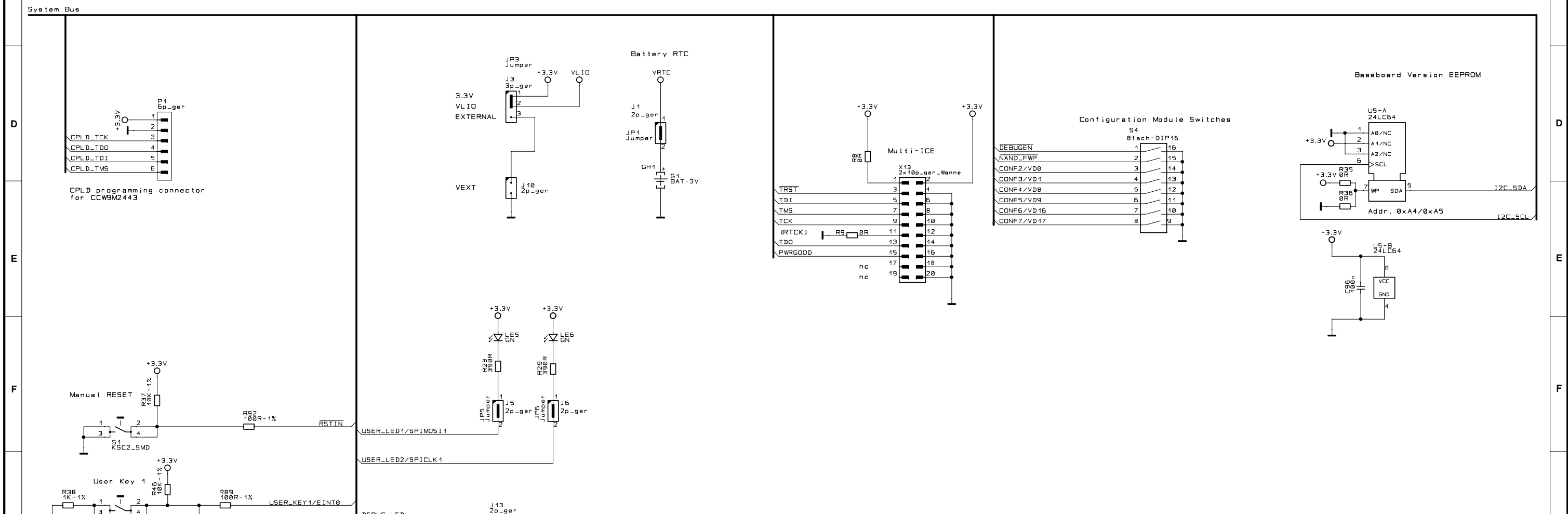
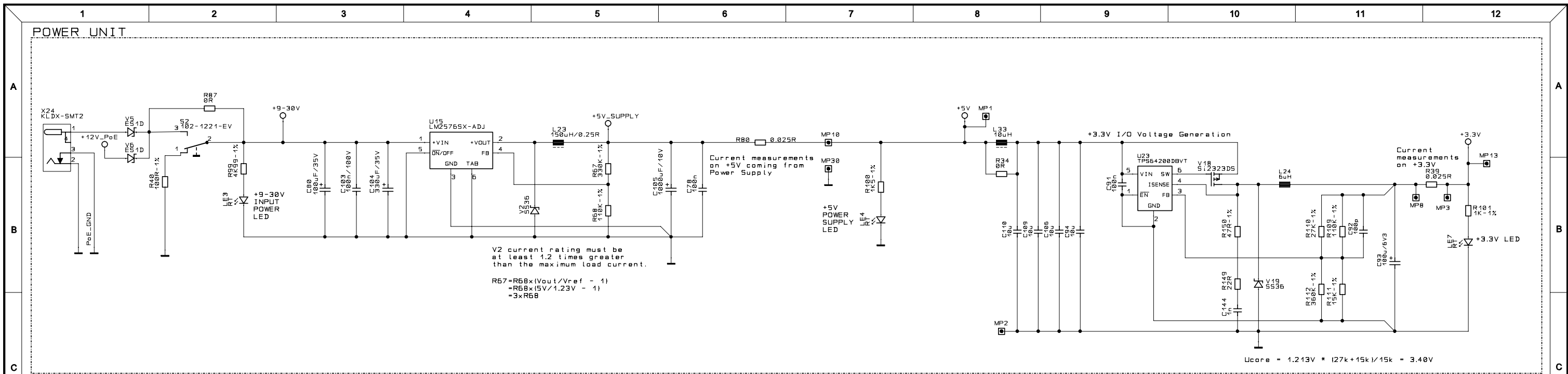


Usable for:				Scale:		Filename: JSCC9M2443.scm	
				ConnectCore 9M 2443 Dev. Board			
				<small>Note: This layout version is for reference only. Some parts may not be equipped or may have different values.</small>			
		Date		Name		Title:	
		17.03.2009		Hp5		VGA	
		ISO					
						Partnumber:	
						30010071-02 Rev A	
						Sheet	
						4	
						of	
						9	
Rev.	Modification	Date	Name	Provided for:		Provided by:	
02	Initial layout	17.03.2009	Hp5				



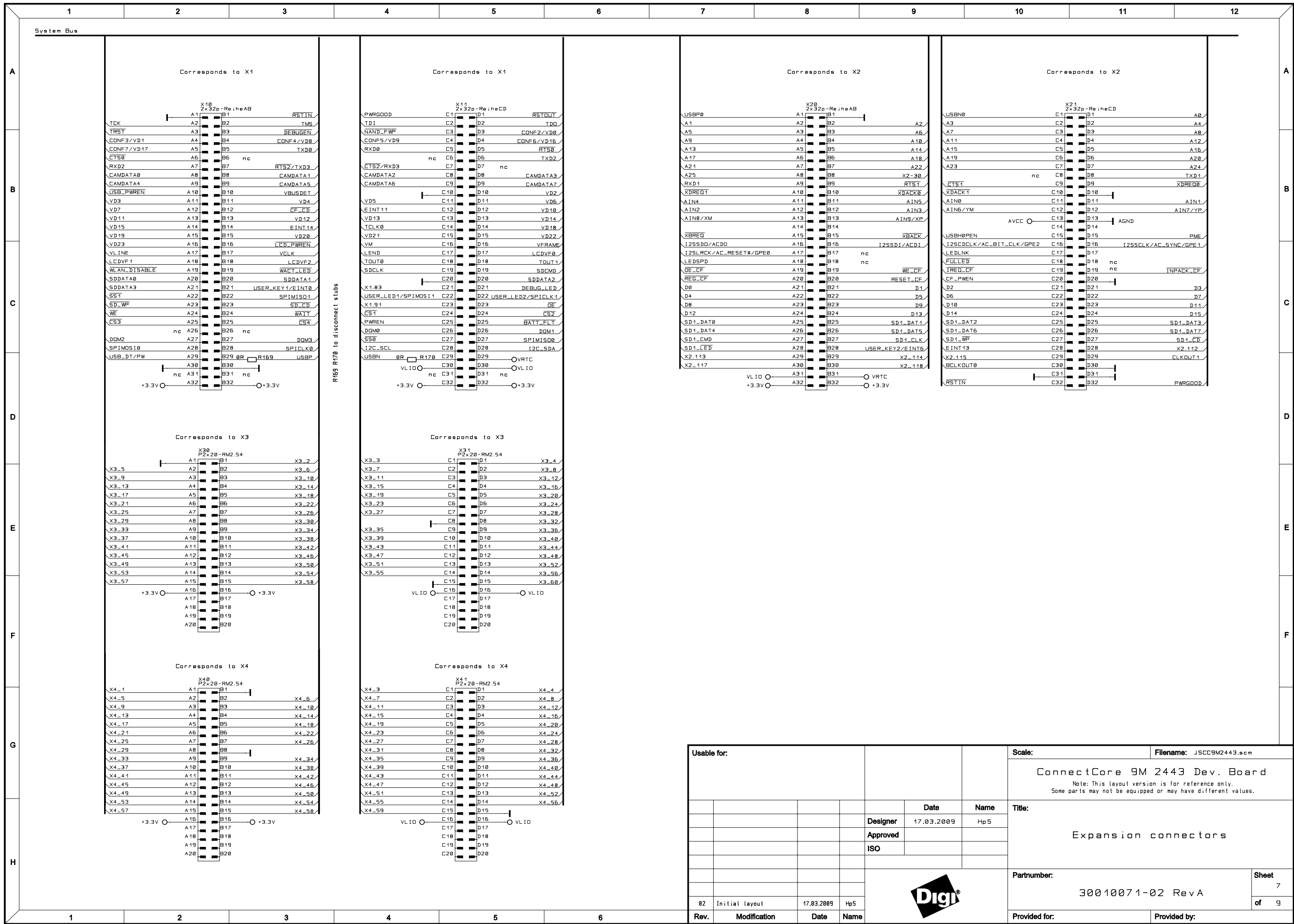
Usable for:				Scale:		Filename: JSCC9M2443.scm	
				<b>ConnectCore 9M 2443 Dev. Board</b> <small>Note: This layout version is for reference only. Some parts may not be equipped or may have different values.</small>			
				<b>Peripheral Connectors</b>			
				Partnumber:		Sheet	
				30010071-02 Rev A		5	
				Provided for:		of	
						9	
Rev.	Modification	Date	Name				
02	Initial layout	17.03.2009	Hp5				





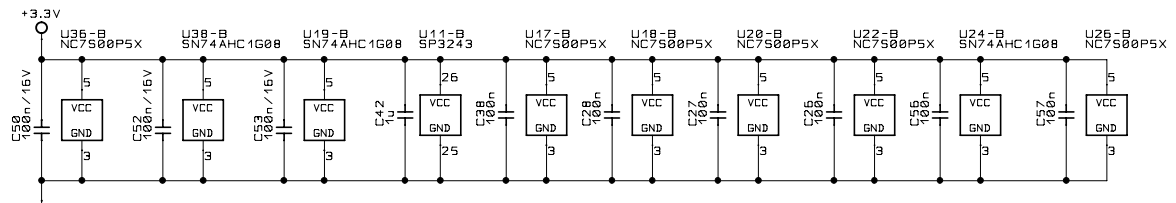
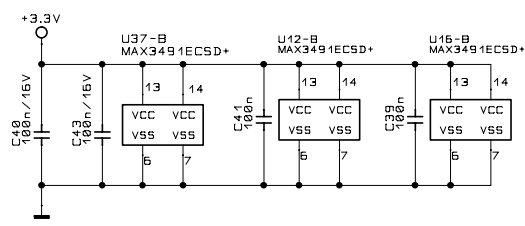
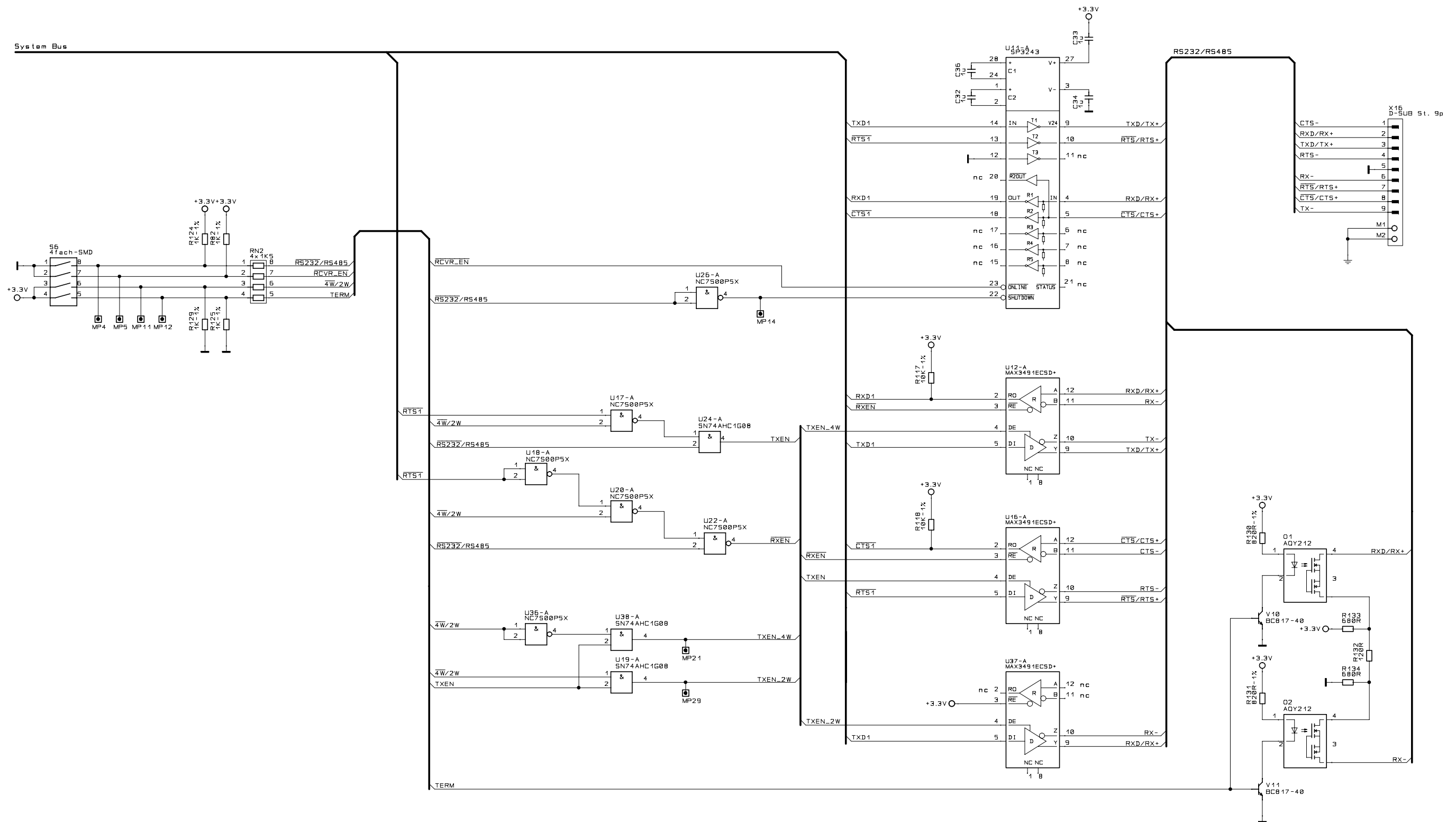
Usable for:		Scale:		Filename: JSCC9M2443.scm	
				ConnectCore 9M 2443 Dev. Board	
				Note: This layout version is for reference only. Some parts may not be equipped or may have different values.	
	Designer	Date	Name	Title:	
	Approved			Power, Reset, Configuration	
	ISO			Partnumber:	
				30010071-02 Rev A	
02	Initial layout	17.03.2009	Hp5	Sheet	6
Rev.	Modification	Date	Name	Provided for:	of 9
				Provided by:	





Usable for:		Scale:		Filename: JSCC9M2443.scm	
				ConnectCore 9M 2443 Dev. Board	
				Note: This layout version is for reference only. Some parts may not be equipped or may have different values.	
		Date		Title:	
		17.03.2009		Expansion connectors	
		Name		Partnumber:	
		Hp5		30010071-02 Rev A	
		Approved		Sheet	
		ISO		7	
				of 9	
Rev.		Modification		Date	
02		Initial layout		17.03.2009	
				Name	
				Hp5	
				Provided for:	
				Provided by:	

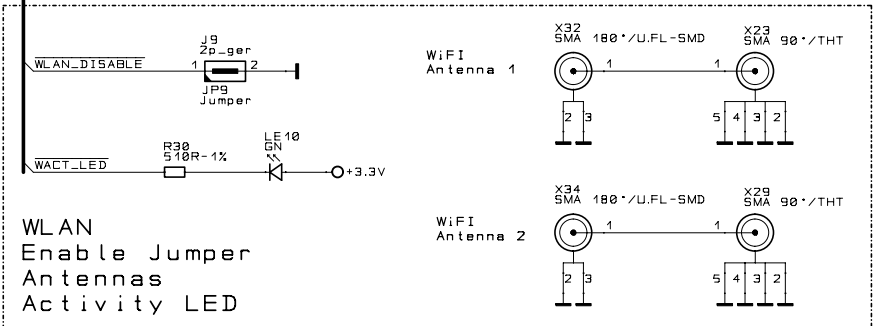
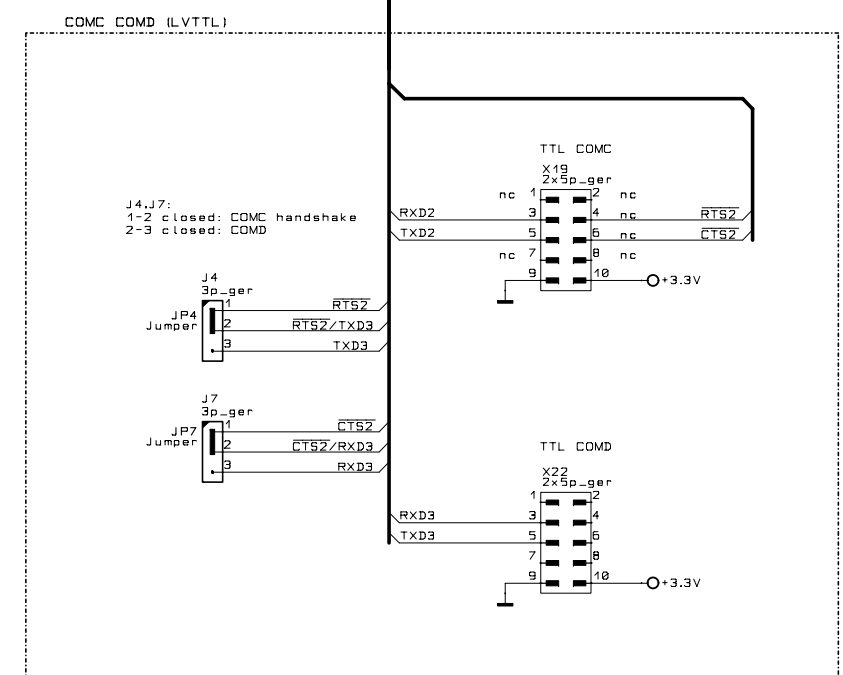
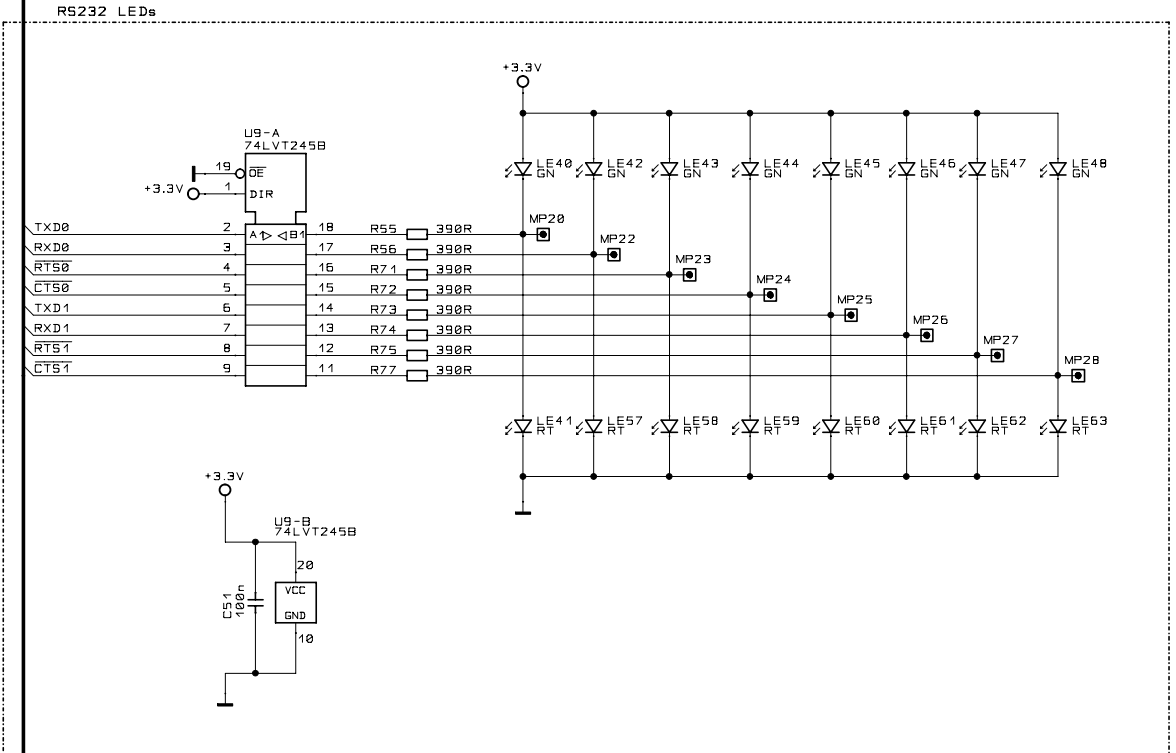
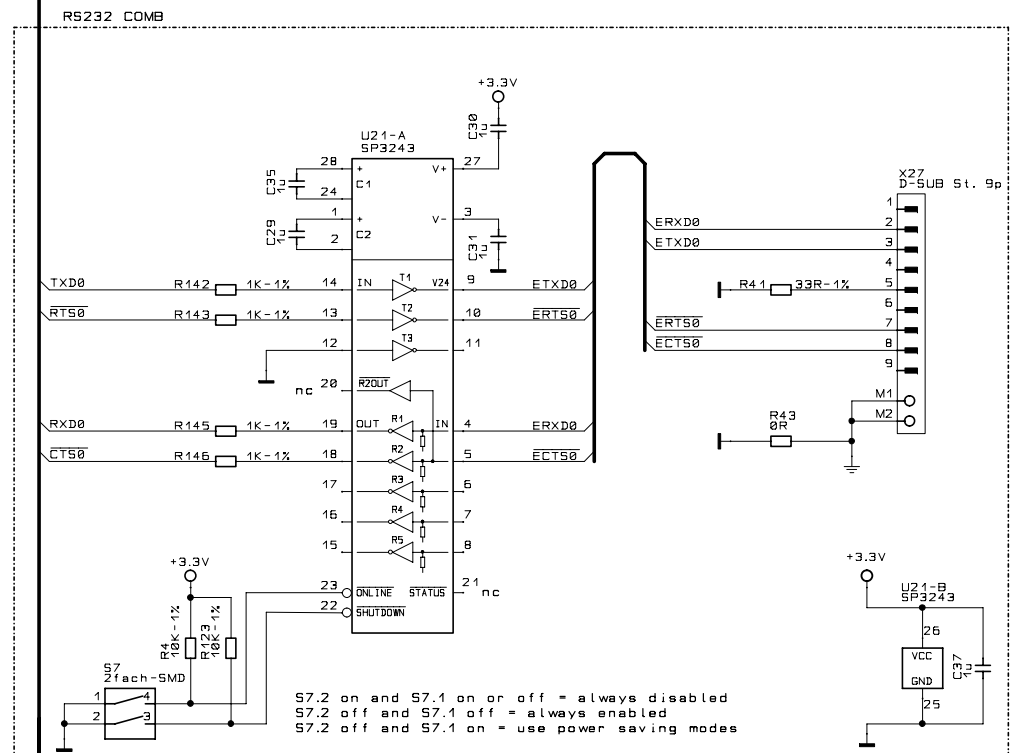




Usable for:				Scale:		Filename: JSCC9M2443.scm	
				<b>ConnectCore 9M 2443 Dev. Board</b> <small>Note: This layout version is for reference only. Some parts may not be equipped or may have different values.</small>			
				Title:		ME I	
				Partnumber:		30010071-02 Rev A	
				Sheet		8	
				of		9	
Rev.		Modification		Date		Name	
				17.03.2009		Hp5	
				Provided for:		Provided by:	



System Bus



Usable for:				Scale:		Filename: JSCC9M2443.scm	
				<b>ConnectCore 9M 2443 Dev. Board</b> <small>Note: This layout version is for reference only. Some parts may not be equipped or may have different values.</small>			
				Title:		Wireless, RS232	
				Partnumber:		30010071-02 Rev A	
				Sheet		9	
				of		9	
Rev.	Modification	Date	Name	Provided for:		Provided by:	
02	Initial layout	17.03.2009	Hp5				

