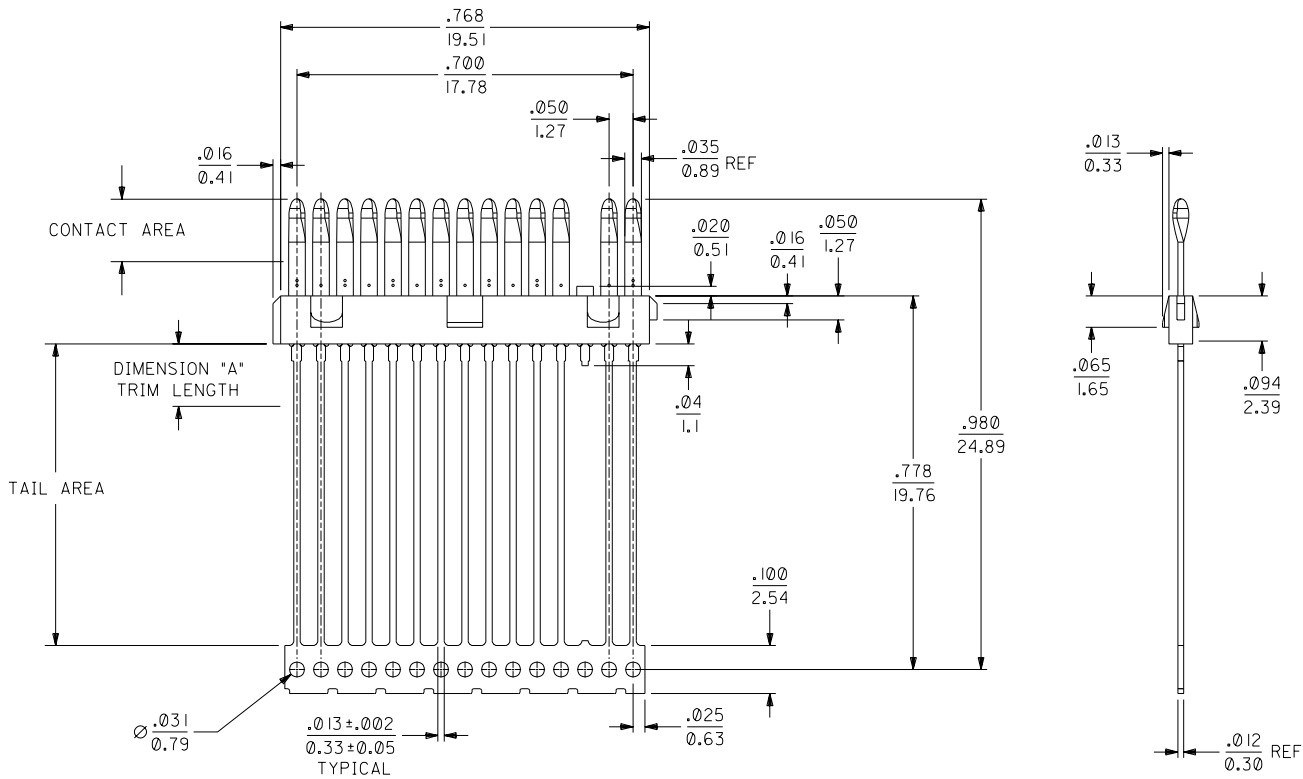


13	12	11	10	9	8	7	6	5	4	3	2	70984
ITEM NUMBER	CARRIER	TRIMMED	DIMENSION "A"	PLATING								
				CONTACT AREA				TAIL AREA				
70984-1098	YES	NO	N/A	GOLD FLASH OVER A NICKEL UNDERPLATE				.000100/(0.00254) MINIMUM TIN OVER A NICKEL UNDERPLATE				
70984-1099	NO	YES	.130±.010	GOLD FLASH OVER A NICKEL UNDERPLATE				.000100/(0.00254) MINIMUM TIN OVER A NICKEL UNDERPLATE				

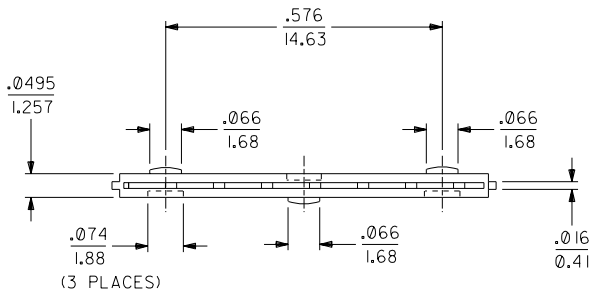


NOTES

- 1) MATERIALS:
 INSULATOR: GLASS FILLED LCP (LIQUID CRYSTAL POLYMER),
 UL 94V-0, COLOR: BLACK.
 TERMINAL: PHOSPHOR BRONZE, .012/0.30 THICK.
 PLATING: SEE CHART
- 2) FOR PART NUMBERS AND PLATING OPTIONS, SEE CHART.
- 3) PARTS CONFORM TO PRODUCT SPECIFICATION PS-75134-001.
- 4) PACKAGED PER SPECIFICATION PK-70873-0335 APPLIES.

NOTE FOR LEAD FREE CONVERSION:

THE PRIMARY SHIPPING CARTON WILL BE LABELED "COMPLIANT TO ROHS DIRECTIVE 2002/95/EC AND ELV ANNEX II OF DIRECTIVE 2000/53/EC". CARTONS WITHOUT THIS LABEL MAY CONTAIN PRODUCT WITH LEAD.



LEADFREE EC NO. UCP2004-1998 DRAWN: DMORGAN 04/04/14 CHK: BBARKER 04/04/14 APPR: SMILLER 04/04/14	DESCRIPTION MAJOR CRITICAL	QUALITY SYMBOLS	GENERAL TOLERANCES: (UNLESS SPECIFIED)	SCALE 5:1	DESIGN UNITS <input type="checkbox"/> mm <input checked="" type="checkbox"/> INCH	DIMENSIONS: <input type="checkbox"/> mm <input checked="" type="checkbox"/> INCH <input type="checkbox"/> mm ONLY	SHT	REV
		4 PLACES ±0. ±.	mm	INCH	DRAWN BY & DATE DMORGAN 02/10/17	TITLE: SALES 14 CKT DMS-59 PLUG INSERT MOLDED CONTACT ASSEMBLY DETAIL		
		3 PLACES ±0. ±.010			CHECKED BY & DATE BBARKER 02/10/17	MATERIAL NO. SEE CHART		
		2 PLACES ±0.25 ±.015			APPROVED BY & DATE SMILLER 02/10/17	DRAWING NO. SD-70984-100		
1 PLACE ±0.38 ±.			ANGULAR: ±1/2 °	CAD FILENAME		SHEET NO. 1 OF 1		
REV		DRAFT WHERE APPLICABLE MUST REMAIN WITHIN DIMENSIONS		THIS DRAWING CONTAINS INFORMATION THAT IS PROPRIETARY TO MOLEX INCORPORATED AND SHOULD NOT BE USED WITHOUT WRITTEN PERMISSION.				SIZE C