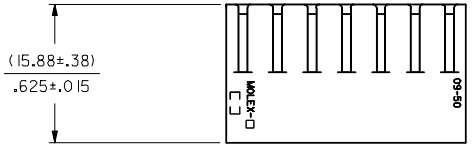


TERMINAL SHOWN FOR REF. ONLY

(1.14)±.045 SQ. OR ROUND PIN IS STANDARD. HOUSING WILL ACCEPT PIN SIZES FROM (.51)±.020 TO (1.57)±.062



OPT. CODE	RAMP	POL. RIB	EARS	MATERIAL	ENGRAVING	PACKAGING
A	STD. RAMP	NO	NO	NYLON 94V-2	STD.	PK-2139-001
C	NONE	NO	NO	NYLON 94V-2	STD.	PK-2139-002
G	WIDE RAMP	NO	NO	NYLON 94V-2	STD.	PK-2139-001
M	STD. RAMP	NO	NO	NYLON 6 94V-2	STD.	TBD-INDIA
N	NONE	NO	NO	NYLON 6 94V-2	STD.	TBD-INDIA
P	STD. RAMP	YES	NO	NYLON 94V-2	STD.	TBD SINGAPORE

NO. OF CKT'S. 2 139-N \*\*\* - \*\*\* - \*\*\*

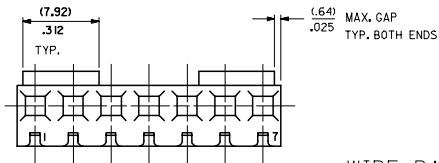
SELECTIVE RAMP LOC.  
 BLANK=NONE  
 AA=1ST. SEL. LOC.  
 AB=2ND. SEL. LOC., ETC.  
 VOID CODE  
 NO. CORRESPONDS TO CKT. NO. VOIDED.  
 MULT. VOIDS START WITH 51.  
 COLOR CODE  
 BLANK=NATURAL  
 GN=GREEN  
 YW=YELLOW  
 RD=RED  
 OR=ORNANGE  
 BU=BLUE  
 BK=BLACK

- NOTES:
1. MATERIAL: SEE LEGEND.
  2. FINISH: N/A
  3. PARTS CONFORM TO PRODUCT SPECIFICATION PS-08-50.
  4. PACKAGING INFORMATION: SEE LEGEND
  5. THIS HOUSING FOR USE WITH TERMINAL, NO. 2478 (18 TO 24 GA) & 2578 (22 TO 26 GA), WITH (2.54)±.100 MAX. INSULATION DIA. HOUSING 41695 IS RECOMMENDED FOR OVER (2.54)±.100 DIA. INSULATION.
  6. DIMENSIONS GIVEN ACROSS CENTERLINES ARE SYMMETRICAL ABOUT THOSE CENTERLINES WITHIN HALF THE TOTAL TOLERANCE.
  7. FIRST CKT. NO. ON 1 THRU 5 CKT. HOUSINGS, FIRST AND LAST CKT. NO. ON 6 CKT HOUSING AND LARGER.
  8. MAX BOW .005 MM/MM OR .005 IN/IN
  9. 2139-NP-\* IS MANUFACTURED IN SINGAPORE ONLY.

DIM. A	DIM. B	NO. OF
(7.82)	(3.96±.13)	2
.308	.156±.005	
(11.79)	(7.92±.13)	3
.464	.312±.005	
(15.75)	(11.89±.13)	4
.620	.468±.005	
(19.71)	(15.85±.13)	5
.776	.624±.005	
(23.67)	(19.81±.13)	6
.932	.780±.005	
(27.64)	(23.77±.13)	7
1.088	.936±.005	
(31.60)	(27.74±.25)	8
1.244	1.092±.010	
(35.56)	(31.70±.25)	9
1.400	1.248±.010	
(39.52)	(35.66±.25)	10
1.556	1.404±.010	
(43.48)	(39.62±.25)	11
1.712	1.560±.010	
(47.45)	(43.59±.25)	12
1.868	1.716±.010	
(51.41)	(47.55±.31)	13
2.024	1.872±.012	
(55.37)	(51.51±.36)	14
2.180	2.028±.014	
(59.33)	(55.47±.36)	15
2.336	2.184±.014	
(63.30)	(59.44±.36)	16
2.492	2.340±.014	
(67.26)	(63.40±.36)	17
2.648	2.496±.014	
(71.22)	(67.36±.36)	18
2.804	2.652±.014	
(75.18)	(71.32±.36)	19
2.960	2.808±.014	
(79.15)	(75.29±.36)	20
3.116	2.964±.014	
(83.11)	(79.25±.46)	21
3.272	3.120±.018	
(87.07)	(83.21±.46)	22
3.428	3.276±.018	
(91.03)	(87.17±.46)	23
3.584	3.432±.018	
(95.00)	(91.14±.46)	24
3.740	3.588±.018	

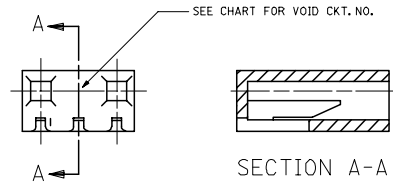
UPDATE PER ECN ECN NO: UCP2006-0451 2005/11/09 DRAWN: JUNE 2005/12/12 CHECKED: JUNE 2005/12/12 APPROVED: JUNE 2005/12/12 APPROVED: JUNE 2005/12/12	QUALITY SYMBOLS ▽=0 ▽=0	GENERAL TOLERANCES (UNLESS SPECIFIED) mm INCH 2 PLACES ±.010 ±.010 3 PLACES ±.025 ±.014 2 PLACES ±0.36 ±.010 1 PLACE ±0.36 ±.010 ANGULAR ±1/2°	DIMENSION STYLE MM/IN DRAWN BY DATE SAMIEC 1986/01/17 CHECKED BY DATE PATEL 1986/01/17 APPROVED BY DATE LENZ 1986/01/07	SCALE --- DESIGN UNITS INCH THIRD ANGLE PROJECTION	TITLE CONNECTOR HOUSING .156 CL CRIMP TERMINAL 2139 SERIES DWG. MOLEX INCORPORATED
		DRAFT WHERE APPLICABLE MUST REMAIN WITHIN DIMENSIONS	MATERIAL NO. SEE CHART	DOCUMENT NO. SD-2139	SHEET NO. 1 OF 4
		THIS DRAWING CONTAINS INFORMATION THAT IS PROPRIETARY TO MOLEX INCORPORATED AND SHOULD NOT BE USED WITHOUT WRITTEN PERMISSION			
		SIZE D			

4	AET
3	AET
2	AET
1	AET

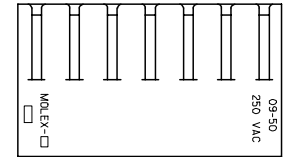


WIDE RAMP OPTION

NOTE: RAMPS ARE LOCATED ONLY AT ENDS OF HOUSING. THIS OPTION FOR 6 CKT. HOUSING AND LARGER.

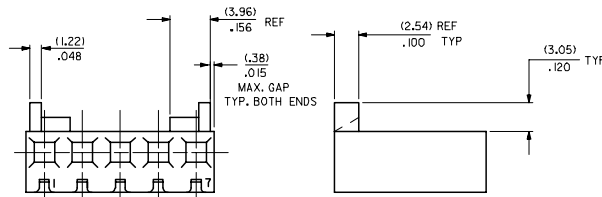
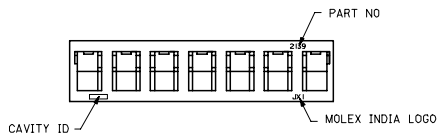


MOLDED VOID OPTION



ENGRAVED VOLTAGE RATING OPTION (NOT AVAILABLE ON 1 CKT. HOUSINGS)

OPTIONAL ENGRAVING LOCATION (MOLEX INDIA ONLY)



POLARIZING RIB OPTION WITH STD. RAMP

<b>UPDATE TITLE BLOCK</b> DEC NO: UCP2006-0451 DRAWN: JUNE 2005/17/09 CHECKED: APRIL 2005/17/12 APPROVED: APRIL 2005/17/14 REV DESCRIPTION	QUALITY SYMBOLS	GENERAL TOLERANCES (UNLESS SPECIFIED)	DIMENSION STYLE	SCALE	DESIGN UNITS	THIRD ANGLE PROJECTION																		
	$\nabla=0$ $\nabla=0$	<table border="1"> <tr> <th></th> <th>mm</th> <th>INCH</th> </tr> <tr> <td>4 PLACES</td> <td>± .005</td> <td>± .0004</td> </tr> <tr> <td>3 PLACES</td> <td>± .010</td> <td>± .0008</td> </tr> <tr> <td>2 PLACES</td> <td>± 0.25</td> <td>± .014</td> </tr> <tr> <td>1 PLACE</td> <td>± 0.36</td> <td>± .014</td> </tr> <tr> <td colspan="2">ANGULAR</td> <td>± 1/2°</td> </tr> </table>		mm	INCH	4 PLACES	± .005	± .0004	3 PLACES	± .010	± .0008	2 PLACES	± 0.25	± .014	1 PLACE	± 0.36	± .014	ANGULAR		± 1/2°	MM/IN	---	INCH	
		mm	INCH																					
	4 PLACES	± .005	± .0004																					
3 PLACES	± .010	± .0008																						
2 PLACES	± 0.25	± .014																						
1 PLACE	± 0.36	± .014																						
ANGULAR		± 1/2°																						
			DRAWN BY DATE	CHECKED BY DATE	TITLE																			
			SAMIEC 1986/01/17	PATEL 1986/01/17	CONNECTOR HOUSING .156 CL CRIMP TERMINAL 2139 SERIES DWG.																			
			APPROVED BY DATE	MATERIAL NO. DOCUMENT NO. SHEET NO.																				
			LENZ 1986/01/17	SD-2139 3 OF 4																				
			DRAFT WHERE APPLICABLE MUST REMAIN WITHIN DIMENSIONS SEE CHARTS THIS DRAWING CONTAINS INFORMATION THAT IS PROPRIETARY TO MOLEX INCORPORATED AND SHOULD NOT BE USED WITHOUT WRITTEN PERMISSION																					

2139-NG--AA			2139-NM-*			2139-NN-*			2139-NP-*								
ORDER NO.	ENG. NO.	VOIDS	ORDER NO.	ENG. NO.	VOIDS	ORDER NO.	ENG. NO.	VOIDS	ORDER NO.	ENG. NO.	VOIDS	ORDER NO.	ENG. NO.	VOIDS	ORDER NO.	ENG. NO.	VOIDS
	2139-2G-AA		09-50-2020	2139-2M		09-50-2021	2139-2N		09-50-2022	2139-2P							
	2139-3G-AA		09-50-2030	2139-3M		09-50-2031	2139-3N		09-50-2032	2139-3P							
	2139-4G-AA		09-50-2040	2139-4M		09-50-2041	2139-4N		09-50-2042	2139-4P							
	2139-5G-AA		09-50-2050	2139-5M		09-50-2051	2139-5N		09-50-2052	2139-5P							
	2139-6G-AA		09-50-2060	2139-6M		09-50-2061	2139-6N		09-50-2062	2139-6P							
09-50-3074	2139-7G-AA		09-50-2070	2139-7M		09-50-2071	2139-7N		09-50-2072	2139-7P							
	2139-8G-AA		09-50-2080	2139-8M		09-50-2081	2139-8N		09-50-2082	2139-8P							
09-50-3094	2139-9G-AA		09-50-2090	2139-9M		09-50-2091	2139-9N		09-50-2092	2139-9P							
	2139-10G-AA		09-50-2100	2139-10M		09-50-2101	2139-10N		09-50-2102	2139-10P							
	2139-11G-AA		09-50-2110	2139-11M		09-50-2111	2139-11N		09-50-2112	2139-11P							
09-50-3124	2139-12G-AA		09-50-2120	2139-12M		09-50-2121	2139-12N		09-50-2122	2139-12P							
	2139-13G-AA		09-50-2130	2139-13M		09-50-2131	2139-13N		09-50-2132	2139-13P							
	2139-14G-AA		09-50-2140	2139-14M		09-50-2141	2139-14N		09-50-2142	2139-14P							
	2139-15G-AA		09-50-2150	2139-15M		09-50-2151	2139-15N		09-50-2152	2139-15P							
	2139-16G-AA		09-50-2160	2139-16M		09-50-2161	2139-16N		09-50-2162	2139-16P							
09-50-3174	2139-17G-AA		09-50-2170	2139-17M		09-50-2171	2139-17N		09-50-2172	2139-17P							
	2139-18G-AA		09-50-2180	2139-18M		09-50-2181	2139-18N		09-50-2182	2139-18P							
	2139-19G-AA		09-50-2190	2139-19M		09-50-2191	2139-19N		09-50-2192	2139-19P							
	2139-20G-AA		09-50-2200	2139-20M		09-50-2201	2139-20N		09-50-2202	2139-20P							
	2139-21G-AA		09-50-2210	2139-21M		09-50-2211	2139-21N		09-50-2212	2139-21P							
	2139-22G-AA		09-50-2220	2139-22M		09-50-2221	2139-22N		09-50-2222	2139-22P							
	2139-23G-AA		09-50-2230	2139-23M		09-50-2231	2139-23N		09-50-2232	2139-23P							
	2139-24G-AA		09-50-2240	2139-24M		09-50-2241	2139-24N		09-50-2242	2139-24P							
				2139-25M													

<b>UPDATE TITLE BLOCK</b> EC NO: UCP2006-0451 DRAWN: JUNE 2005/17/09 CHECKED: APR 2005/17/12 APPROVED: APR 2005/17/14 AFI	QUALITY SYMBOLS ▽=0 ▽=0	GENERAL TOLERANCES (UNLESS SPECIFIED) <table border="1"> <tr> <th></th> <th>mm</th> <th>INCH</th> </tr> <tr> <td>4 PLACES</td> <td>± .005</td> <td>± .0005</td> </tr> <tr> <td>3 PLACES</td> <td>± .005</td> <td>± .0005</td> </tr> <tr> <td>2 PLACES</td> <td>± .005</td> <td>± .0005</td> </tr> <tr> <td>1 PLACE</td> <td>± .005</td> <td>± .0005</td> </tr> </table>		mm	INCH	4 PLACES	± .005	± .0005	3 PLACES	± .005	± .0005	2 PLACES	± .005	± .0005	1 PLACE	± .005	± .0005	DIMENSION STYLE <b>MM/IN</b>	SCALE ---	DESIGN UNITS <b>INCH</b>	THIRD ANGLE PROJECTION
		mm	INCH																		
	4 PLACES	± .005	± .0005																		
	3 PLACES	± .005	± .0005																		
2 PLACES	± .005	± .0005																			
1 PLACE	± .005	± .0005																			
DRAFT WHERE APPLICABLE MUST REMAIN WITHIN DIMENSIONS	MATERIAL NO. <b>SEE CHART</b>	DRAWN BY SAMIEC DATE 1986/01/17	CHECKED BY PATEL DATE 1986/01/17	APPROVED BY LENZ DATE 1986/01/17	TITLE <b>CONNECTOR HOUSING          .156 CENTER CRIMP TERM.          2139 SERIES DWG.</b>	MOLEX INCORPORATED															
	SIZE <b>D</b>	DOCUMENT NO. <b>SD-2139</b>	THIS DRAWING CONTAINS INFORMATION THAT IS PROPRIETARY TO MOLEX INCORPORATED AND SHOULD NOT BE USED WITHOUT WRITTEN PERMISSION			SHEET NO. <b>4 OF 4</b>															